

 INSTALLATION GUIDE

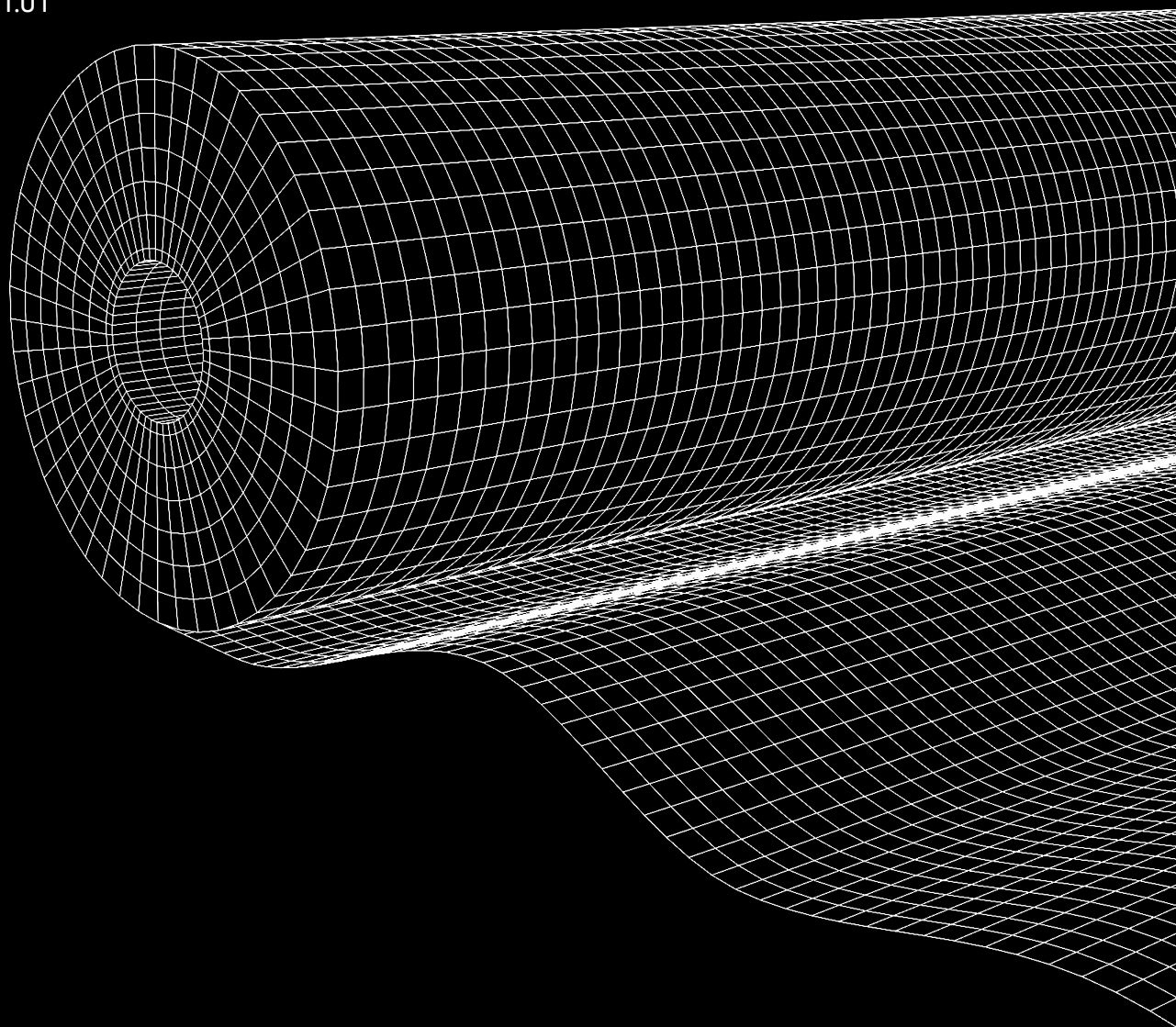
OBEX  **CORTEX^{FR}**

0160FR

Self-Adhesive DPC Membrane

Class B

Version 01.01.01



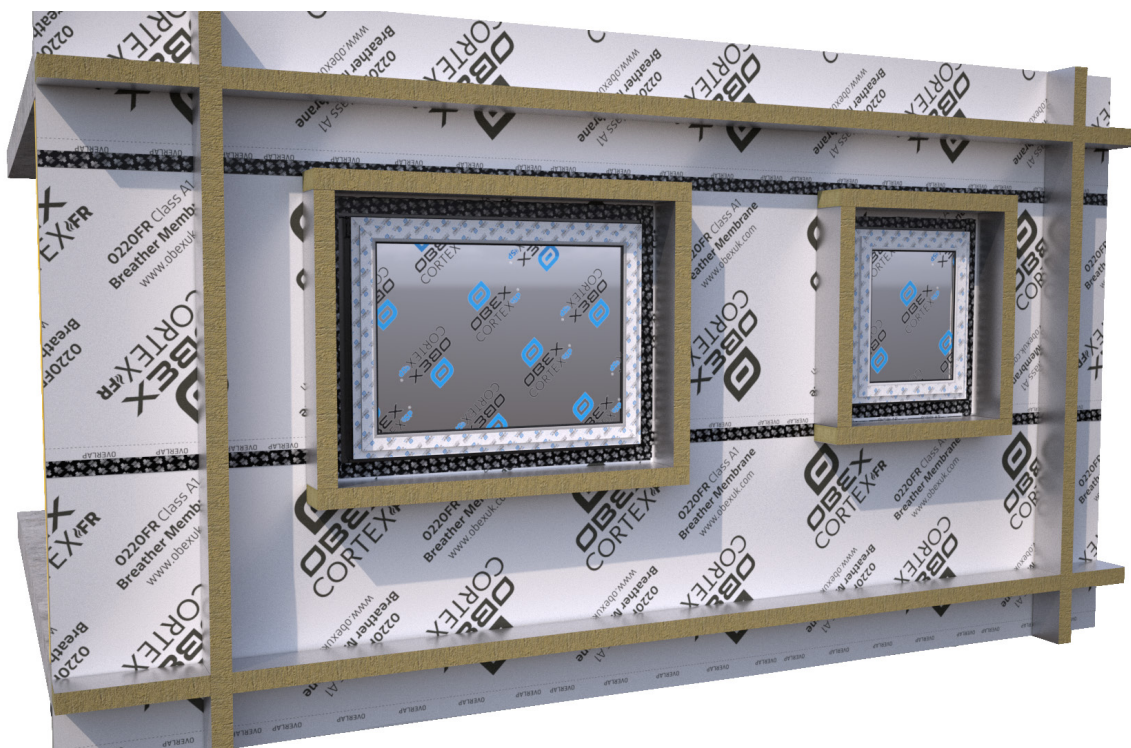
 **OBEX[®]**

Contents

Standard Installation03

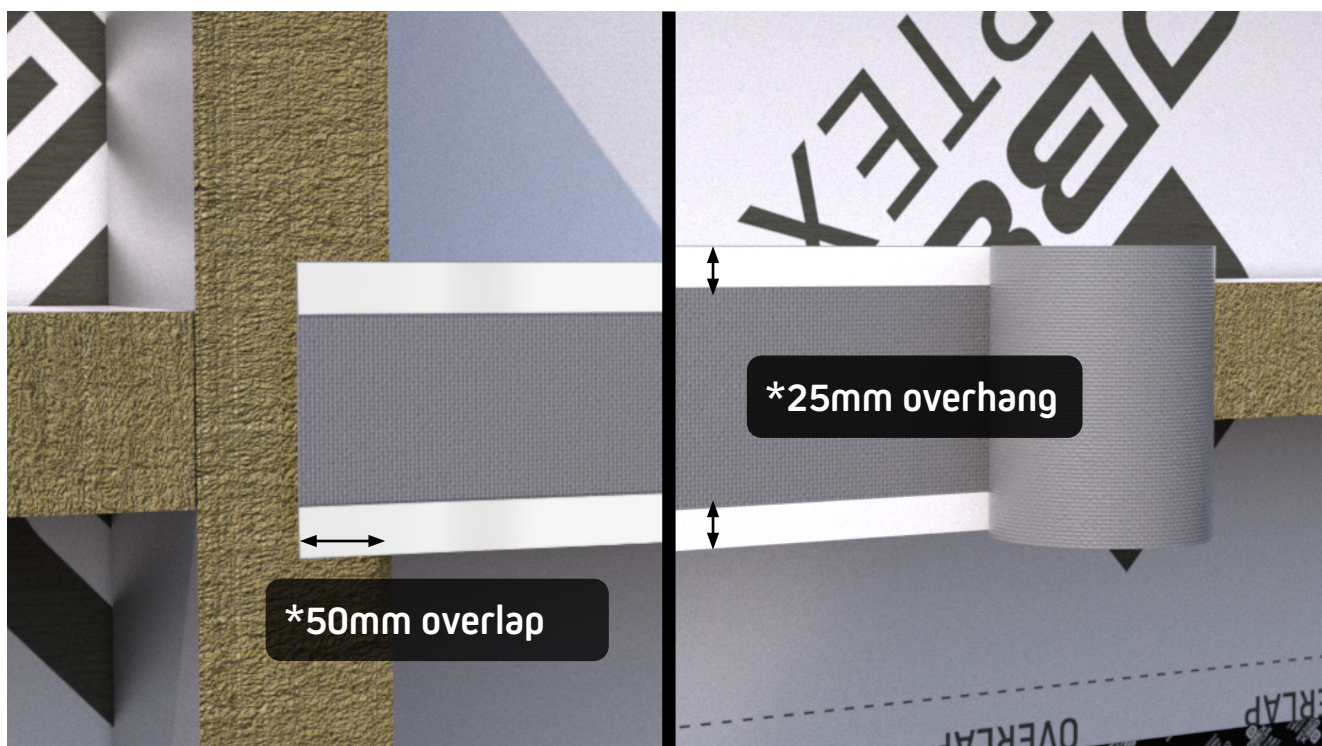
Important Notes

- » Firmly roll the membrane to ensure the adhesive strips bond to the cavity barriers.
- » The rolls may invariably contain joins. These should be overlapped and bonded by a minimum of 50mm.
- » Horizontal membranes must lap under vertical membranes by a minimum of 50mm.
- » Make sure the membrane folds over the sides of the cavity barrier by 25mm on both sides.



1

Install cavity barriers as per manufacturers instructions.



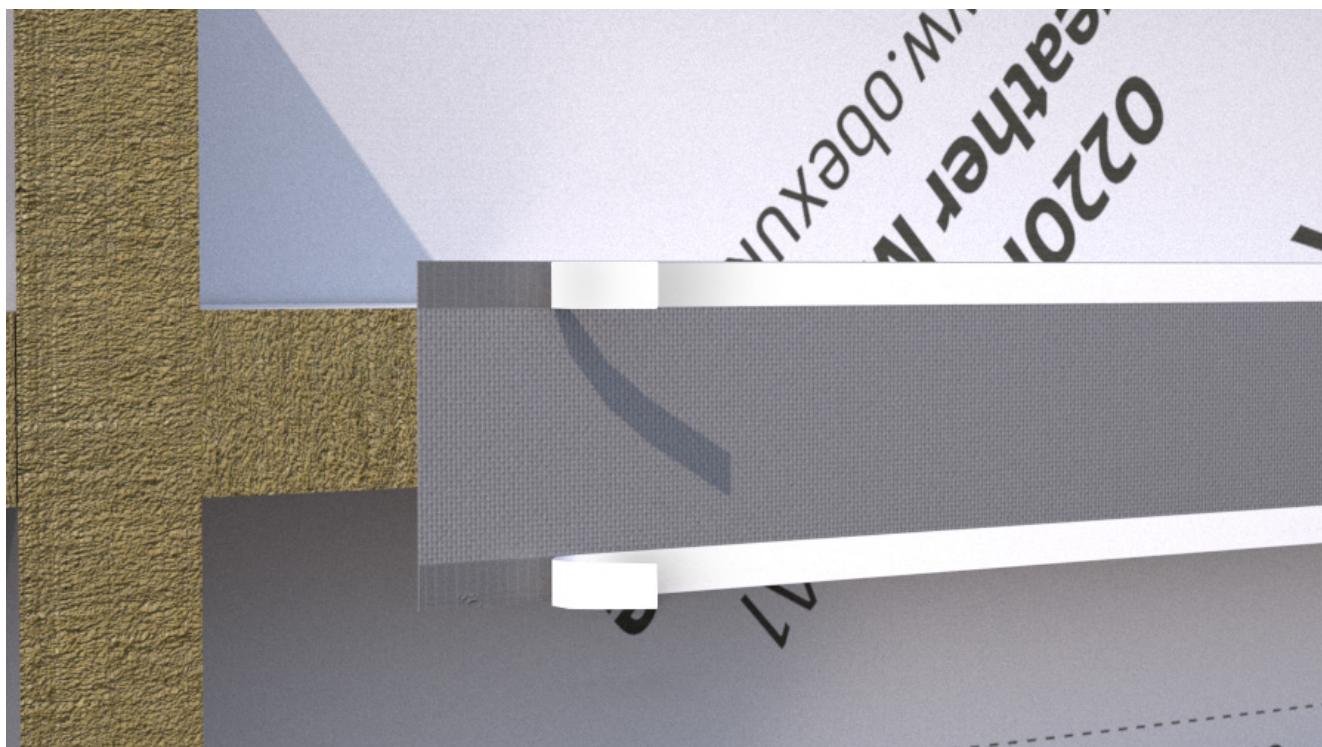
2

Roll out a length of OBEX CORTEX 0160FR Self Adhesive DPC Membrane, ensuring the membrane overlaps the vertical cavity barrier by at least 50mm, also make sure the roll is wide enough to overhang the barrier by 25mm on both side.



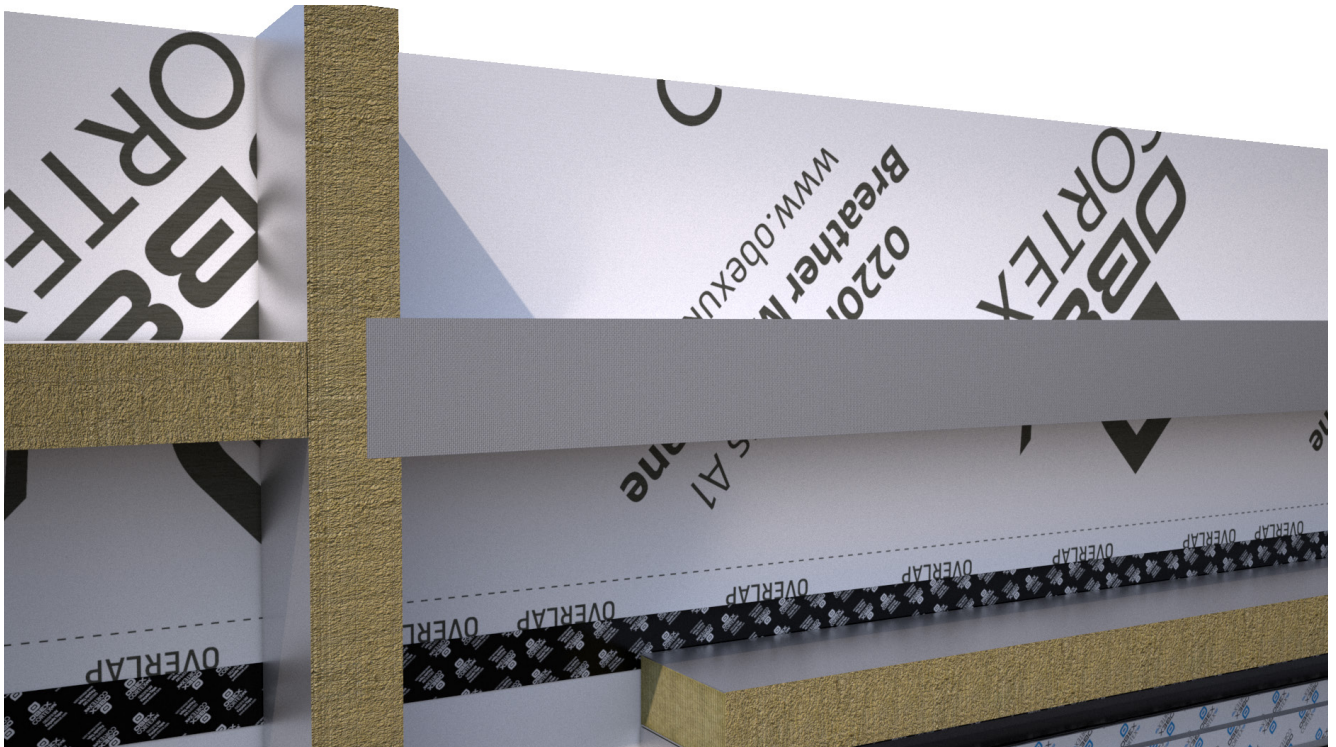
3

Cut the membrane to length with membrane shears.



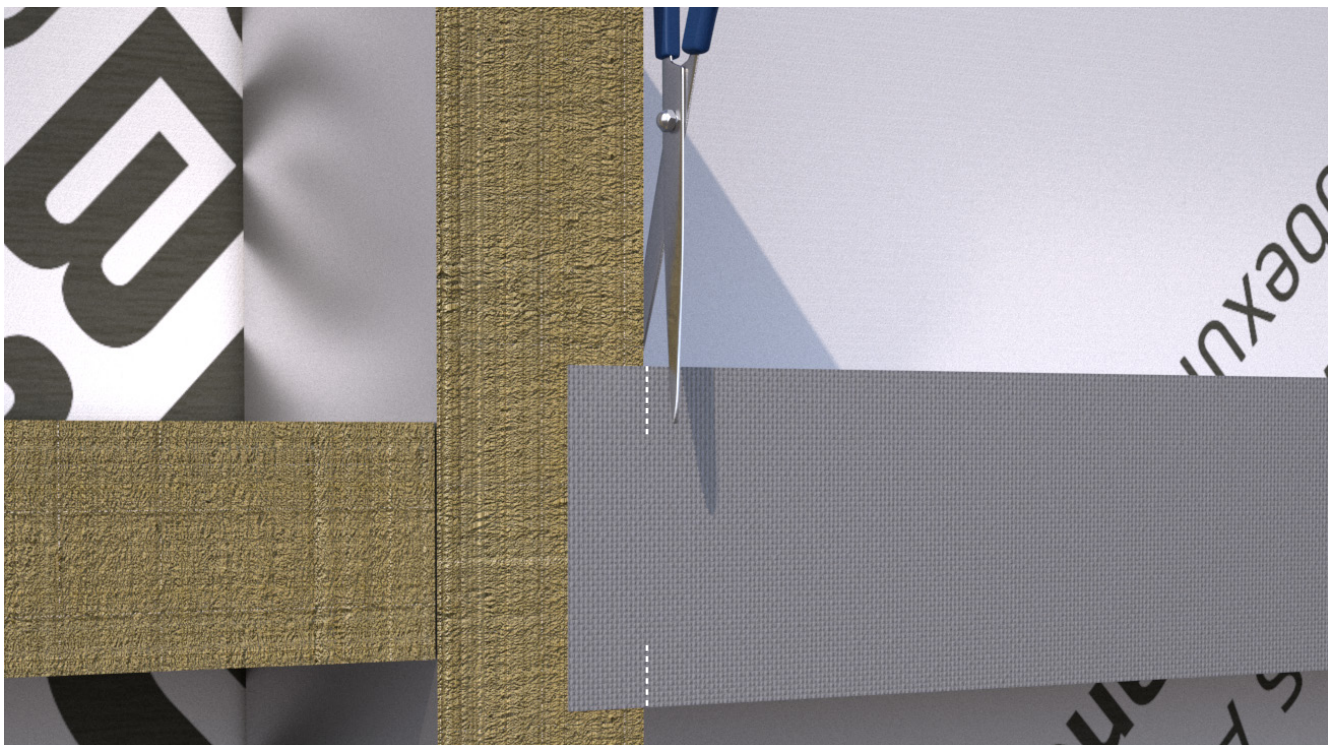
4

Peel off the release liner from the adhesive strips.



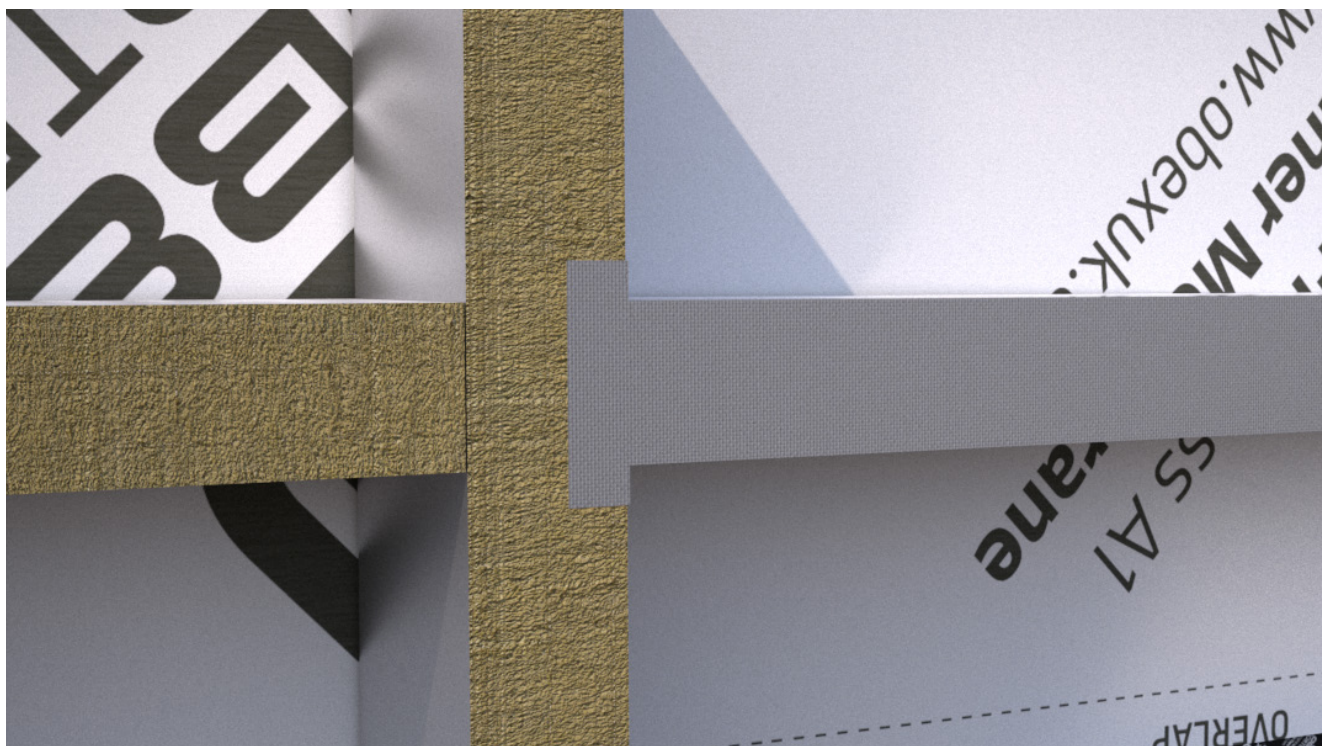
5

Flip the membrane over and line it up with the horizontal cavity barrier. Ensure there is a 25mm overhang on either side of the barrier, and that it overhangs the vertical barrier by 50mm.



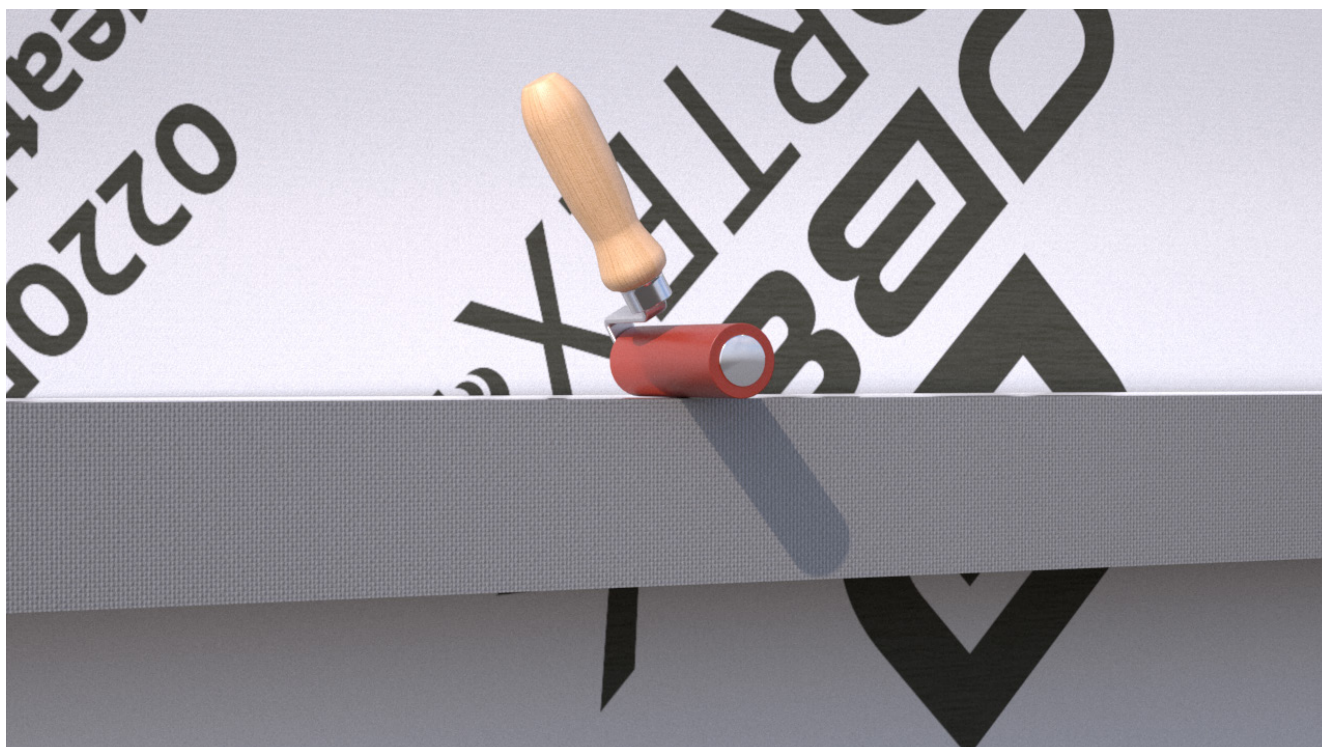
6

Cut the membrane flush with the vertical barrier, so that it can be folded over the horizontal barrier.



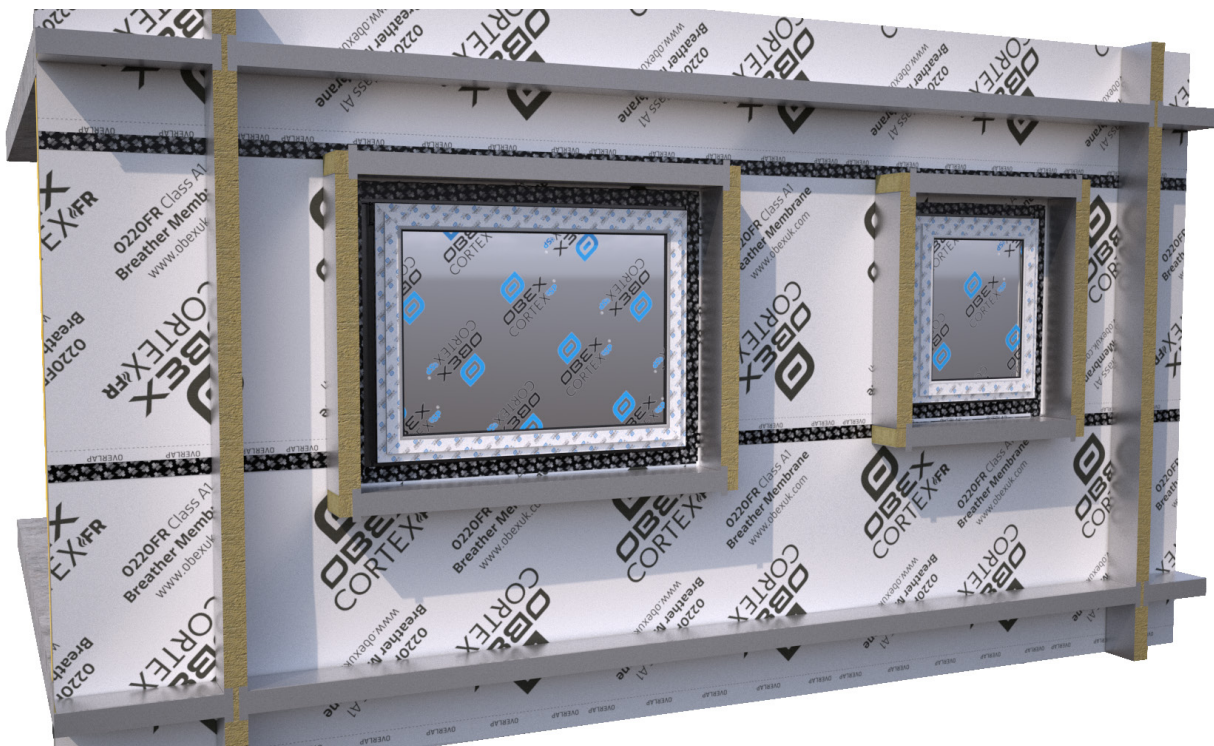
7

Fold the membrane over to bond to the horizontal cavity barrier's side faces.



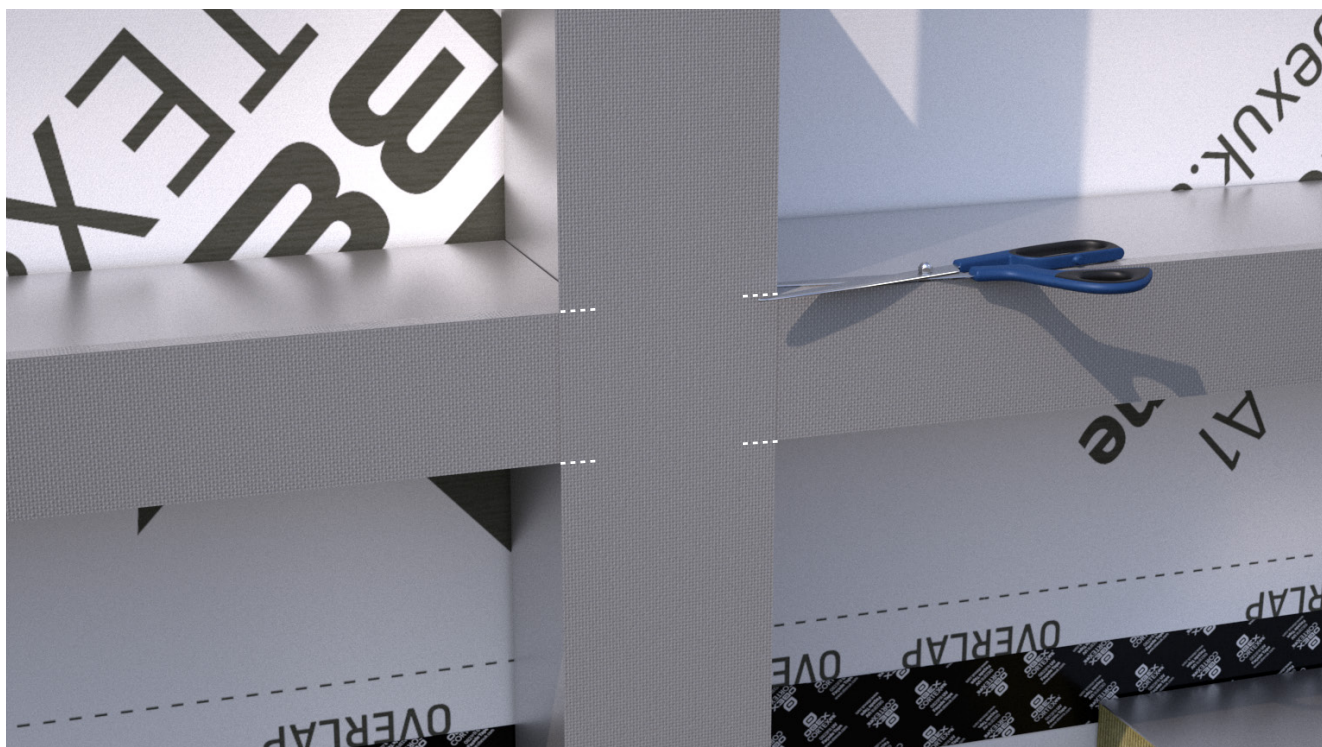
8

Firmly roll over the membrane to ensure a good bond strength from the adhesive on the rear of the membrane.



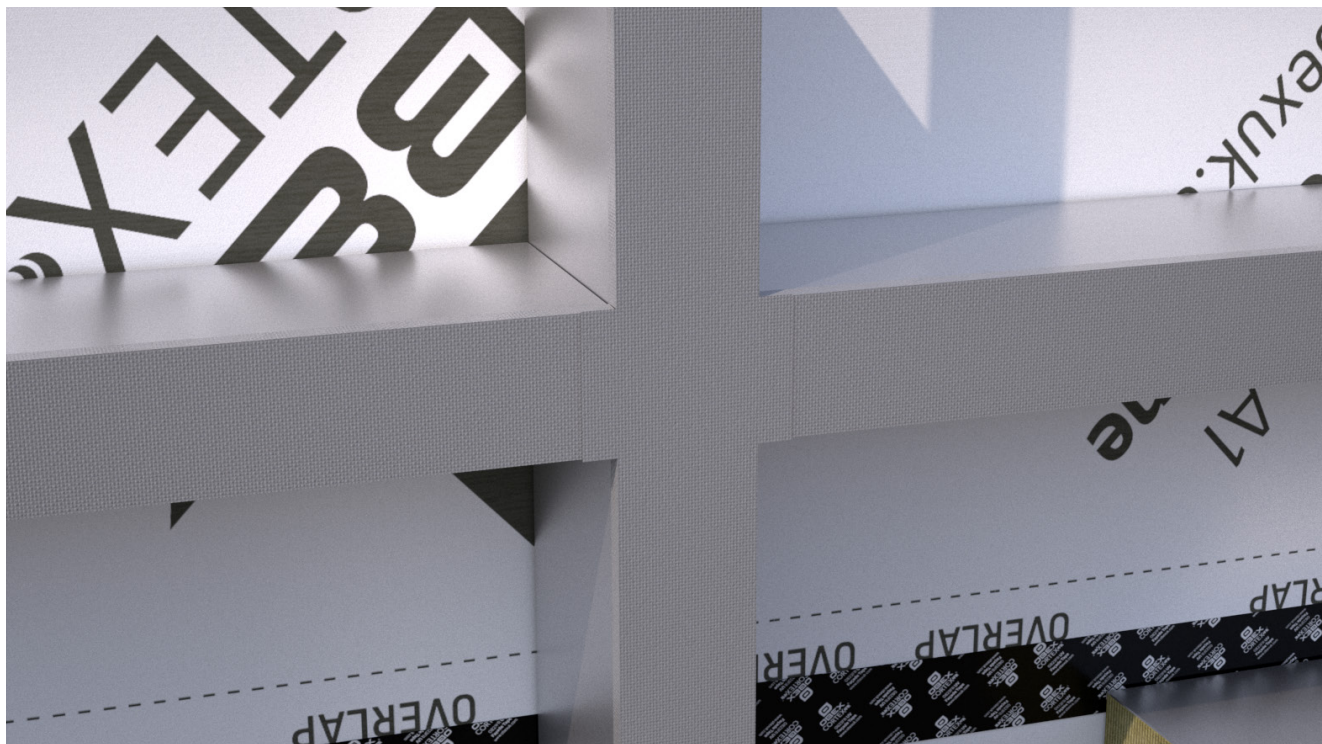
9

Complete all horizontal sections as per previous instructions.



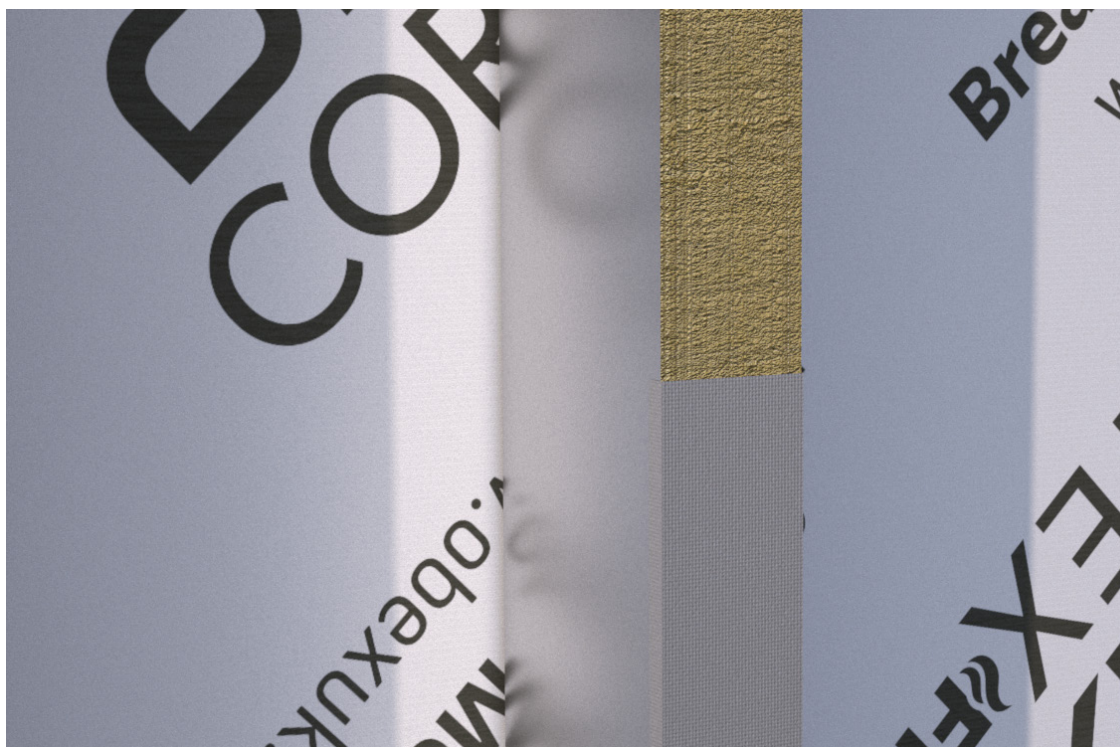
10

For vertical sections, repeat steps 2-5. When there is a joint between a vertical and horizontal barrier, cut the membrane flush with the horizontal, so that the membrane can be folded over the vertical barrier.



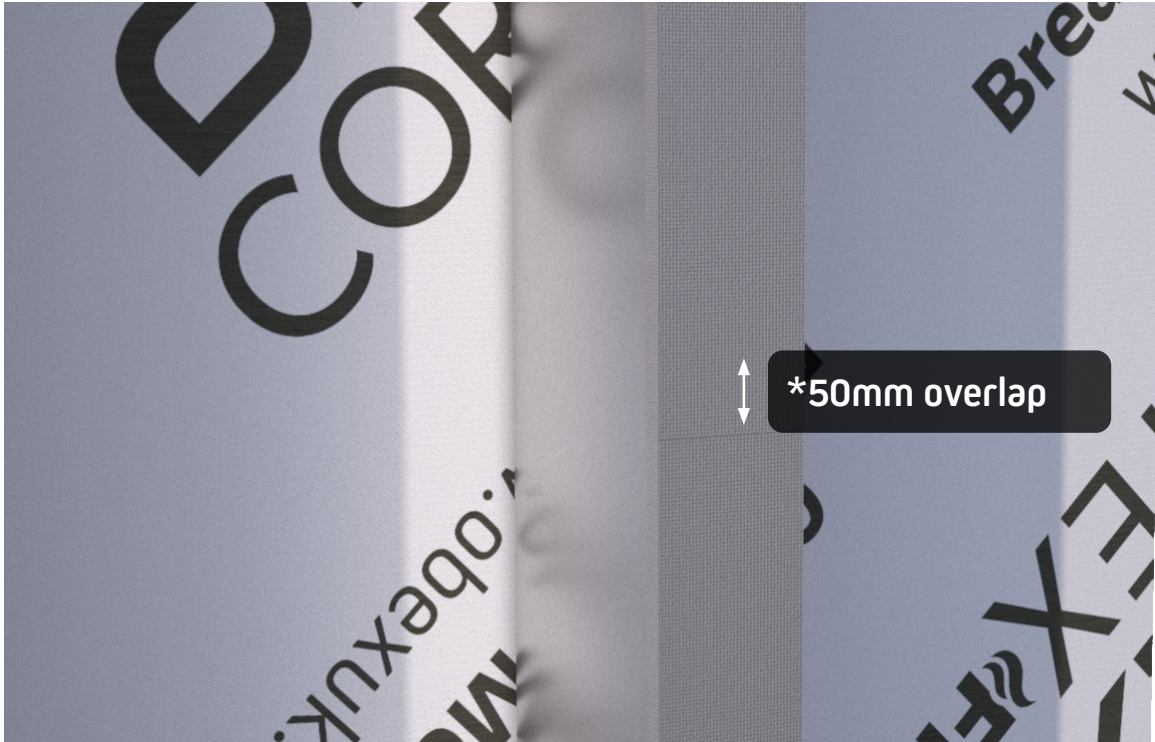
11

Fold the membrane over and bond onto the vertical cavity barrier's side faces.



12

If covering a barrier longer than the remaining membrane on the roll, apply the remaining membrane as per the previous steps, then continue to the next step for the overlap guides.



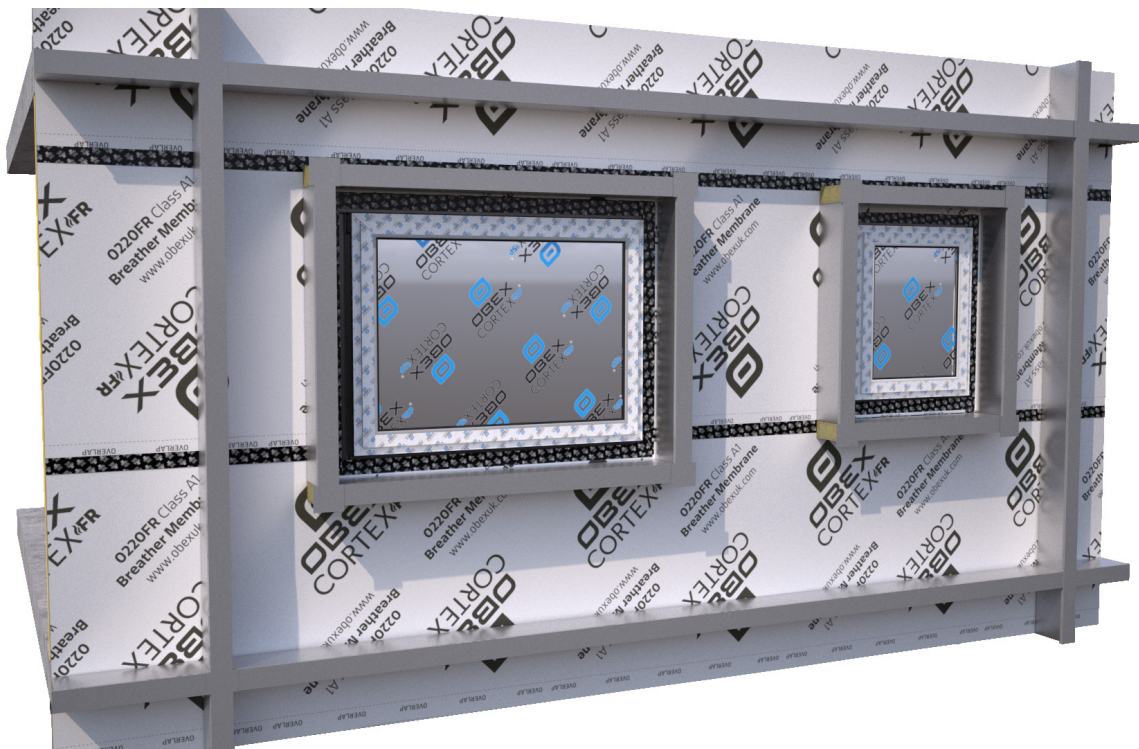
13

With a new roll of membrane, overlap the lower membrane by at least 50mm, and install as per previous steps.



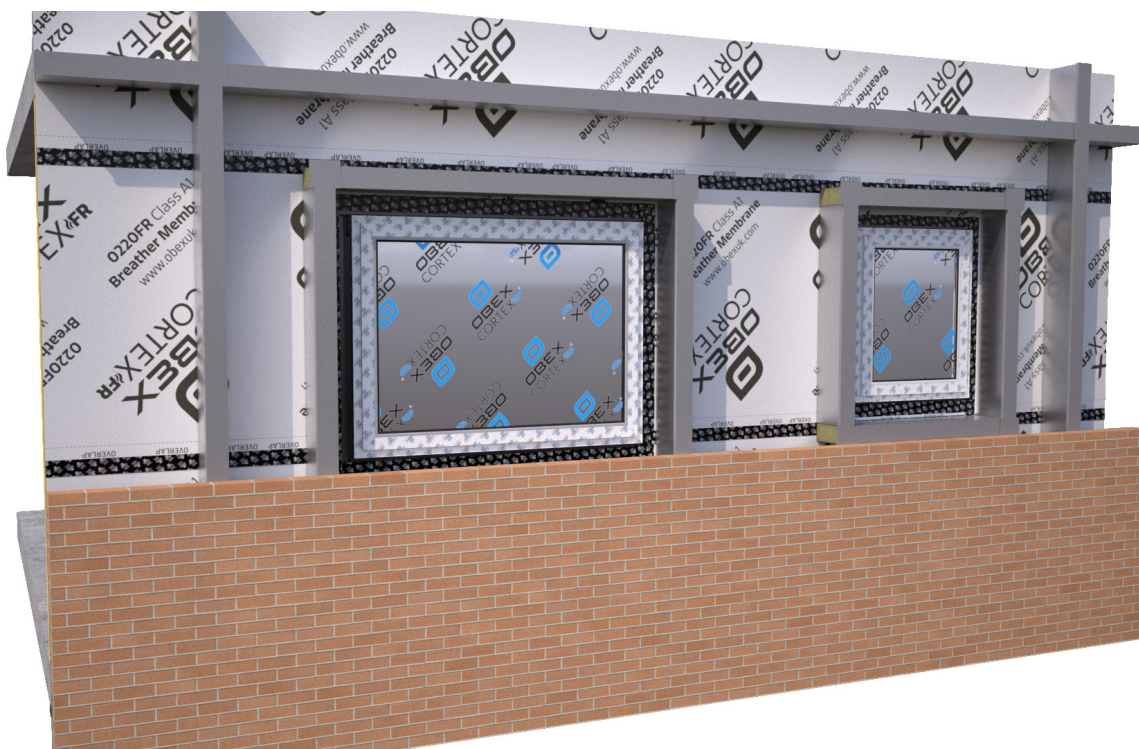
14

Ensure to roll over the sides of the membrane with firm pressure to achieve a good bond strength.



15

Continue to complete all vertical sections as per previous instructions.



16

This is how the wall should look as the brickwork is built up.



OBEX Protection Ltd. Unit 5 Indurent Park, Norton Road, Broomhall, Worcester, WR5 2QR

Call: +44 (0) 1905 337800 | **Email:** sales@obexuk.com | **Visit:** www.obexglobal.com/uk

© Copyright 2022 OBEX. All rights reserved. Company Registration No. 09157067, VAT No: 868 7649 48