

 INSTALLATION GUIDE

**OBEX**  **CORTEX<sup>FR</sup>**

0271FR

**Score'N'Snap**

**UltraBoard**

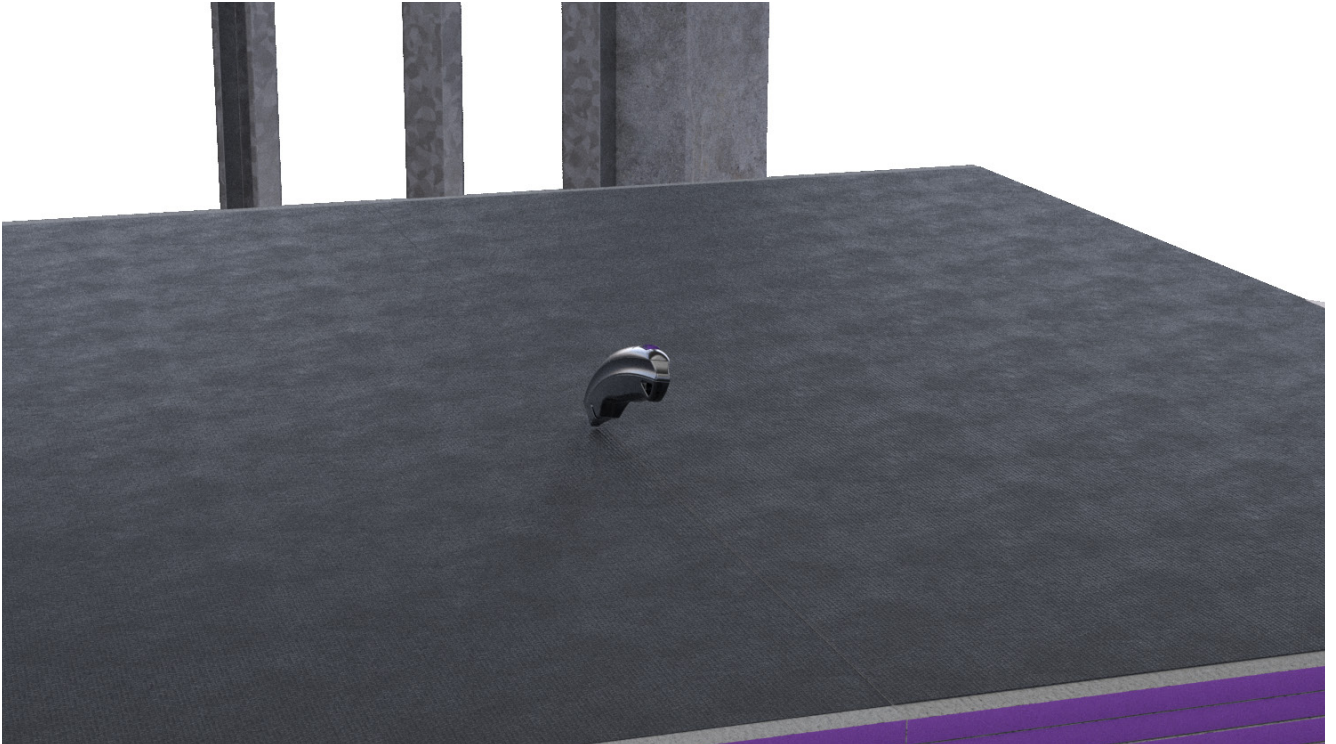
Class A2

Version 01.01.03

 **OBEX<sup>®</sup>**

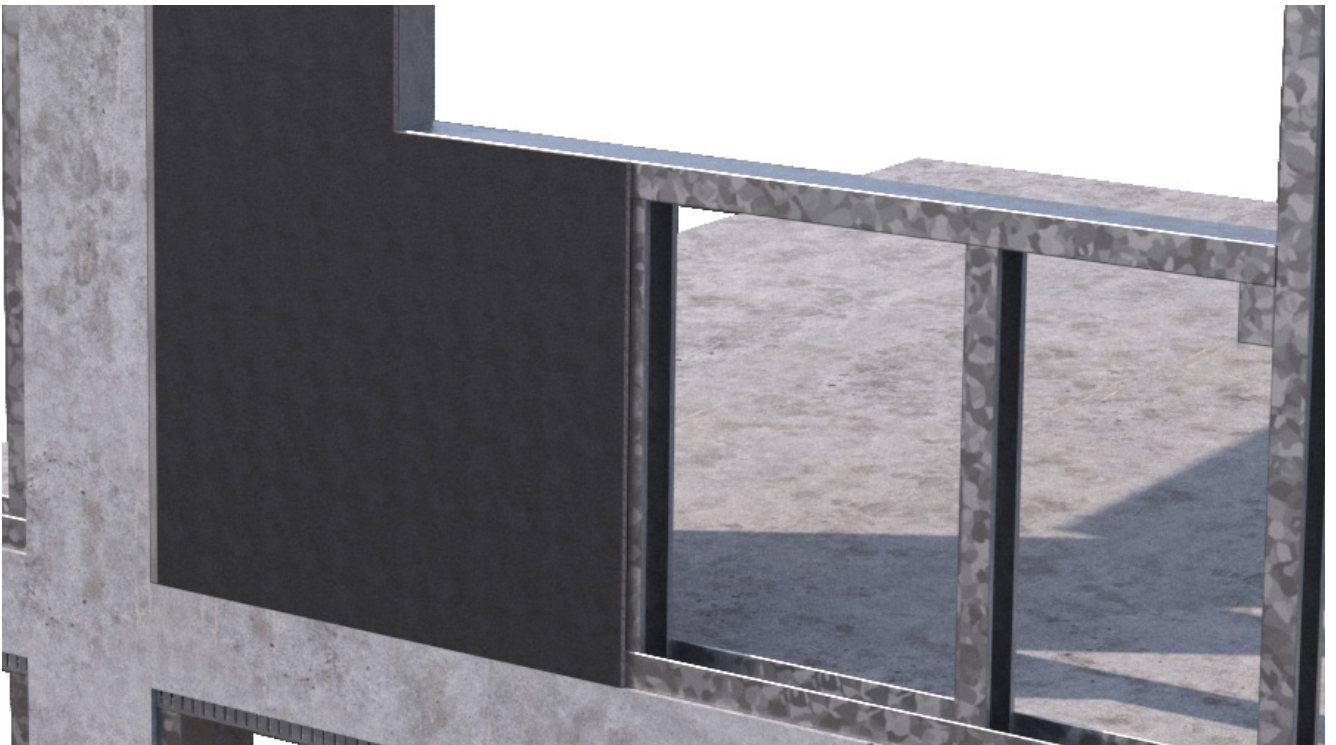
## Important Notes

- » OBEX CORTEX Membrane Systems have been checked and are compatible with the OBEX CORTEX Score'N'Snap UltraBoard System.
- » To ensure the correct OBEX CORTEX products are used, please check with the OBEX team prior to install. UltraBoard is compatible with OBEX CORTEX 0200FR & 0500FR ISM's. For other systems, please contact the OBEX team for support.
- » The OBEX CORTEX 0271FR UltraBoard can be curved to a radius of 3m. The 0271FR UltraBoard should be curved before installation.
- » Increased support or reduced centres of the framing may be required depending on the radius of the curve. Fine cracks may appear in the surface and core of the board during installation. These will not adversely affect the performance of the system.
- » A retractable safety knife can be used to cut the board along with the appropriate personal protective equipment.
- » The frame to which the board is fixed must be structurally sound and constructed in accordance with the relevant building regulations and standards using framing grade timber or galvanized steel framework.
- » Studs should be a maximum of 600mm centres.
- » A suitably trained operative should supervise the installation of the board and supporting structure to ensure the quality of workmanship.
- » OBEX CORTEX 0271FR UltraBoard is suitable for all façade types: Brick, Stone, Rainscreen Cladding, Timber, Insulated Render Systems and Metal Cladding. UltraBoard is not compatible with Direct Render Systems.
- » Consideration of wind loading calculations may be required and should be completed by a competent engineer
- » When installing at ground level or onto a deck, ensure a 10-15mm between the board and the ground
- » Windows and doors may be installed before or after fitting the 0271FR UltraBoard.
- » Any damaged boards should be replaced. Any areas where the black membrane has been scraped or damaged should be repaired with a patch of 150mm jointing tape. Overlaps should be a minimum of 50mm past the furthest extent of the damage. Boards must not be dragged or slid off the pallet as this may damage the membrane.
- » Brush off dust around board edges before sealing with the 0272FR Jointing Tape.



1

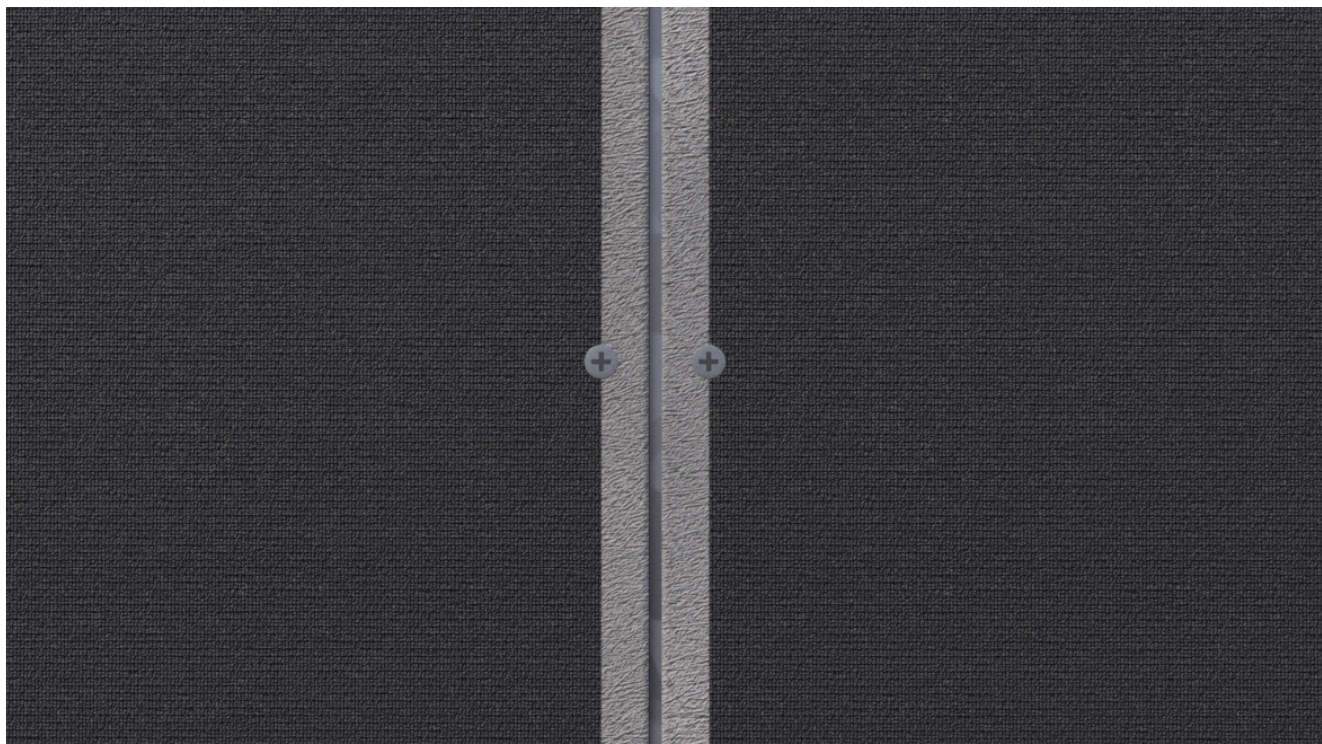
Once the desired dimensions have been marked on the board, using a suitable knife, score the board with a single firm cut on one side ensuring the top surface has been cut. Firmly bend and snap the board along the initial cut, and then cut the mesh on the reverse side.



2

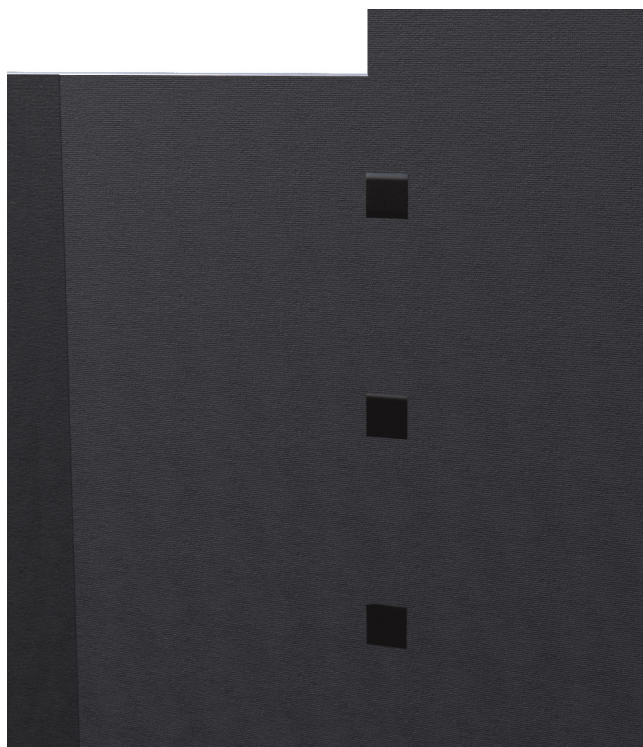
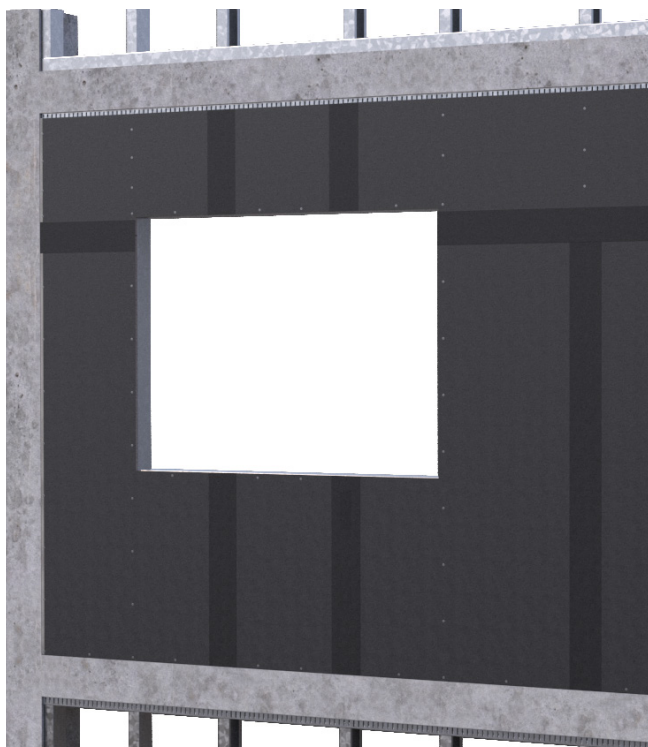
Offer up the board into position, ensuring the edges of the board are just shy of the centre line of the framing member to leave the recommended 3-5mm gap.





3

0290FR Screws should be used to fix the board to the support framing (for steel up to 3mm thick). Screws should be a minimum of 15mm in from the board edges (the membrane layer finishes 15mm from edge of the board for screw alignment), spaced at a maximum of 400mm centres (depending on wind load design calculations - 300mm spacing is standard practice) and must not be overtightened. (Screws should penetrate a minimum of 10mm through steel and 25mm into timber). The board should not be fixed into expansion head track.

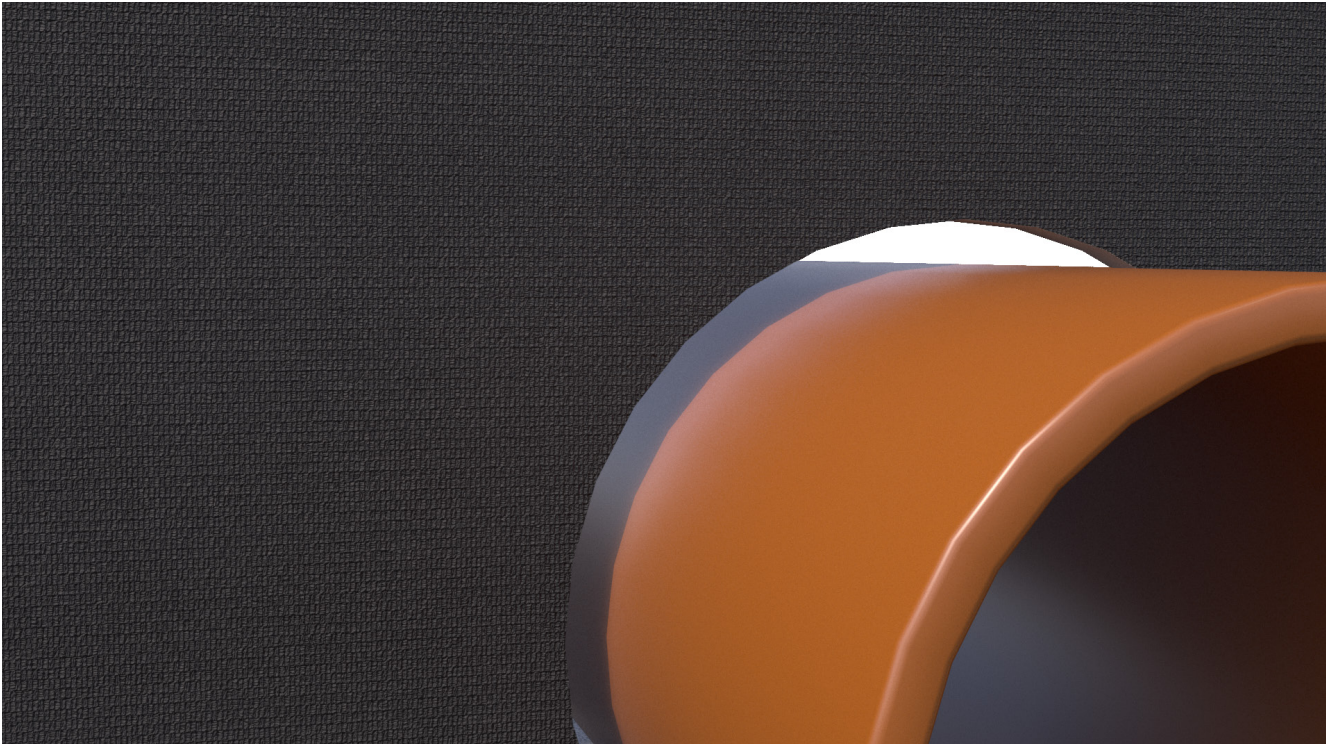


4

Cover all joints with OBEX CORTEX 0272FR UltraBoard Jointing Tape and cover screw heads with OBEX CORTEX 0273FR Sealing Patches.

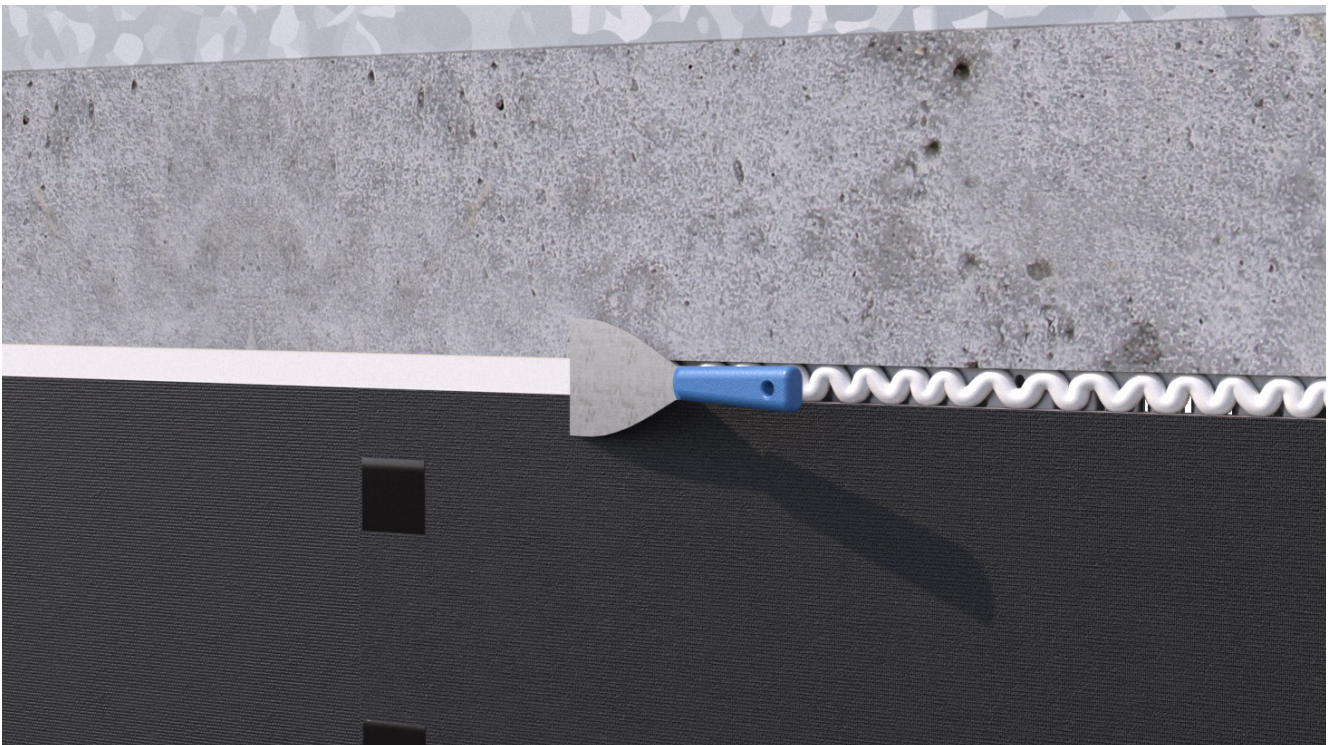
**IMPORTANT:** UltraBoard Jointing Tape and Patches must be firmly rolled to ensure maximum adhesion.





5

For service penetrations such as pipework or ducting, a hole shall be cut 10mm larger than the penetration. The gap around the service item shall be sealed using approved fire stopping materials.



6

Fill expansion gap at the head flush with OBEX CORTEX 0280FR Board Sealant.



**OBEX Protection Ltd.** Unit 5 St. Modwen Park, Norton Road, Broomhall, Worcester, WR5 2QR

**Call:** +44 (0) 1905 337800 | **Email:** [sales@obexglobal.com](mailto:sales@obexglobal.com) | **Visit:** [www.obexglobal.com](http://www.obexglobal.com)

© Copyright 2024 OBEX. All rights reserved. Company Registration No. 09157067, VAT No: 868 7649 48