

 INSTALLATION GUIDE

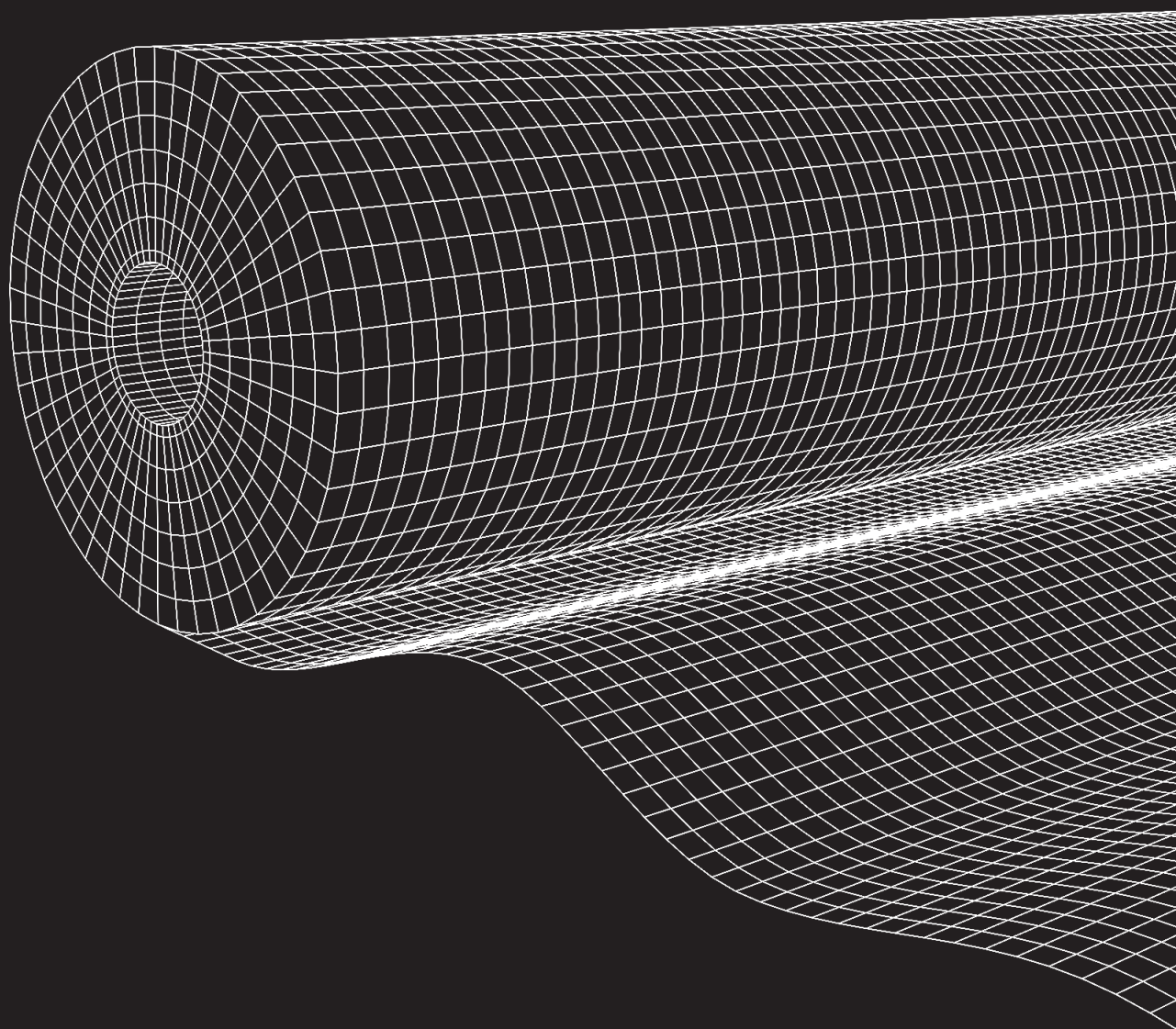
**OBEX**  **CORTEX<sup>FR</sup>**

0530FR

**AVCL**

**Membrane**

Class B



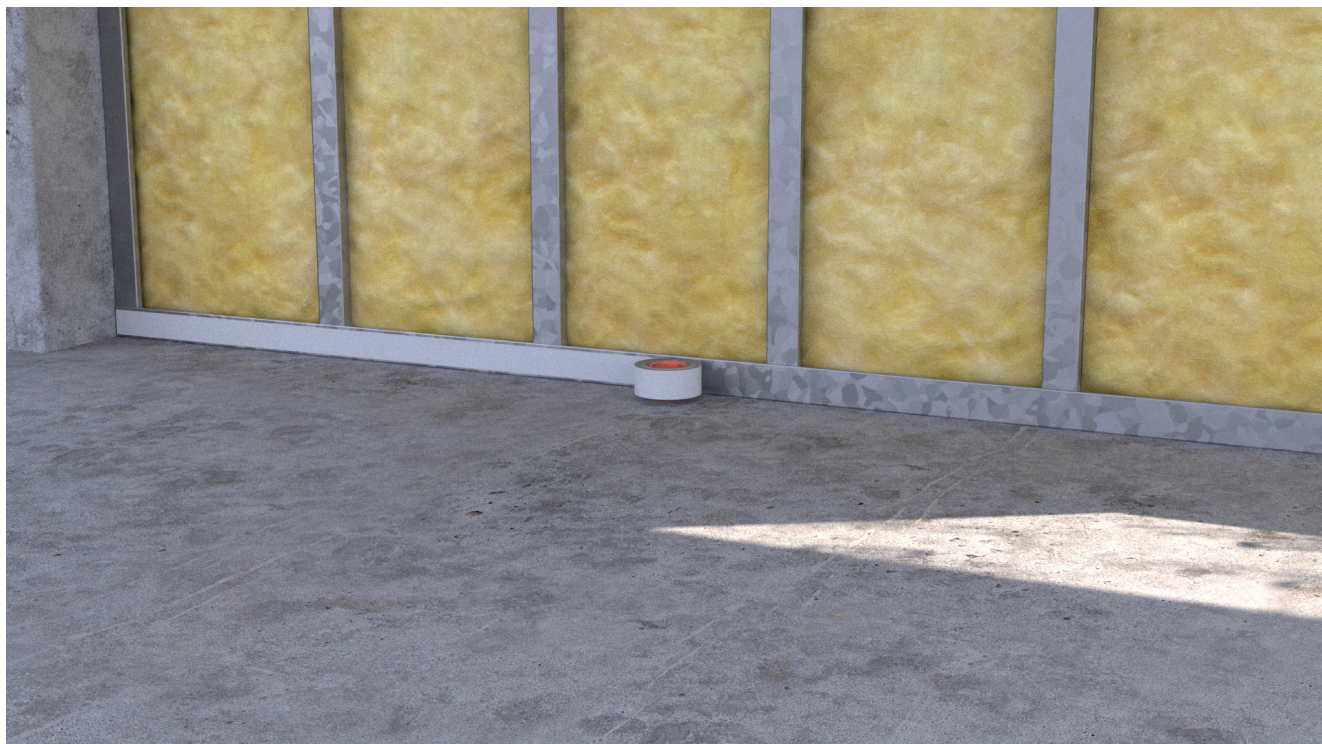
 **OBEX<sup>®</sup>**

VERSION: 01.02.01

## Important Notes

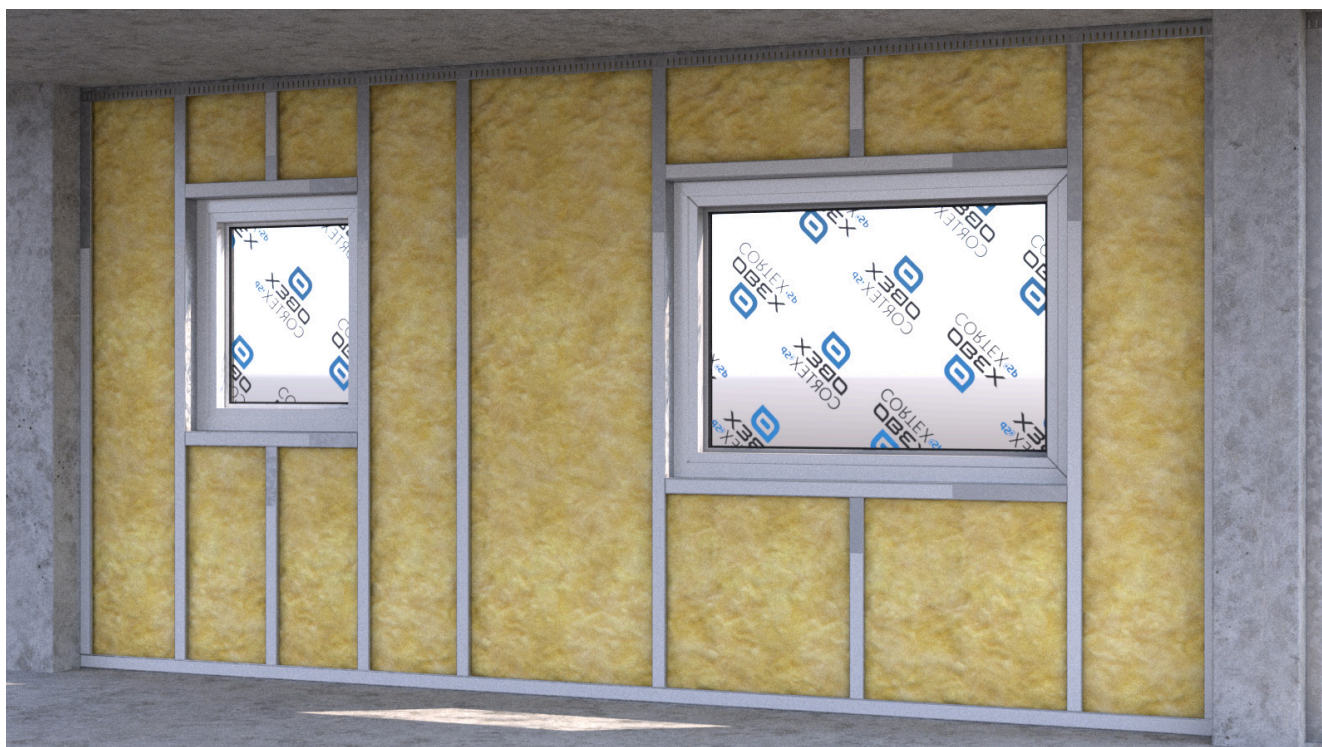
- » It is recommended that membrane overlaps should be 50mm wide.
- » Laps shall be sealed with OBEX CORTEX 0823FR UV Façade Tape.
- » The purpose of a vapour control layer is to form a fully airtight/vapour tight barrier.





1

Start by applying the OBEX CORTEX 0824FR Double-Sided Tape to the base track. Consider where fixings may penetrate the vapour control layer and ensure that double-sided tape is present at these locations. Do not apply d/s tape to the head track - this is to allow for expansion/contraction.



2

Apply OBEX CORTEX 0824FR Double-Sided Tape to the vertical studs, considering where fixings may penetrate the vapour control layer and ensure that double-sided tape is present at these locations. Do not apply d/s tape to the head track - this is to allow for expansion/contraction.





3

Peel off the release liner from the double-sided tape. Some may prefer to remove this as they adhere the membrane.



4

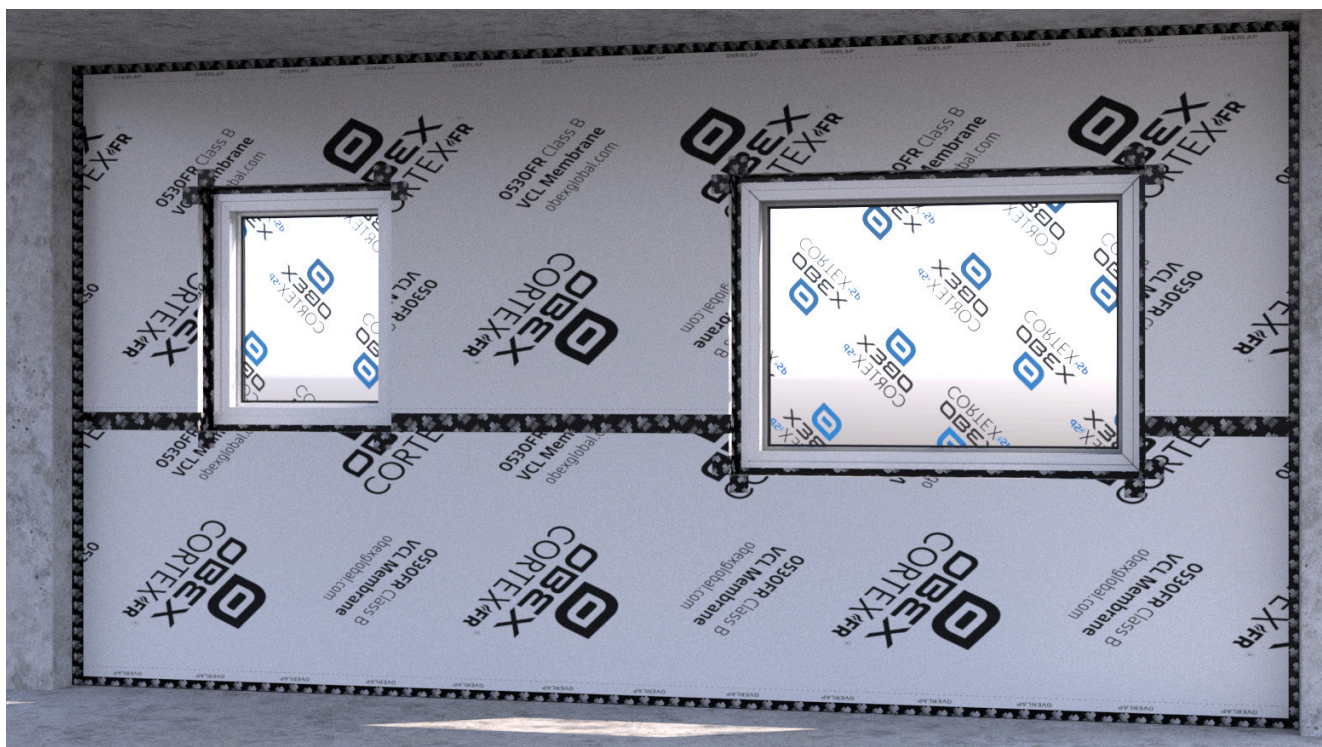
Apply the vapour control layer over the double-sided tape in horizontal strips starting from the base. It is recommended that the next layer should overlap the previous layer by 50mm. The membrane **MUST** be installed with the printed side visible to the installer.





5

Where possible, the membrane should be continuous so any penetrations should be cut out during application, or it can be applied over the top and cut out afterwards.



6

Seal off all edges and joins with OBEX CORTEX 0823FR UV Façade Tape, including where the membrane junctions with other AVCLs or the head/floor concrete slab.



UK  
OBEX Protection Ltd.  
+44 (0)1905 337 800  
[www.obexuk.com](http://www.obexuk.com)

AU  
OBEX Group Pty Ltd.  
+61 (0)248 691 932  
[www.obexau.com](http://www.obexau.com)

EU  
OBEX Protection France  
+33 (0)4 94 65 86 14  
[www.obexeu.com](http://www.obexeu.com)