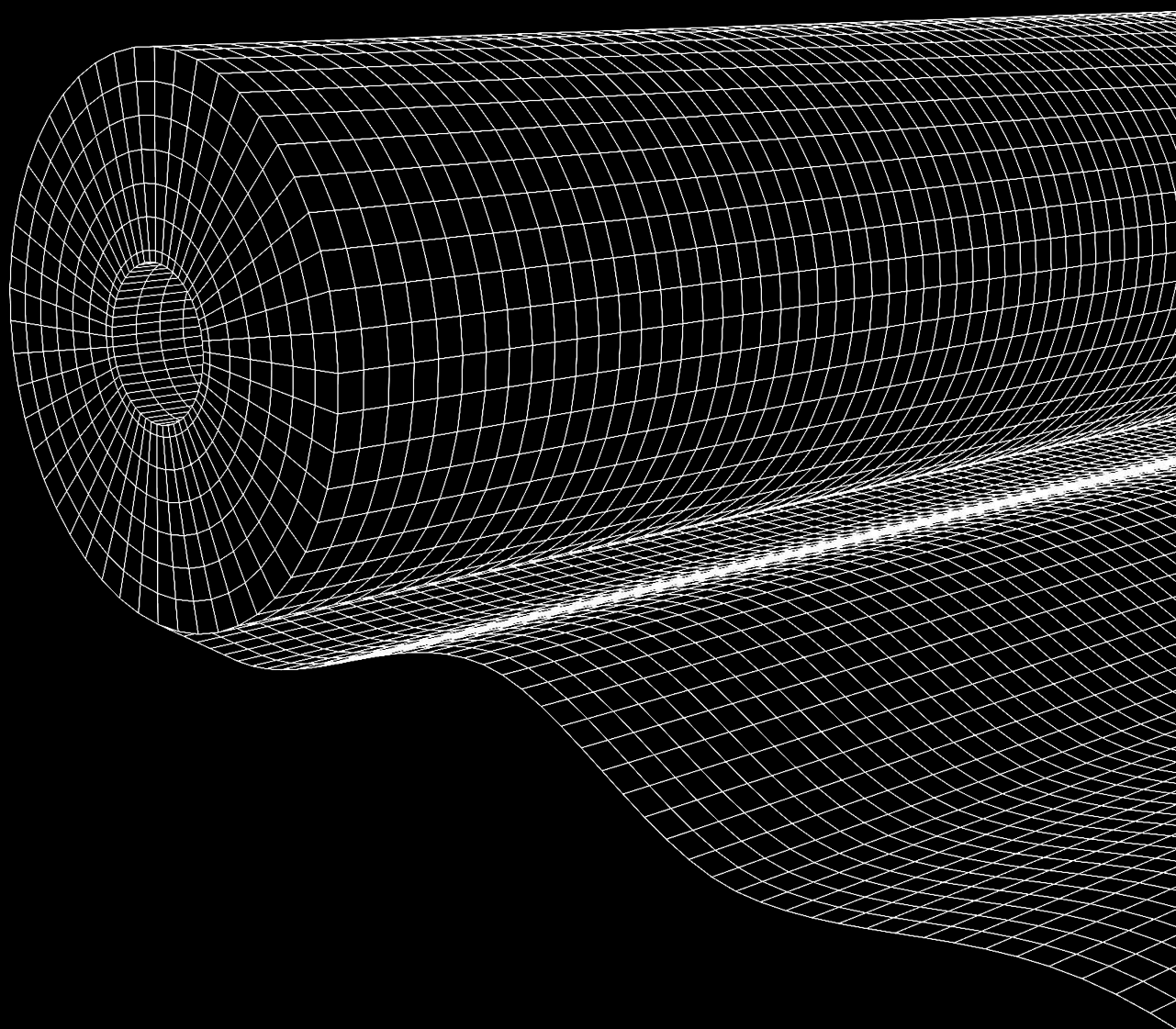


 INSTALLATION GUIDE

OBEX  **CORTEX[®]**

0831

AVCL Membrane



 **OBEX[®]**

VERSION: 01.01.01

Important Notes

- » It is recommended that membrane overlaps should be 50mm wide.
- » Laps shall be sealed with OBEX CORTEX 0855 Single-Sided Tape.
- » The purpose of a vapour control layer is to form a fully airtight/vapour tight barrier.



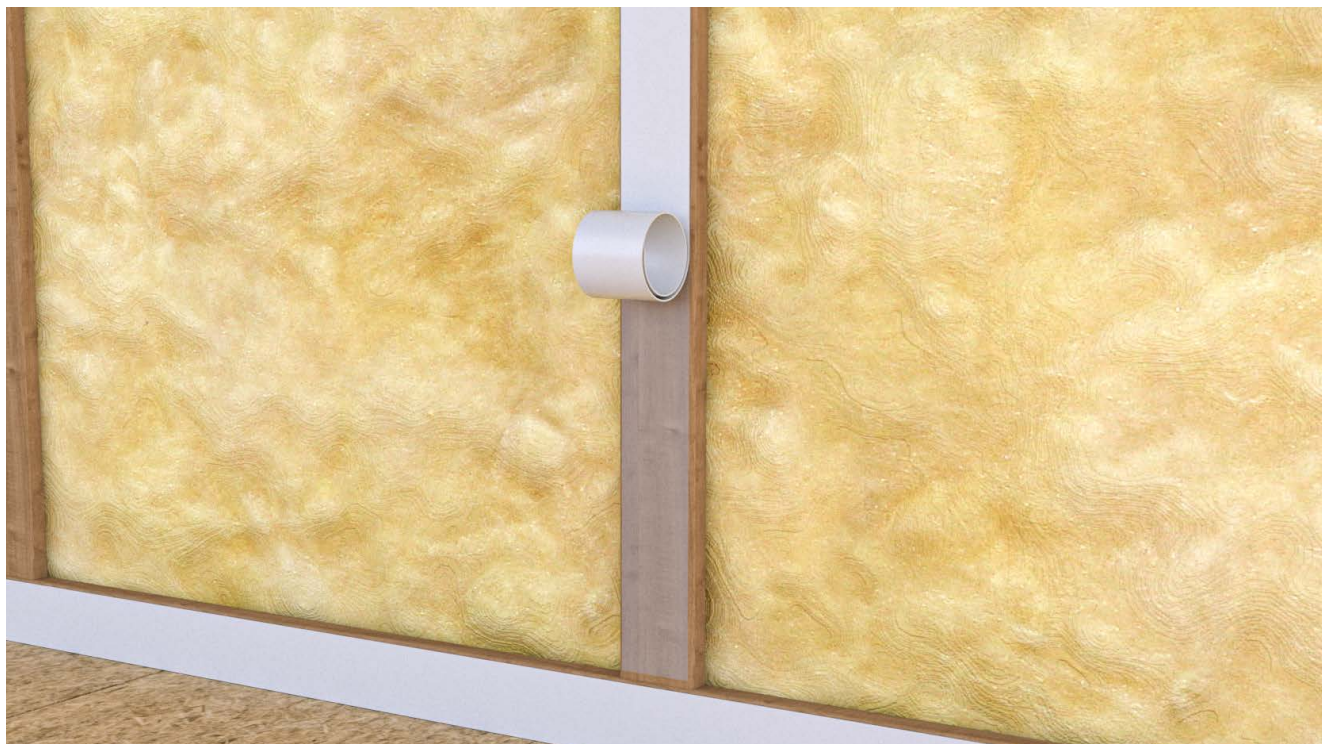
1

Start by applying the OBEX CORTEX 0850 Double-Sided Tape to the base track. Consider where fixings may penetrate the vapour control layer and ensure that double-sided tape is present at these locations.



2

Apply OBEX CORTEX 0850 Double-Sided Tape to the studs and head track, considering where fixings may penetrate the vapour control layer and ensure that double-sided tape is present at these locations.



3

Peel off the release liner from the double-sided tape. Some may prefer to remove this as they adhere the membrane.



4

Apply the vapour control layer over the double-sided tape in horizontal strips starting from the base. It is recommended that the next layer should overlap the previous layer by 50mm. The shiny printed layer should be facing into the building (towards the direction of high vapour).



5

Where possible, the membrane should be continuous so any penetrations should be cut out during application, or it can be applied over the top and cut out afterwards.



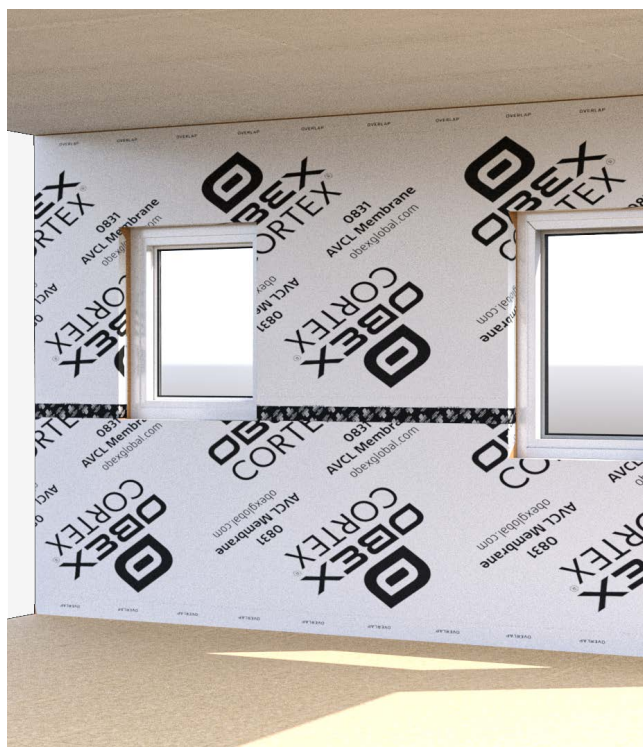
6

Continue rolling out further layers of AVCL until the section of wall is fully covered.



7

Repeat step 5 for any further layers of AVCL membrane.



8

Seal off all edges and joins with OBEX CORTEX 0855 Single-Sided Tape.



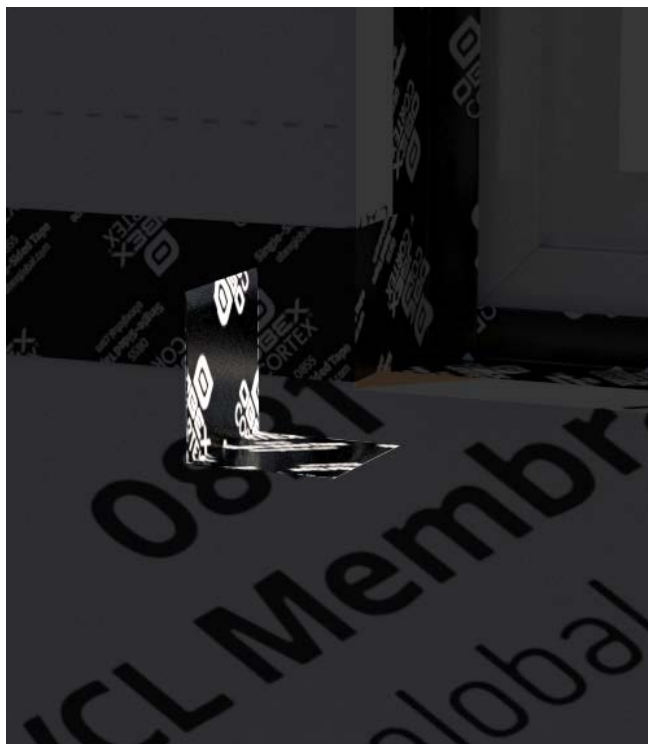
9

For window sealing, apply 0855 Single-Sided Tape to the base first, lapping onto the window frame by a minimum of 20mm, and ensure adhesion to both the AVCL and the frame.



10

Next seal the sides of the frame, and finally the top edge.



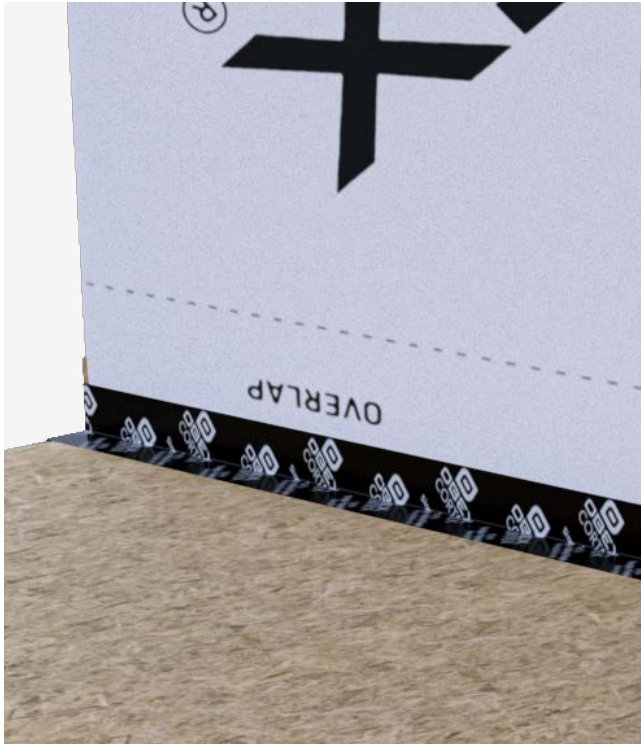
11

To seal inset corners, cut a section of 0855 Single-Sided Tape and overlay the tape already installed on the inside of the window cutout until any cuts are completely sealed.



12

Overlap the previous tape outside of the cutout onto the main area of AVCL to ensure an airtight seal.



13

Apply 0855 Single-Sided Tape to the floor & head joints, completing the sealing of the membrane.



14

This is how the wall should look with a correctly installed AVCL Membrane.



OBEX Protection Ltd. Unit 5 St. Modwen Park, Norton Road, Broomhall, Worcester, WR5 2QR

Call: +44 (0) 1905 337800 | **Email:** sales-uk@obexglobal.com | **Visit:** www.obexglobal.com

© Copyright 2024 OBEX. All rights reserved. Company Registration No. 09157067, VAT No: 868 7649 48