

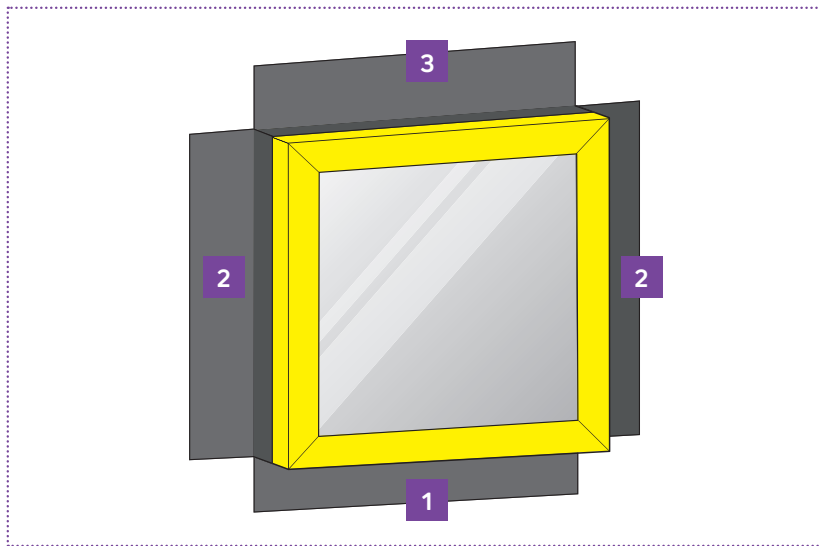
OBEX

How to Install...

Cortex 0860 Fully Adhesive Backed EPDM Membrane

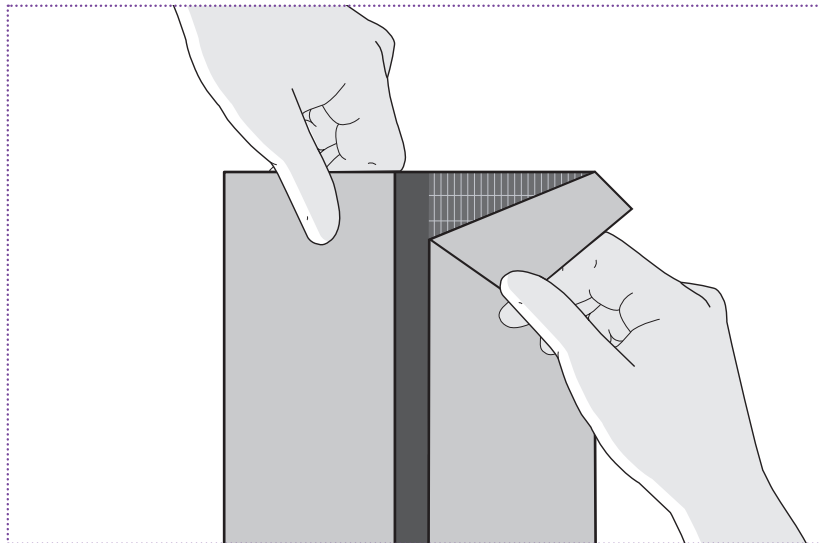


www.obexuk.com

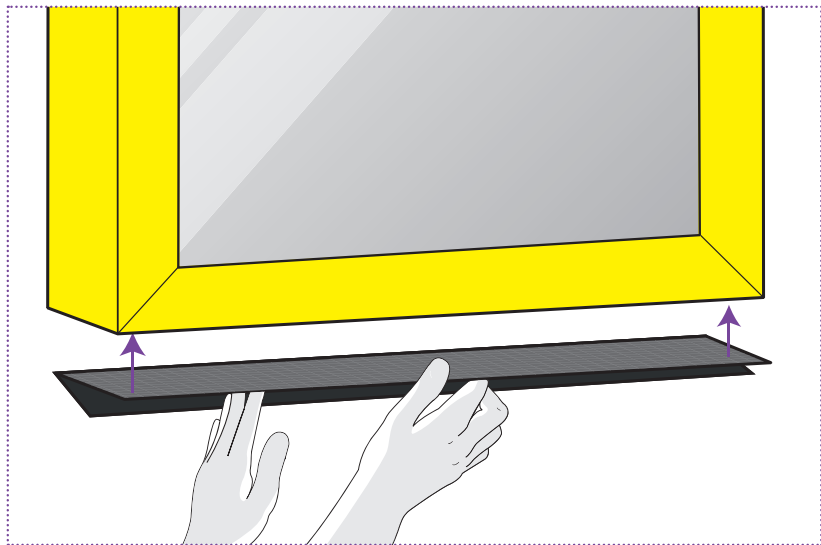


1

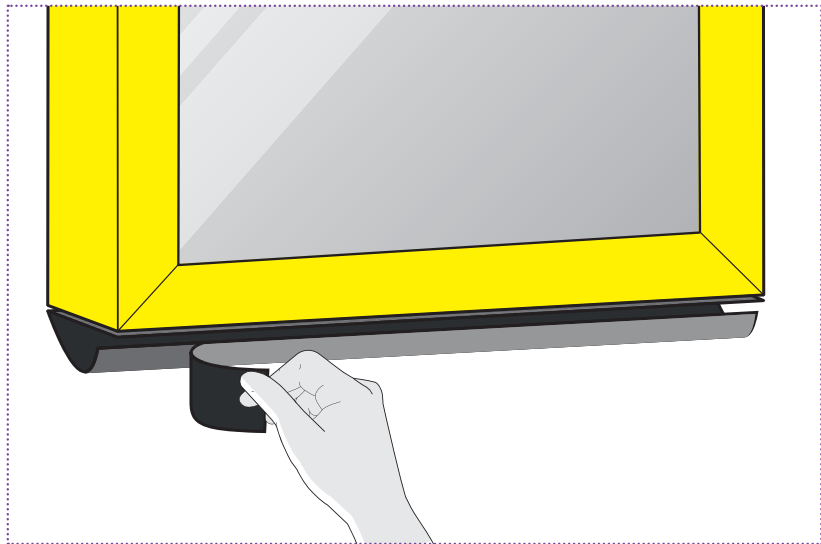
Cortex EPDM Membrane should be fitted in this order around the window: sill, jambes and then head.



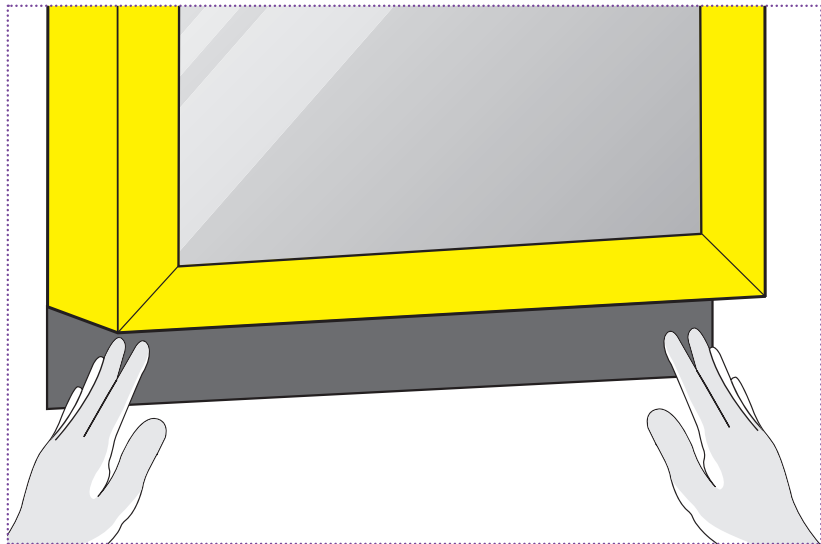
Remove the release liner from one edge off the back of the EPDM Membrane.



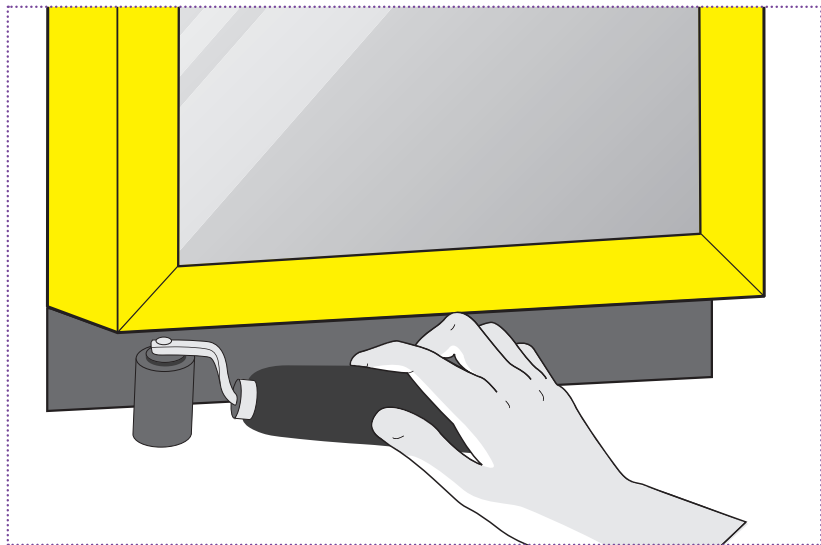
Bond the membrane to the frame first.



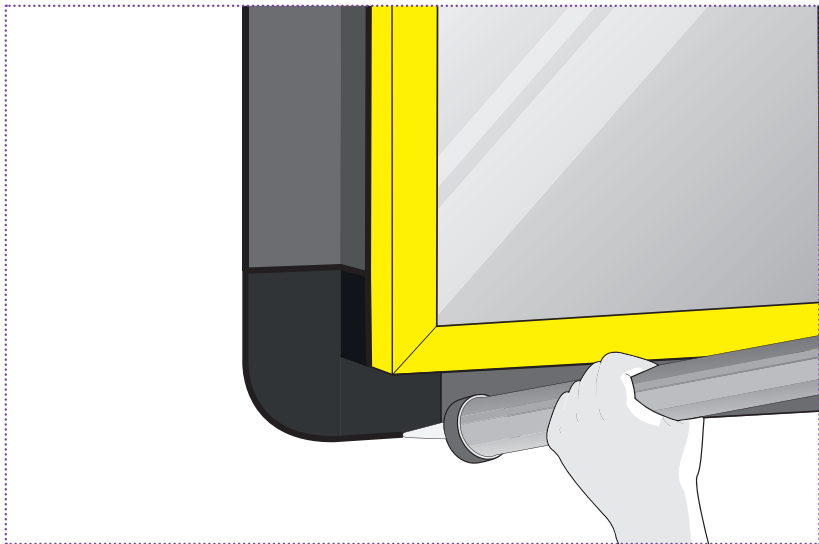
Remove the release liner from the other edge off the back of the EPDM Membrane.



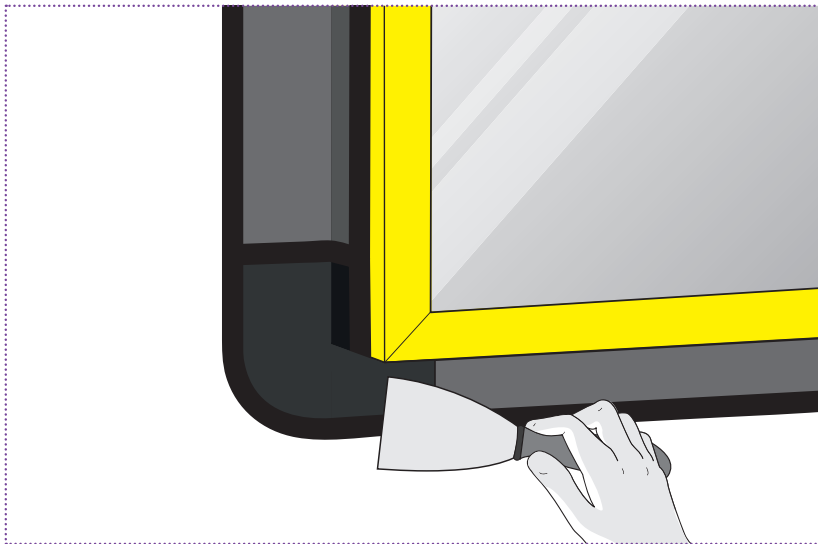
Now bond back to the substrate - ensuring the membrane is applied without creases.



Roll firmly with a seam roller to ensure maximum bond strength to all surfaces. Now apply Cortex 0860 Adhesive Backed Membrane to the other sides of the window using steps 2 to 5.



Corners can be sealed using Cortex 0901 External Corners. Apply a bead of Cortex Paste Adhesive around the perimeter of the membrane and any joints/laps.



Tool off the paste adhesive with a spreader to ensure no open edges.



Once finished, the system should look similar to the above.

Tips

- » The width of the membrane must be designed with full consideration of the facade or window detail including the interior and exterior sides of the connection joint.
- » The recommended overlap between membranes and porous materials (concrete, brick) is a minimum 100mm. For non-porous material, we recommend at least a 20-30mm bond width.
- » Porous surfaces may need to be primed using Cortex 0785 Primer.
- » Cortex 0901 Corners can be used to provide a 100% watertight seal at corner junctions.

OBEX

CORTEX
EPDM membrane system



For technical assistance, call **01905 337800**,
email **sales@obexuk.com** or visit **www.obexuk.com**