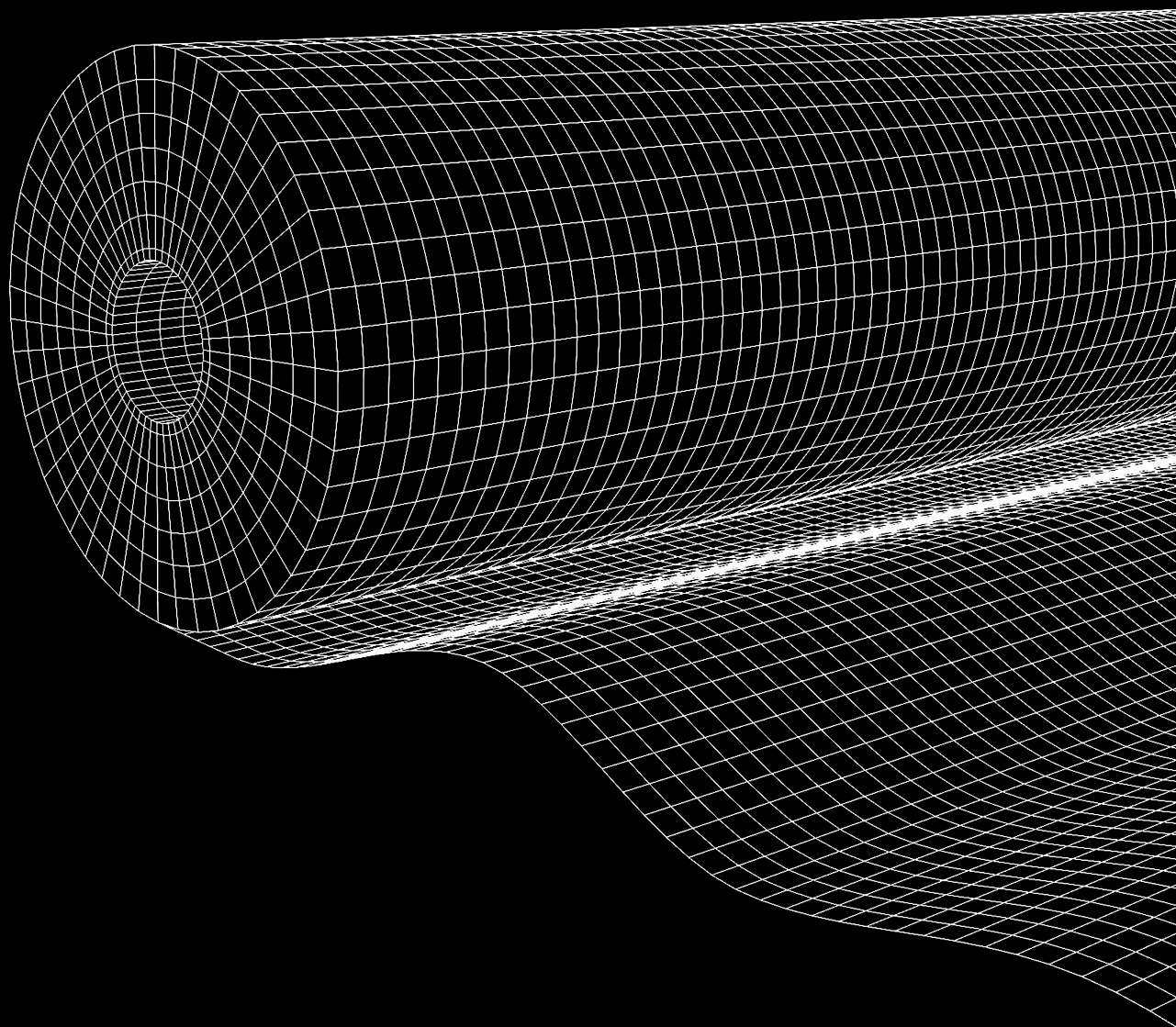


 INSTALLATION GUIDE

OBEX  **CORTEX^{FR}**

9021FR
**Breathable
Membrane**
Install Guide



 **OBEX[®]**

Contents

Metal Frame - Membrane onto Installation	03
Metal Frame - Window Reveal Dressing	05
Metal Frame - Internal Corner Membrane Installation	07
Wooden Frame - Membrane onto Frame Installation	08
Wooden Frame - Window Reveal Dressing	10
Wooden Frame - Internal Corner Membrane Installation	12
Penetration Sealing	13
Attachment Sealing	15

Important Notes

- » Please ensure a minimum overlap of 150mm between sections of the OBEX CORTEX Breathable Membranes.
- » Ensure that all exposed edges of the OBEX CORTEX Breathable Membrane are thoroughly sealed using OBEX CORTEX 0823FR UV Façade Tape for optimal protection and performance.

This installation guide has been created to provide installation best practice and guidance for installers. It is not a mandatory guide, and we recommend that installers familiarise themselves with the NCC for their region and ensure their installation meets the NCC requirements.

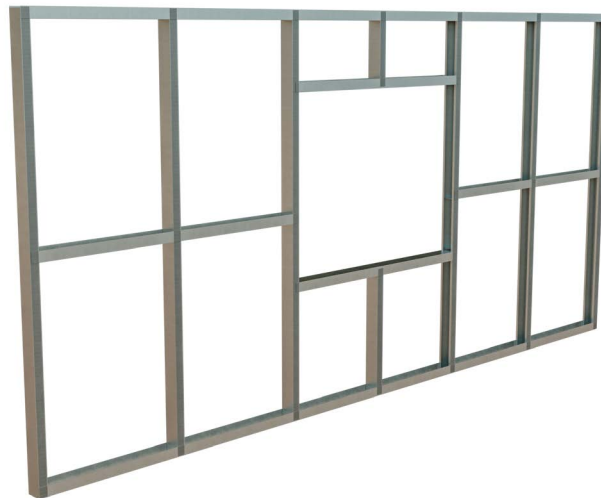
Metal Frame - Membrane onto Frame Installation



1

Metal Framing Preparation

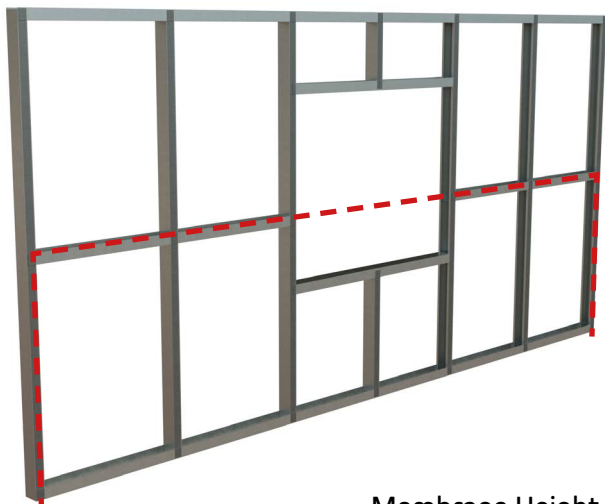
Before installing the Membrane, carefully remove any sharp edges or burrs to prevent potential damage to the membrane during installation and ensure the surface is clean and free from any contaminants.



2

Apply Double Sided Tape

Apply Double Sided Tape to all external faces of the metal framing. Press firmly onto the framing to ensure a good bond.

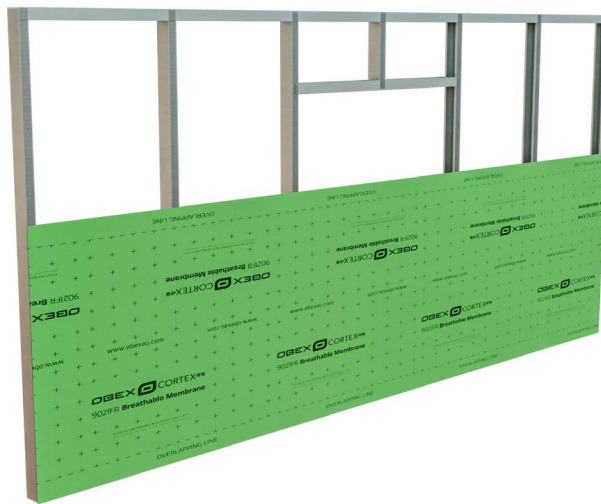


— — Membrane Height

3

Membrane Installation Setting Out

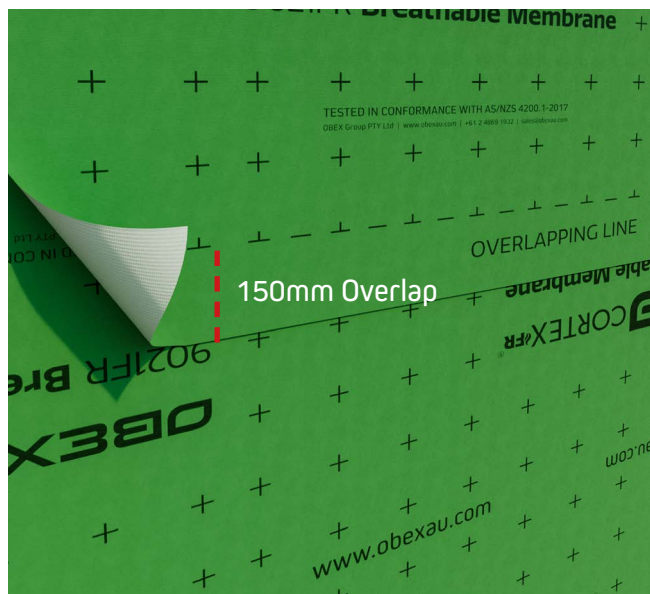
From the bottom of the framing, measure and mark the exact height corresponding to the width of the membrane. This will indicate where the top of the first layer of the Membrane should be installed.



4

Securing The Membrane

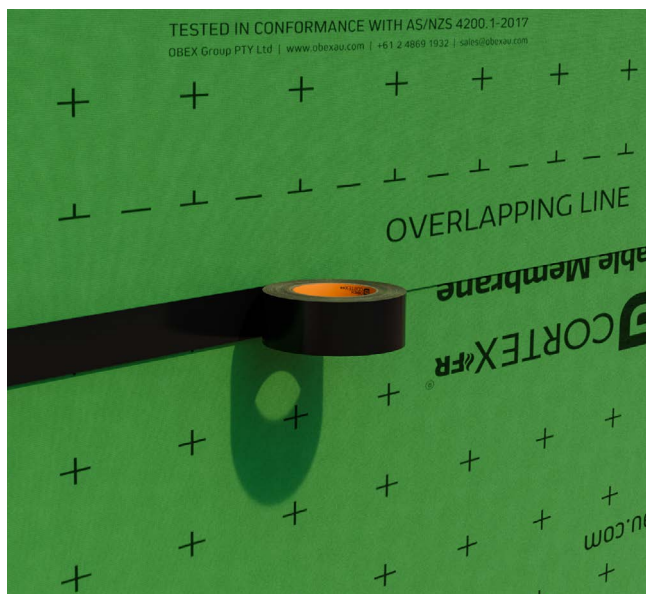
First, remove the release liner from the area designated for the initial Membrane layer. Align with the marked line and pull taut and affix the top edge securely. Then, pull and fix the bottom center edge, followed by securing both bottom corners tautly. Finally, press down across the entire Membrane section to ensure firm adhesion to the Double-Sided Tape.



5

Installing Additional Membrane Layers

Continue installing the Membrane layers above the first, using the same steps. Ensure each new layer overlaps the one beneath by 150mm, maintaining this consistency for all subsequent layers. This overlap is key for seamless coverage and optimal performance of the membrane system.

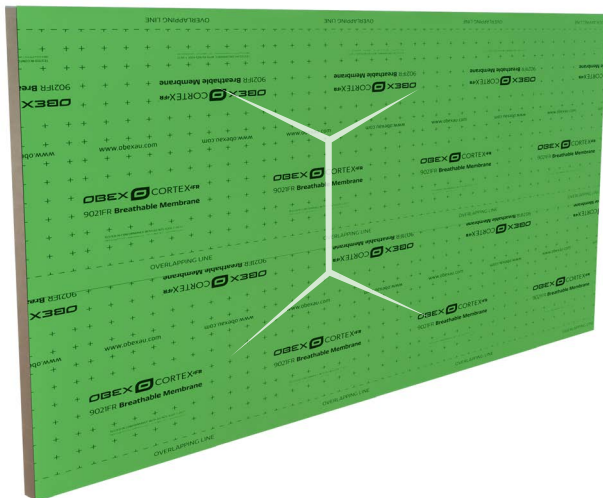


6

Overlap Edge Sealing

Use OBEX CORTEX UV Facade Tape to seal all horizontal overlaps of the Membrane. Ensure to apply firm pressure for secure and effective adhesion.

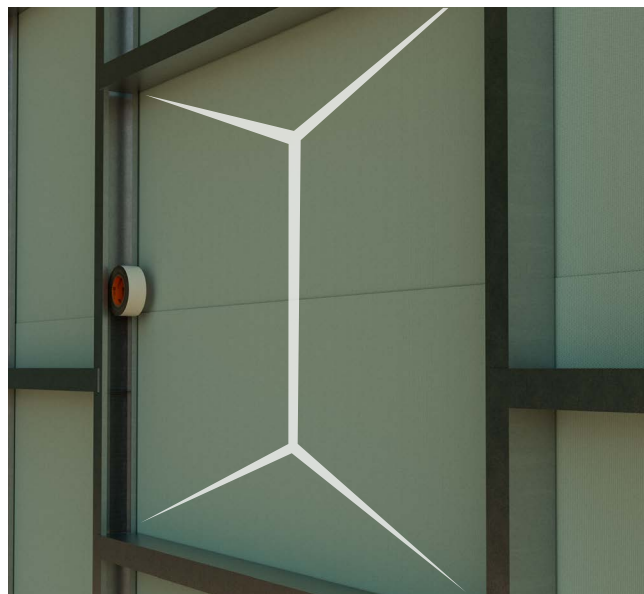
Metal Window Reveal Dressing



1

Window Reveal Dressing

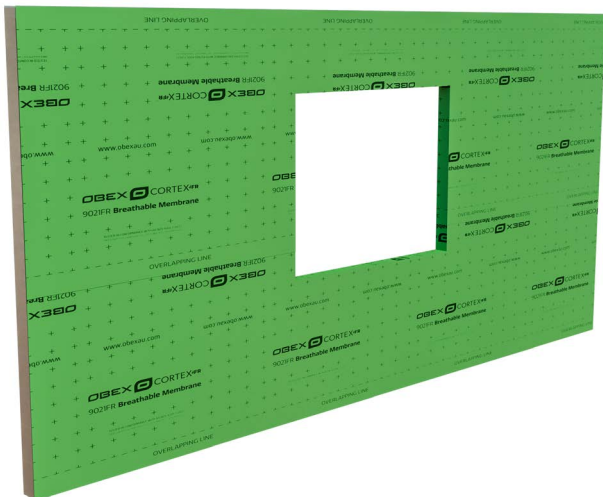
Cut the Membrane from the center of the window area out towards each of the four corners. This will create four flaps that can be neatly folded back into the window reveal.



2

Apply Double Sided Tape To Reveals

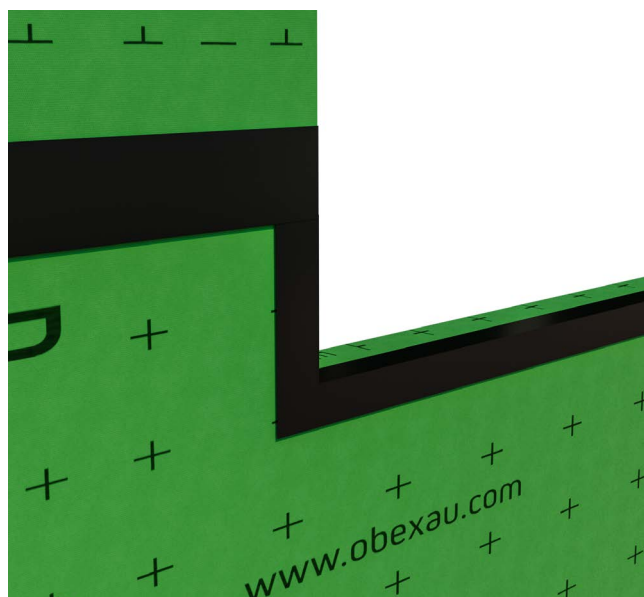
Attach Double-Sided Tape along the rear edge of all four sides of the window reveal, then carefully remove the release liner. Ensure the surfaces are clean prior to tape application.



3

Lining The Reveal

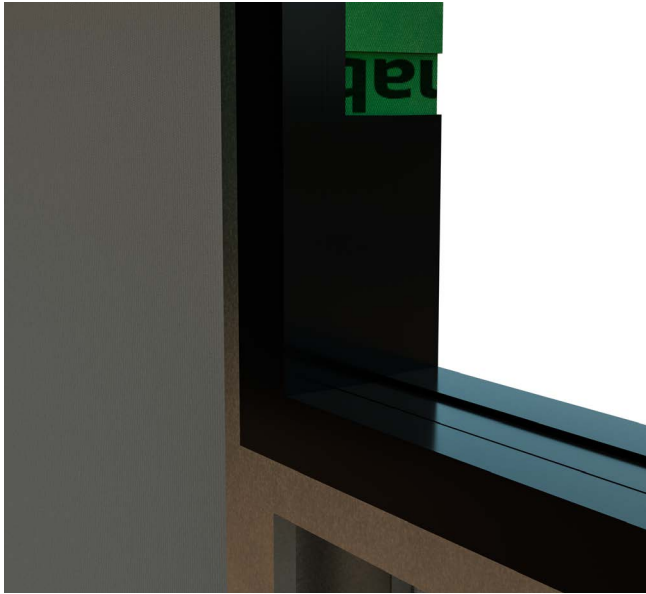
Fold the Membrane flaps into the reveal, firmly pressing them onto the Double-Sided Tape. Trim any excess membrane to align with the back edge of the metal framing for a neat finish.



4

Sealing The Corners Of The Reveal

The next step is to thoroughly seal all corners of the reveal. Start by applying tape directly over the Membrane in each corner. Ensure the tape is firmly pressed into place, covering the membrane completely in these areas. Once the corners are secured, continue by stretching the tape around both the front and back of the framing.



5

Applying The Tape To Sill

Repeat this process for the rear edge of the frame, then do the right a left hand side and finish off with the header.

Metal Internal Corner Membrane Installation



1

Internal Corner Layout

For internal corners, the membrane should be installed in two separate sections. This approach prevents the creation of a radius in the corner and reduces the risk of accidental penetrations.



2

Applying The Membrane To Each Face

First, align the membrane tightly into the corner and extend it outwards along the wall. Fix it back to the frame following the methods outlined in the previous instructions.

150mm Overlap



3

Cut The Membrane To Suit

Pull the second section of the membrane into the internal corner and trim it to ensure a 150mm overlap. Securely fix it back to the frame, following the previously described method.



4

Sealing & Taping The Corner

Press the membrane firmly into the corner to prevent any radius formation. Then, bond it back to the first piece of membrane using Double-Sided Tape. Finally, seal the exposed edge with UV Facade Tape.

Wood Frame Installation



1

Staples Guidance

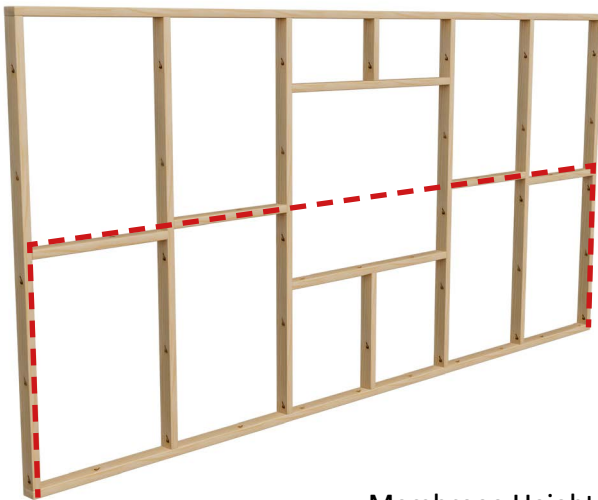
Staples must be galvanised or stainless-steel and at least 12mm wide and a minimum of 1.3mm thick.



2

Wood Framing Preparation

Before installing the Membrane, carefully check the wooden frame for any protrusions or sharp edges like nails or metal strapping that may tear or pierce the membrane surface of the membrane. We would also recommend that all surfaces are clean and dust free.



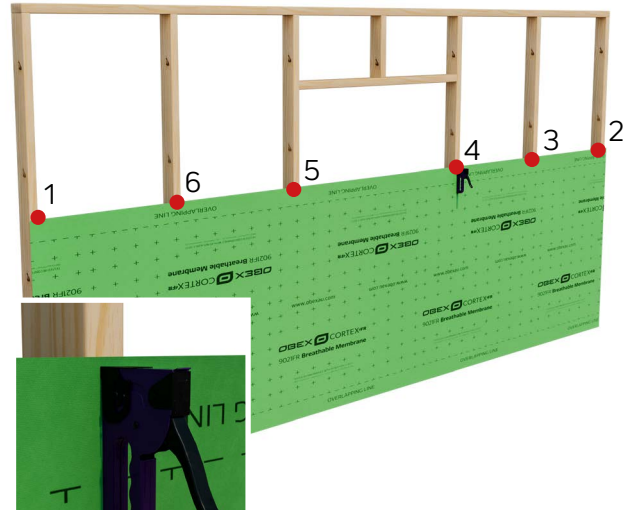
-- Membrane Height

3

Membrane Installation Setting Out

From the bottom of the framing, measure and mark the exact height corresponding to the width of the membrane. This will indicate where the top of the first layer of the Membrane should be installed.

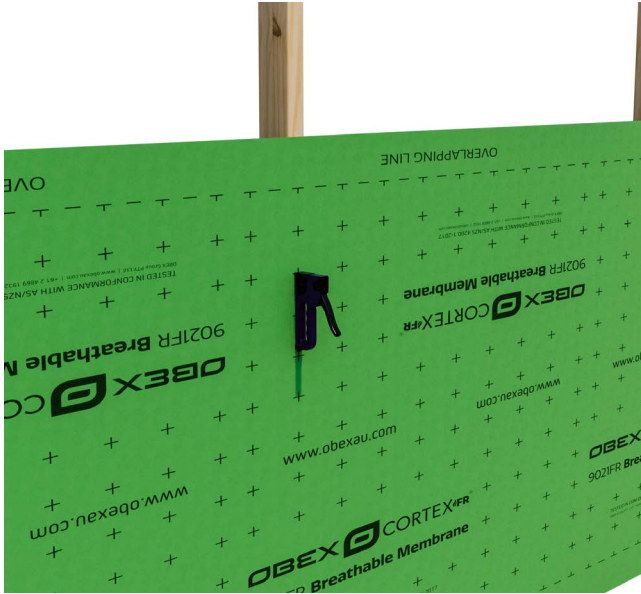
● Staple Positions



4

Fixing Membrane Bottom Edge

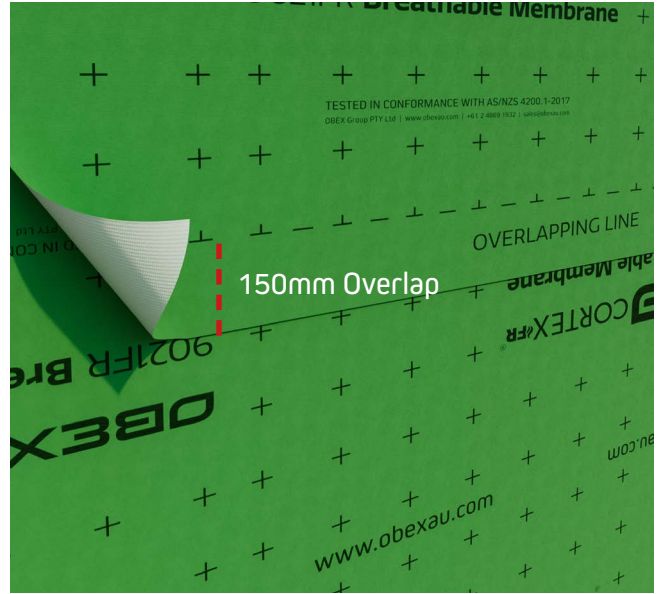
Using a trade rated stapler, secure the top corner of the membrane with 4-6 staples and then roll out the membrane across the studs. If required, trim to length and pull taught and secure the opposite corner in the same way. Continue to secure the top edge at all possible fixing points.



5

Securing the membrane

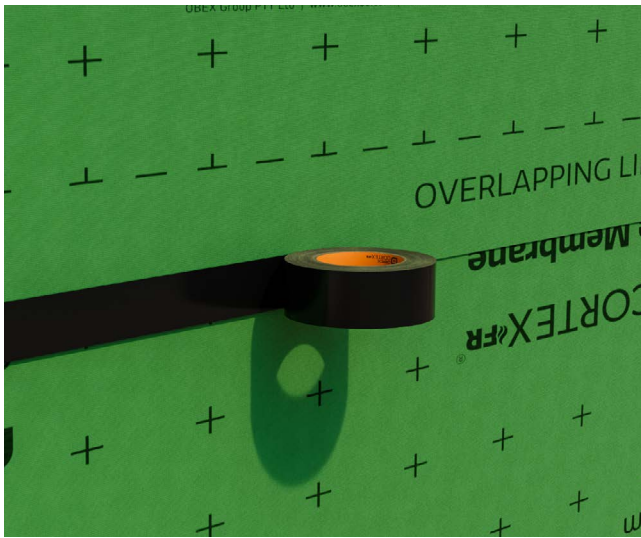
Once the top edge and corners of the membrane have been sufficiently secured, pull the membrane down from the center until taut and secure with 2-4 staples. Then pull taut and fix each bottom corner with a further 2-4 staples. Once the top and bottom edges of the membrane are secured fix the membrane back at each vertical stud with 3 evenly spaced staples.



6

Installing Additional Membrane Layers

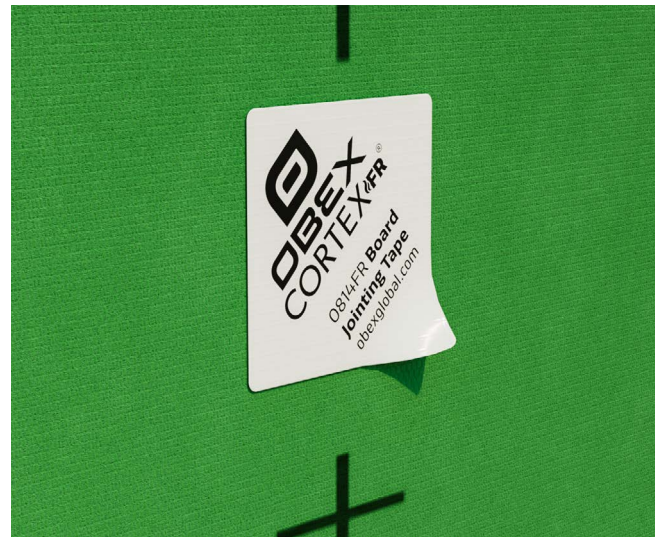
Continue installing the Membrane layers above the first, using the same steps. Ensure each new layer overlaps the one beneath by 150mm, maintaining this consistency for all subsequent layers. This overlap is key for seamless coverage and optimal performance of the membrane system.



7

Membrane Edge Sealing

Once the membranes have been installed seal all vertical and horizontal overlaps with UV Facade Tape. Ensure to apply firm pressure for secure and effective adhesion.

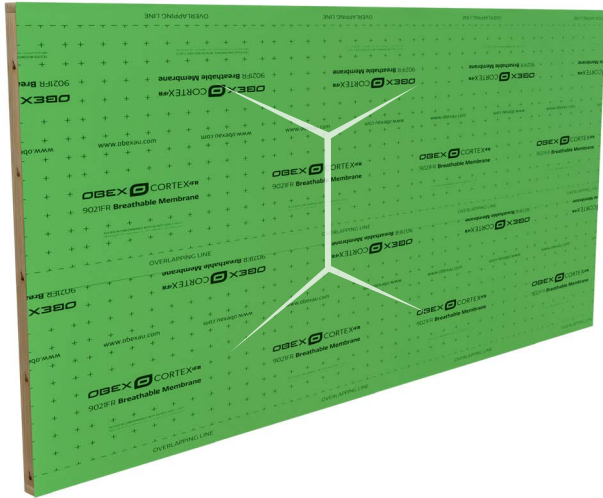


8

Staple Head Sealing

Cut squares of the OBEX CORTEX UV Facade Tape and place over each staple to ensure the maximum level of airtightness and weather resistance.

Wood Window Reveal Dressing



1

Window Reveal Dressing

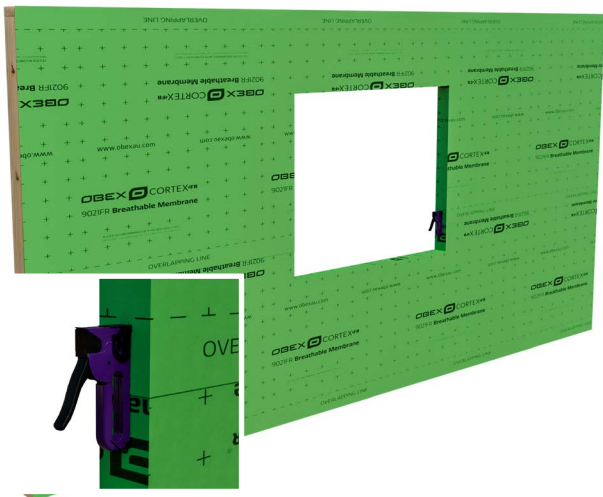
Cut the Membrane from the center of the window area out towards each of the four corners. This will create four flaps that can be neatly folded back into the window reveal.



2

Apply Double Sided Tap To Reveals

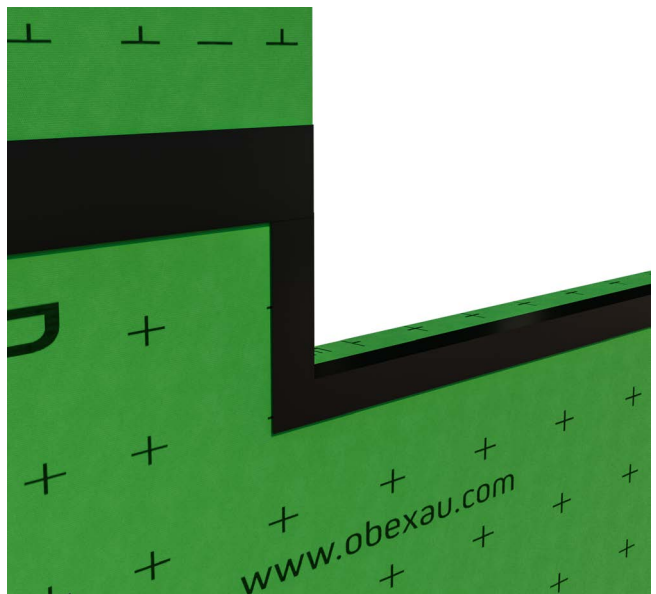
Ensure all four sides of the window reveal are clear and smooth then fold the flaps back into the reveal.



3

Lining The Reveal

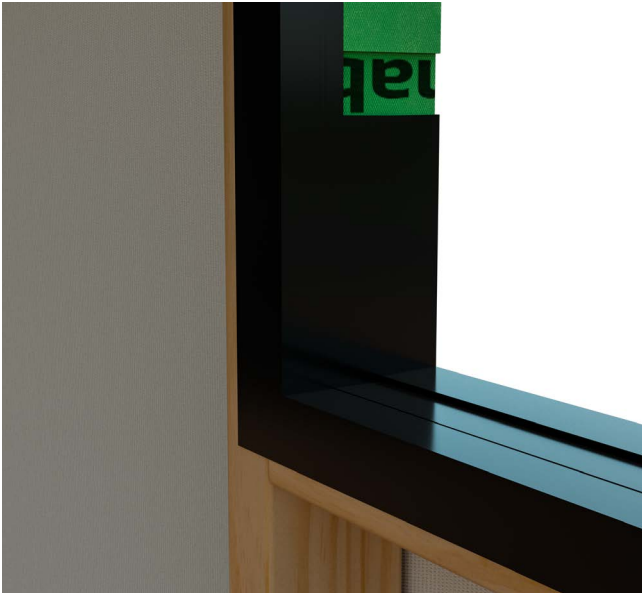
Staple the flaps to the wood, keeping the membrane taught. Secure with staples around the reveal trimming back any excess membrane to align with the back edge of the wooden framing for a neat finish.



4

Sealing The Corners Of The Reveal

The next step is to thoroughly seal all corners of the reveal. Start by applying tape directly over the Membrane in each corner. Ensure the tape is firmly pressed into place, covering the membrane completely in these areas. Once the corners are secured, continue by stretching the tape around both the front and back of the framing.



5

Applying The Façade Tape To Sill

Repeat this process for the rear edge of the frame, then do the right a left hand side and finish off with the header.

Wood Internal Corner Membrane Installation



1

Internal Corner Layout

For internal corners, the membrane should be installed in two separate sections. This approach prevents the creation of a radius in the corner and reduces the risk of accidental penetrations.

2

Applying The Membrane To Each Face

First, align the membrane tightly into the corner and extend it outwards along the wall. Fix it back to the frame following the methods outlined in the previous instructions.

150mm Overlap



3

Cut The Membrane To Suit

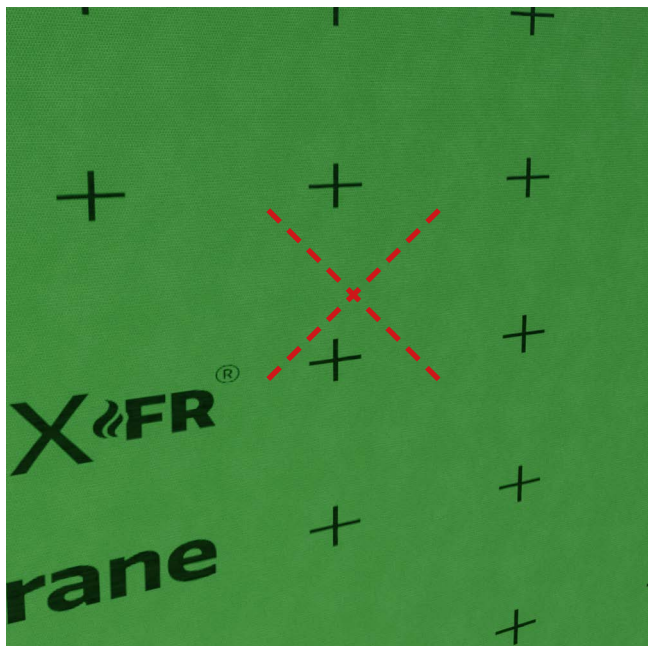
Pull the second section of the membrane into the internal corner and trim it to ensure a 150mm overlap. Securely fix it back to the frame, following the previously described method with staples then seal with patches of UV Facade Tape.

4

Sealing & Taping The Corner

Press the membrane firmly into the corner to prevent any radius formation. Then, bond it back to the first piece of membrane using OBEX Double-Sided Tape. Finally, seal the exposed edge with OBEX UV Facade Tape.

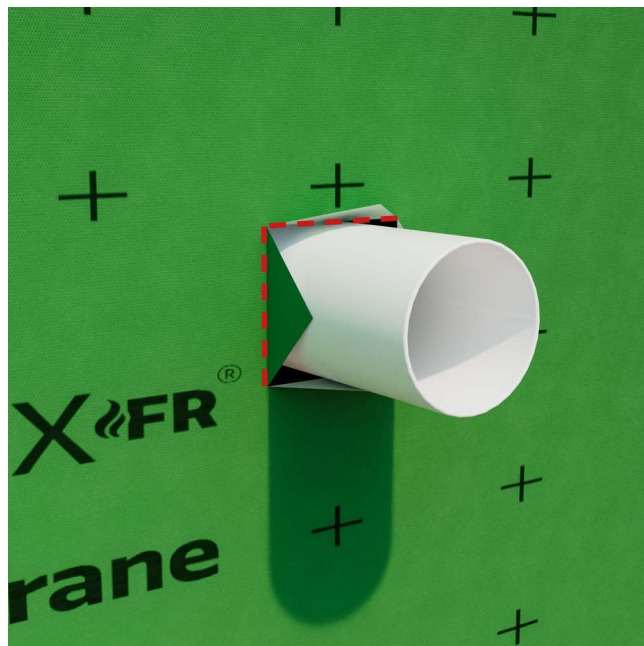
Penetration Sealing



1

Cut For Penetrations

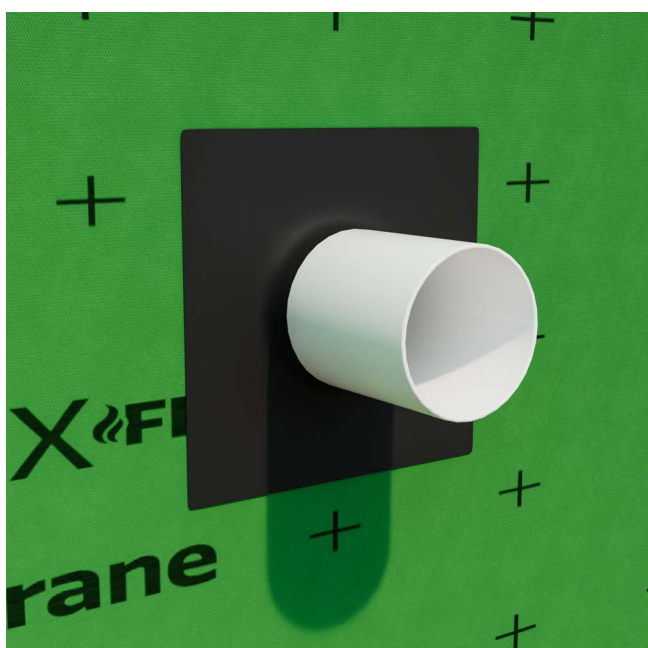
Make two 45-degree slits through the membrane, ensuring they are large enough to accommodate the diameter of the pipe. Be careful not to extend the cuts too far.



2

Push Pipe Through

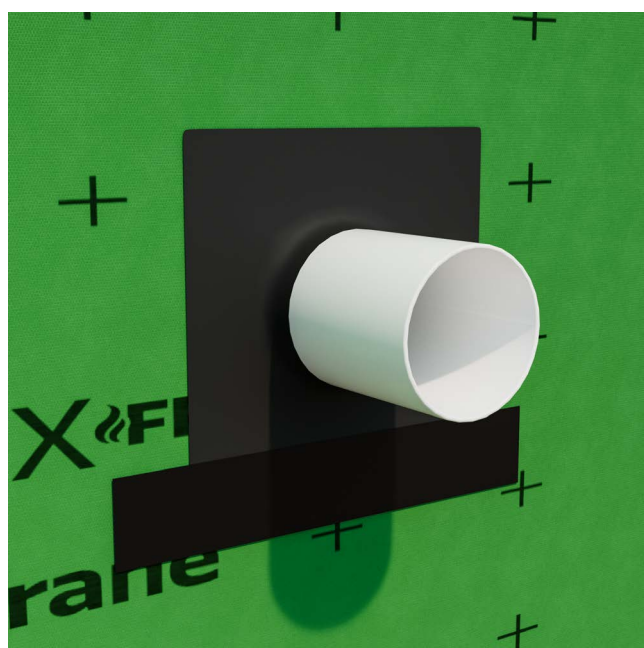
Insert the pipe through the cuts in the membrane, and then trim away any excess material to aid the installation of the EPDM sealing collar.



3

Installing The EPDM Sleeve

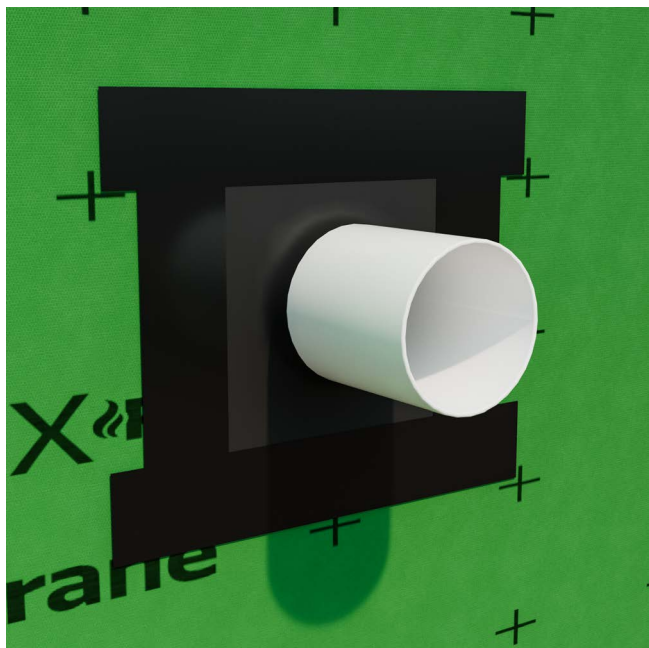
First, make sure the pipe is clean. Then, stretch the EPDM sealing collar over the pipe ensuring a tight fit. Slide the collar up until it sits snugly against the face of the membrane.



4

Sealing Collar Edge Sealing

Begin by applying the UV Facade Tape along the bottom edge of the collar. Ensure that it forms a good bond onto both the collar and the Membrane.

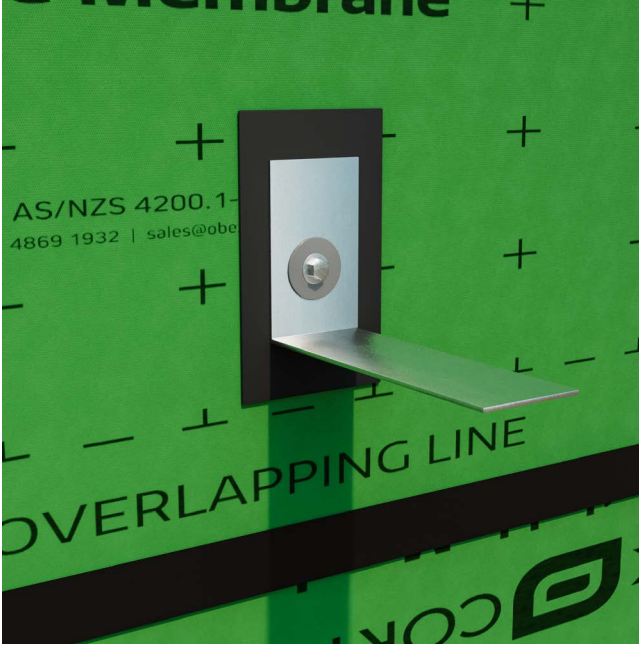


5

Sealing Collar Edge Sealing Cont.

Next, apply the UV Facade Tape Tape to the left and right edges of the collar. Finish by placing a final piece of tape across the top edge. Following this sequence is important to ensure a good seal.

Attachment Sealing



1

Sealing Other Attachments

For attachments fixed to the studs through the membrane we would recommend sealing all edges with UV Facade Tape.

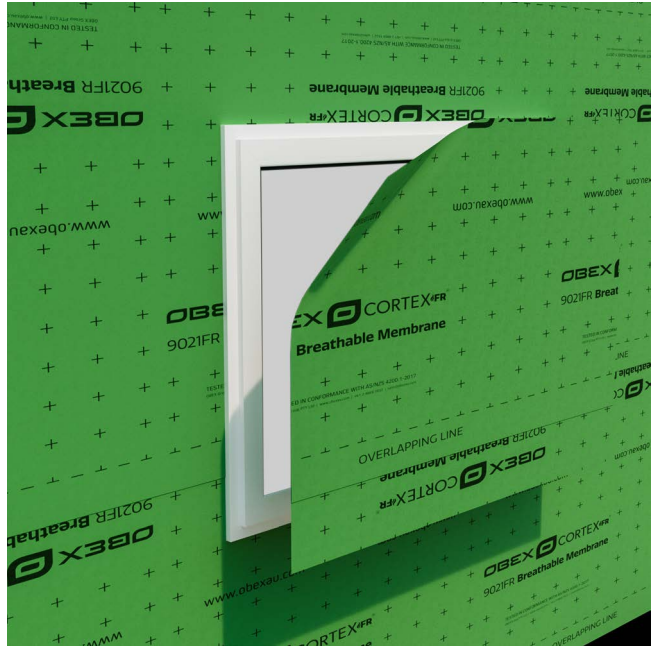
Installation around pre-installed windows



1

Cut around window frame

Cut the membrane around the edge of the window, as close to the frame as possible. Be careful not to cut any underlying EPDM membranes if installed.



2

Remove excess membrane

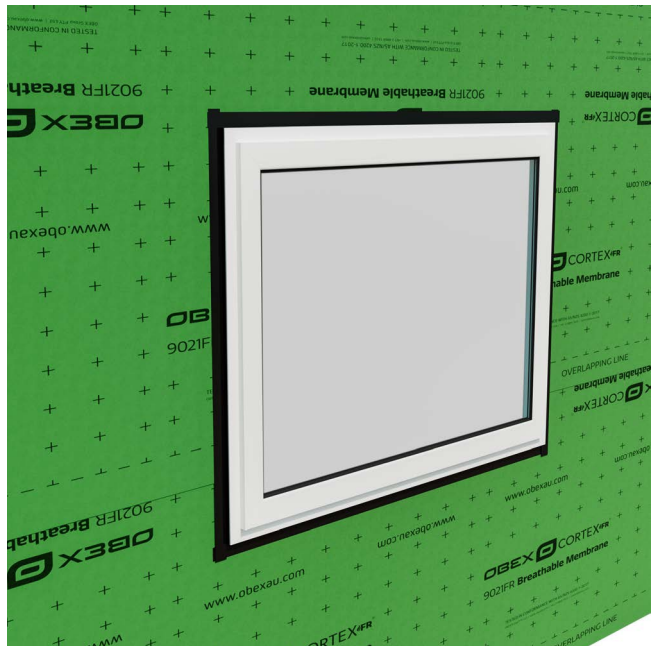
Remove the excess so the breathable membrane fits flush around the window frame.



3

Seal to the frame

Apply OBEX CORTEX jointing tape around the edges of the membrane starting with the base. Ensure a minimum of 20mm bond to the window frame. Add a slit to the end so the tape can overlap the vertical joints as seen.



4

Repeat sides then top.

Repeat step 3 on the sides of the frame and lastly the top, completing the seal around the window. Continue to seal any overlaps or penetrations in the membrane as previously shown in this guide.



OBEX Group PTY Ltd. Unit 8-13 Lyell St, Mittagong, NSW 2575
Call: +61 2 4869 1932 | **Email:** sales-au@obexglobal.com | **Visit:** www.obexglobal.com/au
© OBEX Group PTY Ltd 2023, All Rights Reserved. ACN: 161 353 733