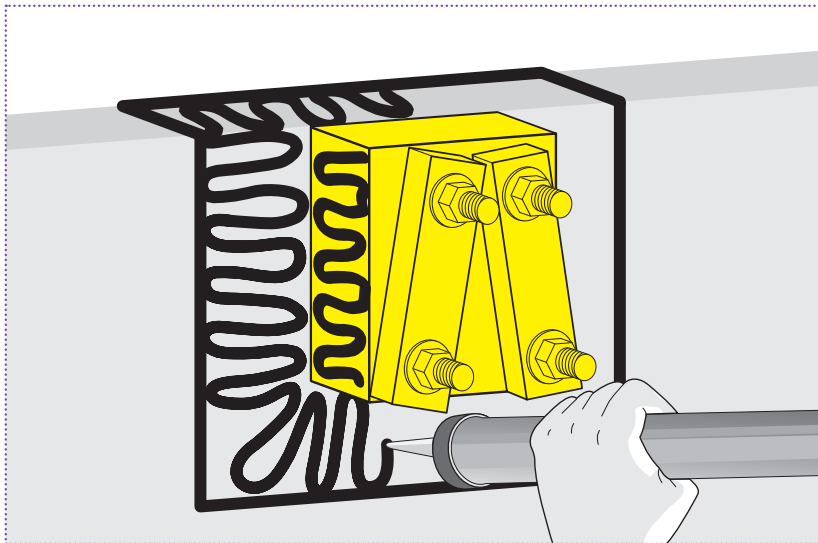




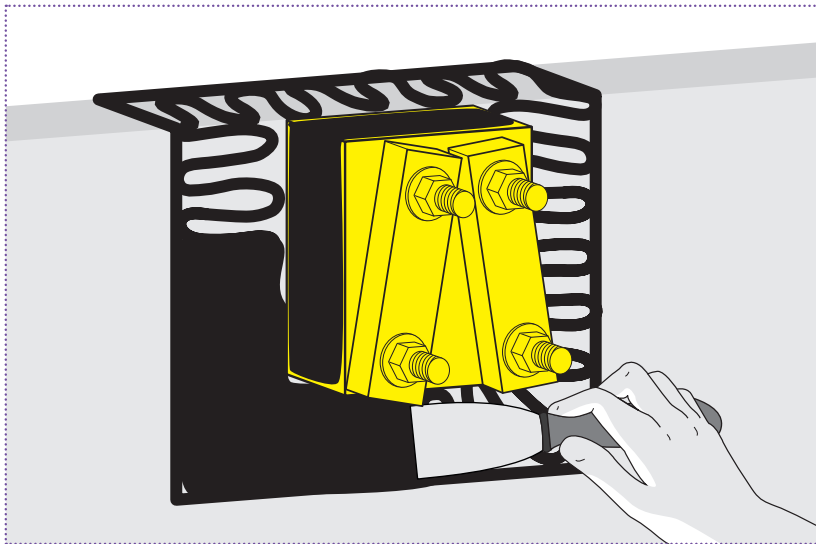
# HOW TO INSTALL... Cortex Pre-Moulded EPDM Sleeves - Balcony Bracket

[www.obexuk.com](http://www.obexuk.com)

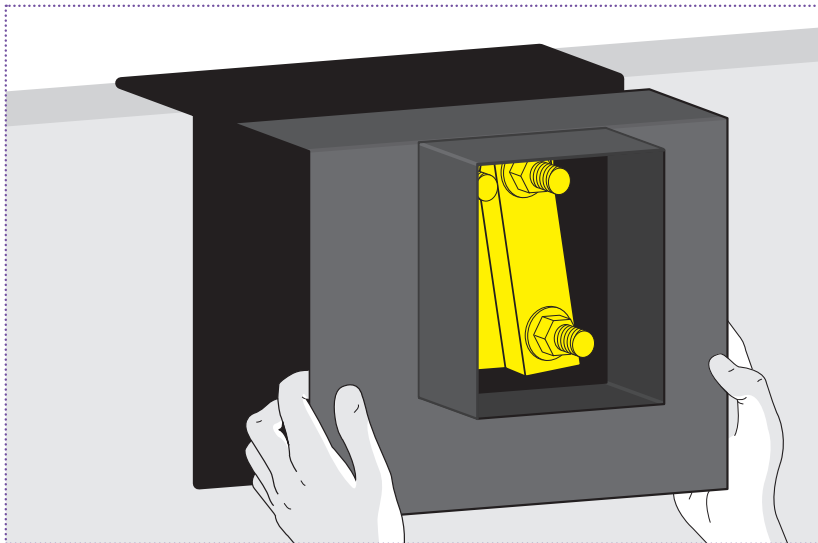




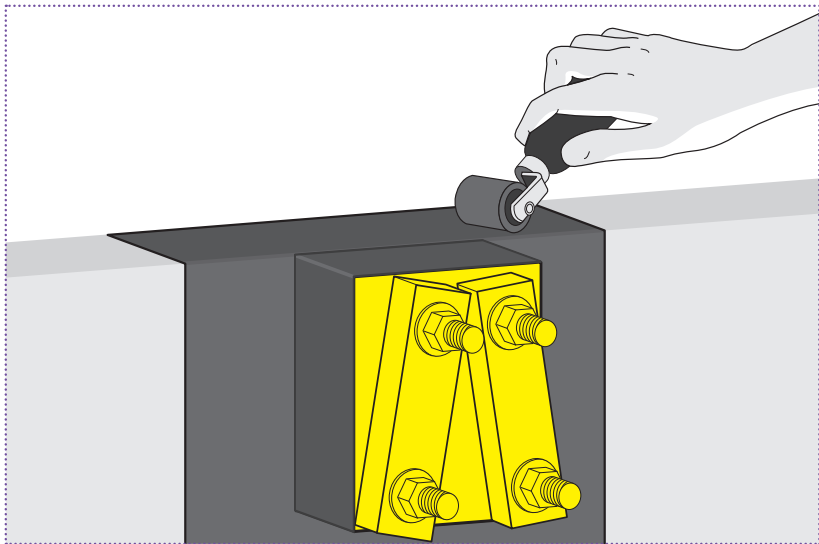
Apply Cortex Paste Adhesive around the Balcony Bracket to give a full area coverage.



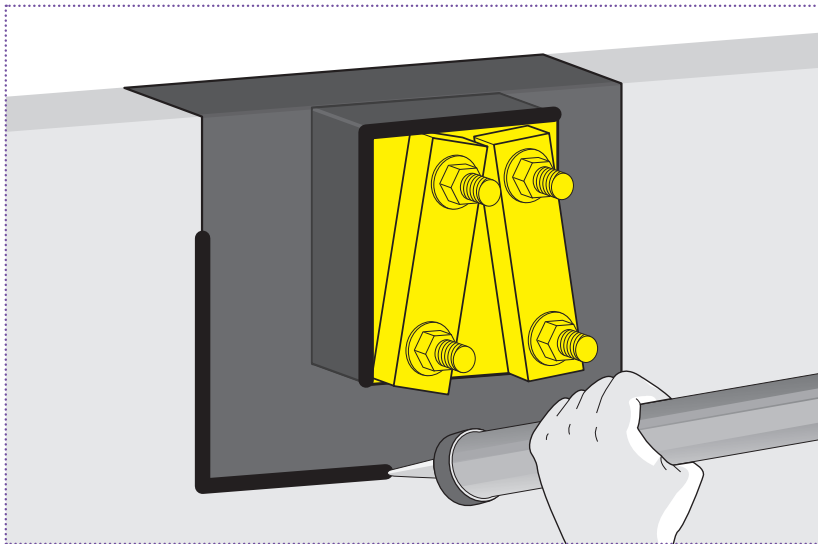
Spread out the paste adhesive to ensure full coverage of where the EPDM sleeve will be bonded using a paste adhesive spreader.



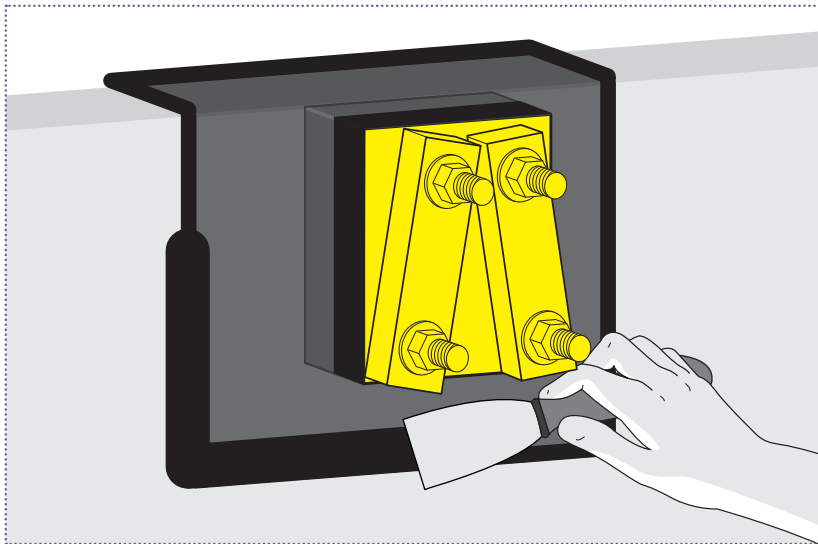
Push the Cortex Pre-Moulded EPDM sleeve over the Balcony Bracket.



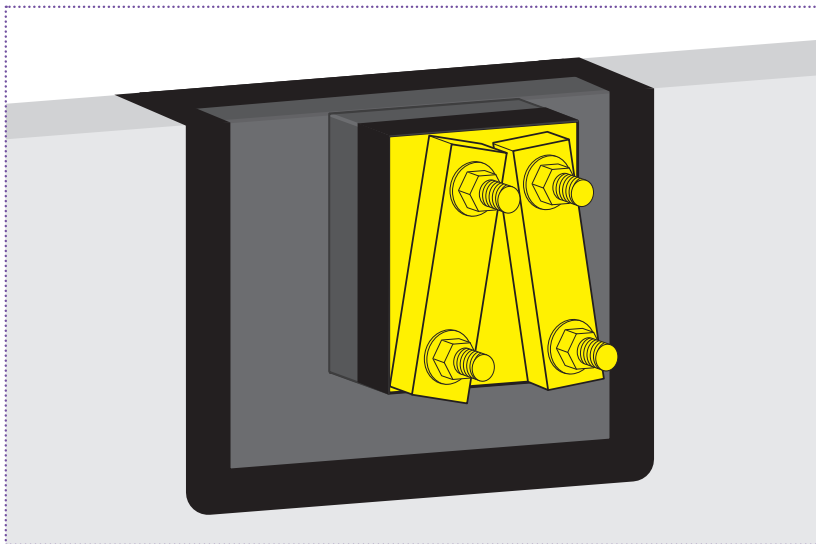
Roll firmly with a seam roller to ensure maximum bond.



Apply Cortex Paste Adhesive around the edges of the sleeve with one bead of paste adhesive.



Tool off the paste adhesive with a spreader to ensure no open edges.



Finished EPDM Sleeve installed and sealed with Cortex Paste Adhesive.





---

**CORTEX**<sup>®</sup>  
EPDM membrane system



For technical assistance, call **01905 337800**, email **[sales@obexuk.com](mailto:sales@obexuk.com)**  
or visit **[www.obexuk.com](http://www.obexuk.com)**