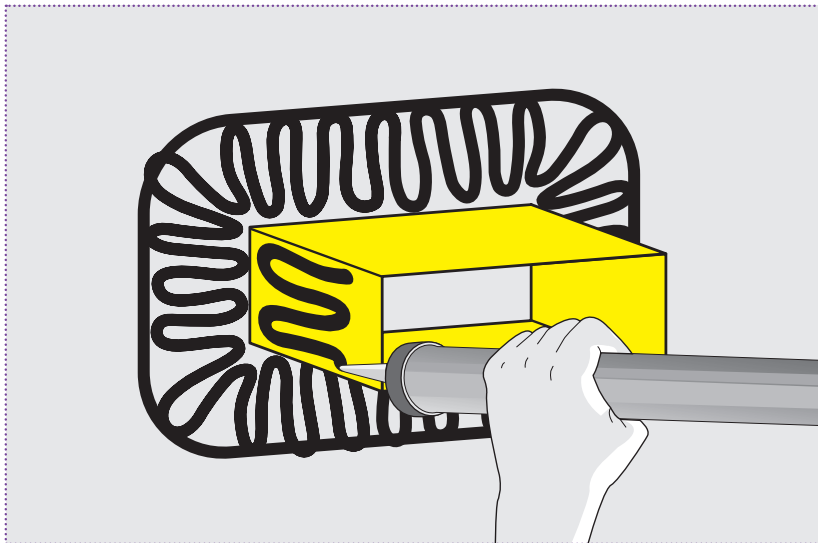




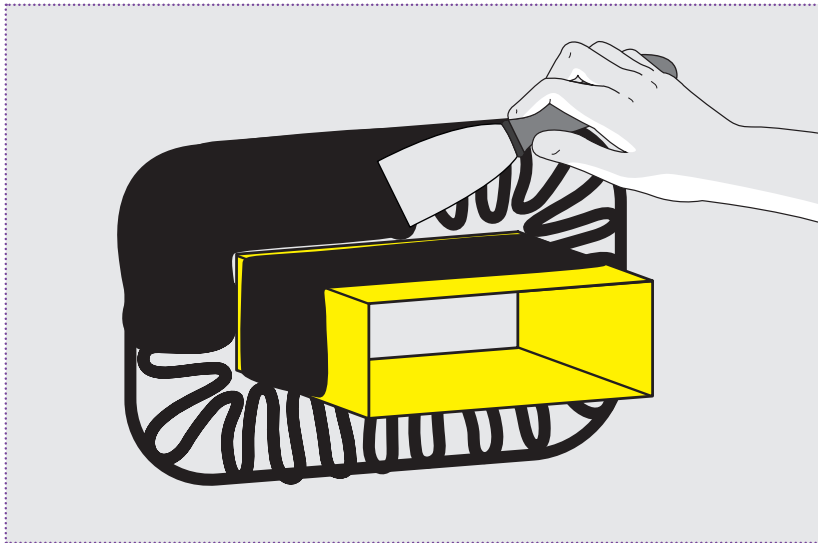
HOW TO INSTALL... Cortex Pre-Moulded EPDM Sleeves - Ventilation Duct

www.obexuk.com

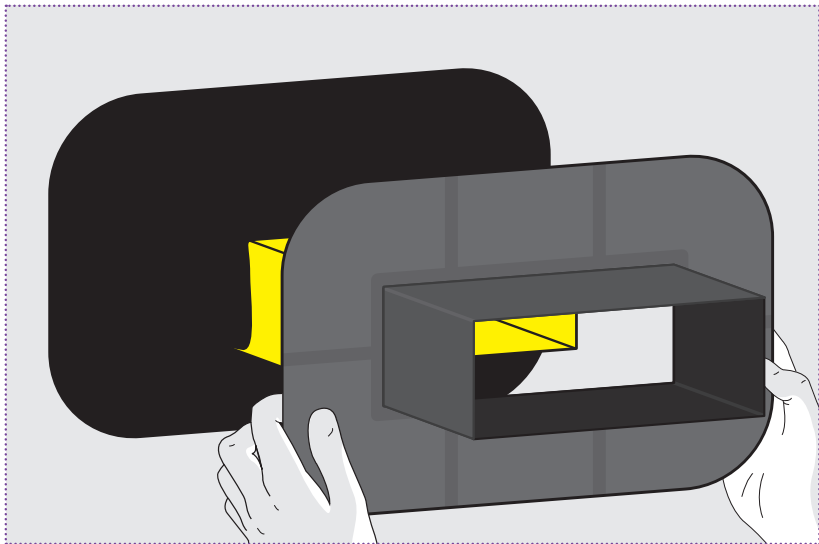




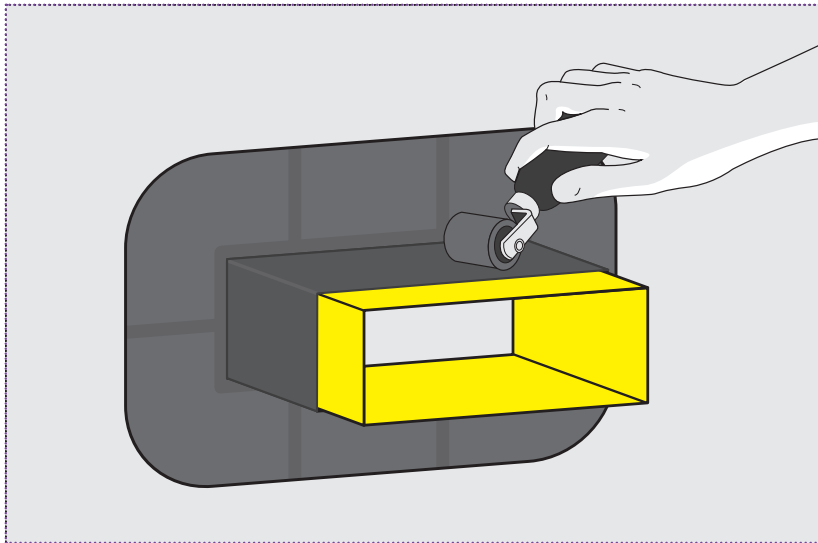
Apply Cortex Paste Adhesive around the Ventilation Duct to give a full area coverage.



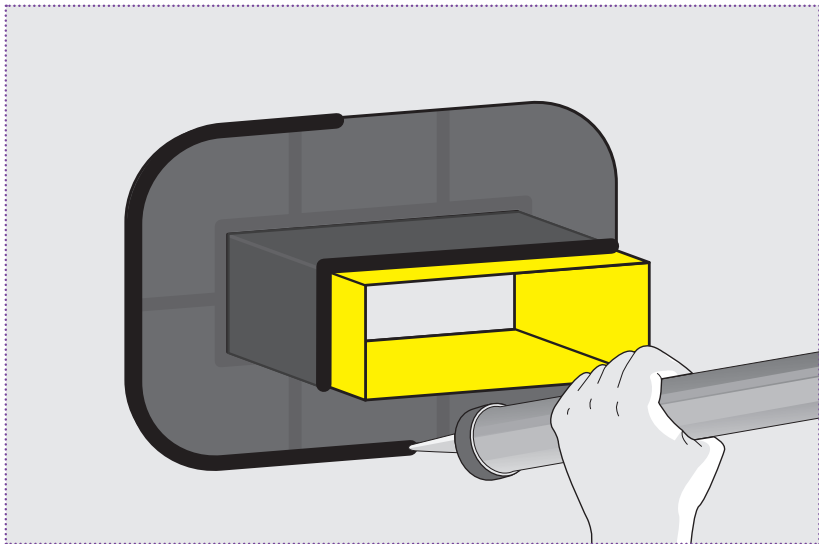
Spread out the paste adhesive to ensure full coverage of where the EPDM sleeve will be bonded using a paste adhesive spreader.



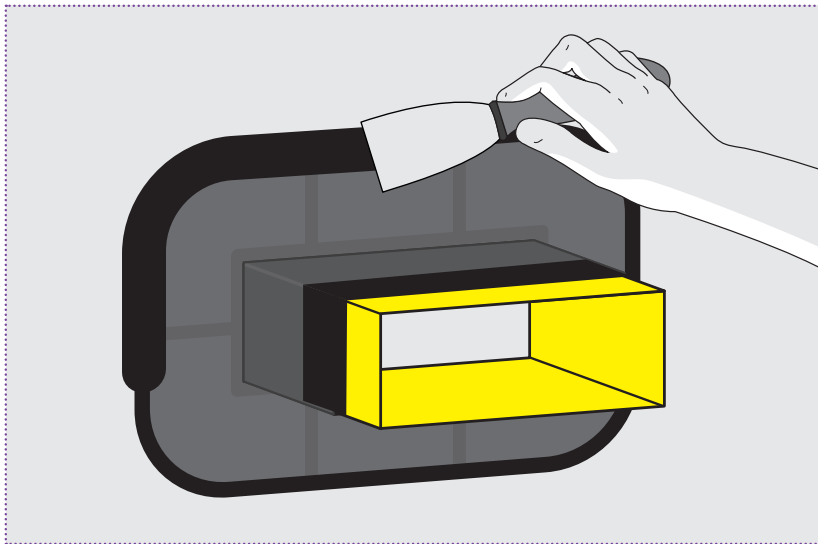
Push the Cortex Pre-Moulded EPDM Sleeve over the Ventilation Duct.



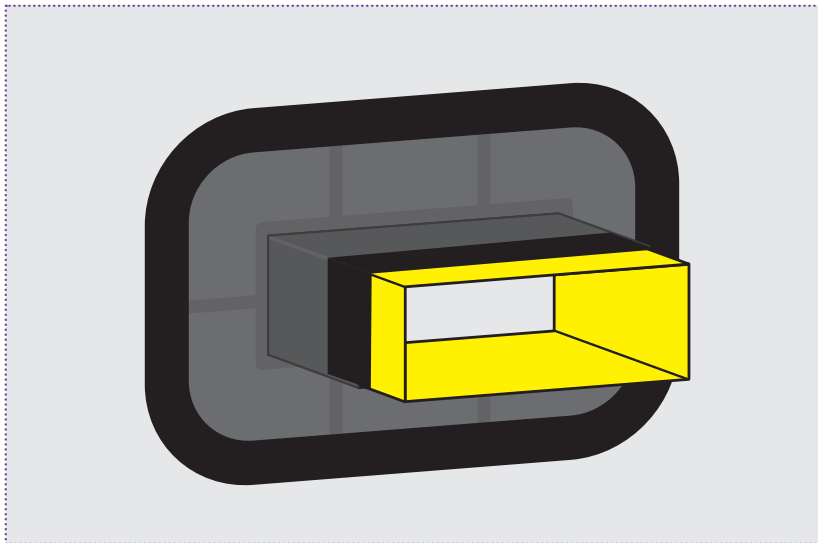
Roll firmly with a seam roller to ensure maximum bond.



Apply Cortex Paste Adhesive around the edges of the sleeve with one bead of paste adhesive.



Tool off the paste adhesive with a spreader to ensure no open edges.



Finished EPDM sleeve installed and sealed with Cortex Paste Adhesive.



CORTEX[®]
EPDM membrane system



For technical assistance, call **01905 337800**, email **sales@obexuk.com**
or visit **www.obexuk.com**