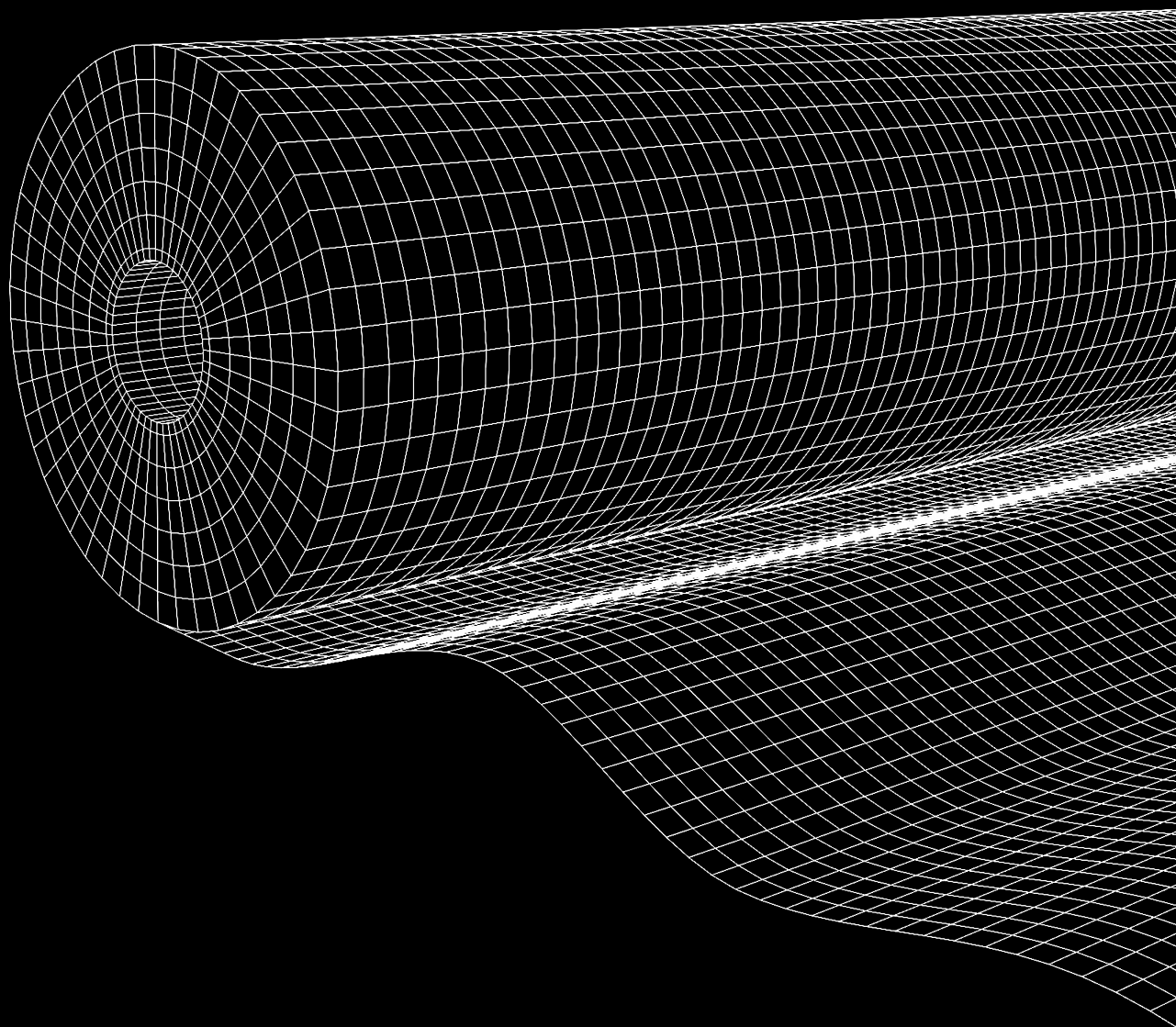


 INSTALLATION GUIDE

OBEX  CORTEX<sup>®</sup> 

# RapidTray<sup>®</sup> DPC & Cavity Tray System Class A



 OBEX<sup>®</sup>

VERSION: 01.01.01

## Important Standards Information

### **BS 8215:1991 – Design and Installation of Damp-Proof Courses in Masonry Construction**

**Scope:**

This standard provides detailed guidance on the design, selection, and correct installation of damp-proof courses (DPCs) in brick, block, and stone masonry to prevent rising and penetrating damp.

**Key points relevant to your work:**

DPCs must form a continuous barrier across the full thickness of the wall, including cavities and junctions.

Minimum overlap: 100mm at all joints to maintain continuity and prevent moisture ingress.

DPCs should be fully supported on a bed of mortar and covered by the next course of masonry.

Surfaces must be clean and free from debris before installation.

DPCs should extend through the full width of walls, including any external finishes or cavity insulation.

Guidance includes positioning (e.g., at least 150mm above finished ground level) and junction details (such as at corners, openings, and changes in level).

### **BS 8000-3:2001 – Workmanship on Building Sites – Part 3: Code of Practice for Masonry**

**Scope:**

This is part of the wider BS 8000 “Workmanship” series, setting out best-practice standards for construction quality on site. Part 3 focuses specifically on masonry work.

**Key points relevant to DPCs and your installation guidance:**

DPCs should be laid on a fresh, even bed of mortar and fully supported.

Laps should not be less than 100mm, consistent with BS 8215.

DPCs must be clean, undamaged, and correctly positioned to prevent bridging or displacement.

Surfaces in contact with DPCs should be free from loose material, oil, or other contaminants that could impair performance.

Where DPCs are joined to other membranes or damp-proof systems, continuity must be maintained using suitable sealants or bonding tapes.

## Important Notes

### 1. Cavity Tray Application

- 1a.** It is the responsibility of the user to check compatibility with any surfaces interfacing the RapidTray System.
- 1b.** The RapidTray system is installed with the black side facing upwards/outwards towards the direction of moisture penetration.
- 1c.** The RapidTray system should not be installed below 5°C. Surfaces should be dry, and free of dust, grease and oils etc.
- 1d.** If you have not previously installed the RapidTray system, we strongly advise arranging our FOC on-site installation training before commencing any works. Please note that if installation proceeds without this training, OBEX Protection Ltd will not accept any liability for issues resulting from incorrect installation or system performance.
- 1e.** For applications where the 0241FR RapidTray is face-fixed to blockwork or rough masonry, we recommend using the 0210FR Class A2 Paste Adhesive to seal the top of the RapidTray instead of the 0244FR RapidTray DPC Sealing Tape.
- 1f.** When face-fixing the 0241FR RapidTray to concrete columns or concrete shear walls, ensure the concrete surface is in good condition prior to installation. If the surface is dusty or in poor condition, we recommend either priming the surface with 0787FR Class B Primer or 0786 Spray Primer in the areas where the 0244FR RapidTray DPC Sealing Tape will be applied, or alternatively sealing the top edge using the 0210FR Class A2 Paste Adhesive in place of the primer and sealing tape.
- 1g.** The 0245FR RapidTray Double-Sided Tape creates a very strong, almost instant bond. Ensure that you follow the installation guide and position everything correctly, before removing the release liner from the double-sided tape.

### 2. DPC Application

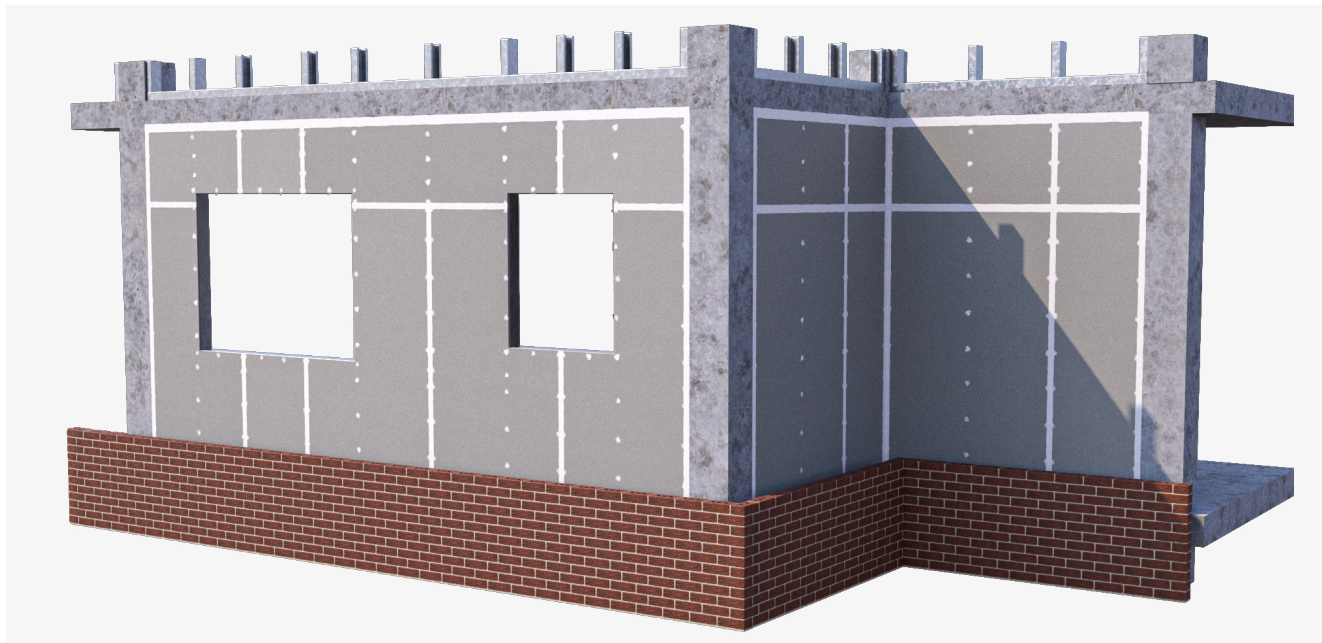
- 2a.** It is the responsibility of the user to check compatibility with any surfaces interfacing the RapidTray System.
- 2b.** The RapidTray system is installed with the black side facing upwards/outwards towards the direction of moisture penetration.
- 2c.** The RapidTray system should not be installed in temperatures below 5°C or in weather conditions unsuitable for the construction of masonry. Surfaces should be clean and free from contaminants.

### 3. Cavity Barrier DPC Application

- 3a.** It is the responsibility of the user to check compatibility with any surfaces interfacing the RapidTray System.
- 3b.** The RapidTray system is installed with the black side facing upwards/outwards towards the direction of moisture penetration.
- 3c.** The RapidTray system should not be installed below 5°C. Surfaces should be dry, and free of dust, grease and oils etc.

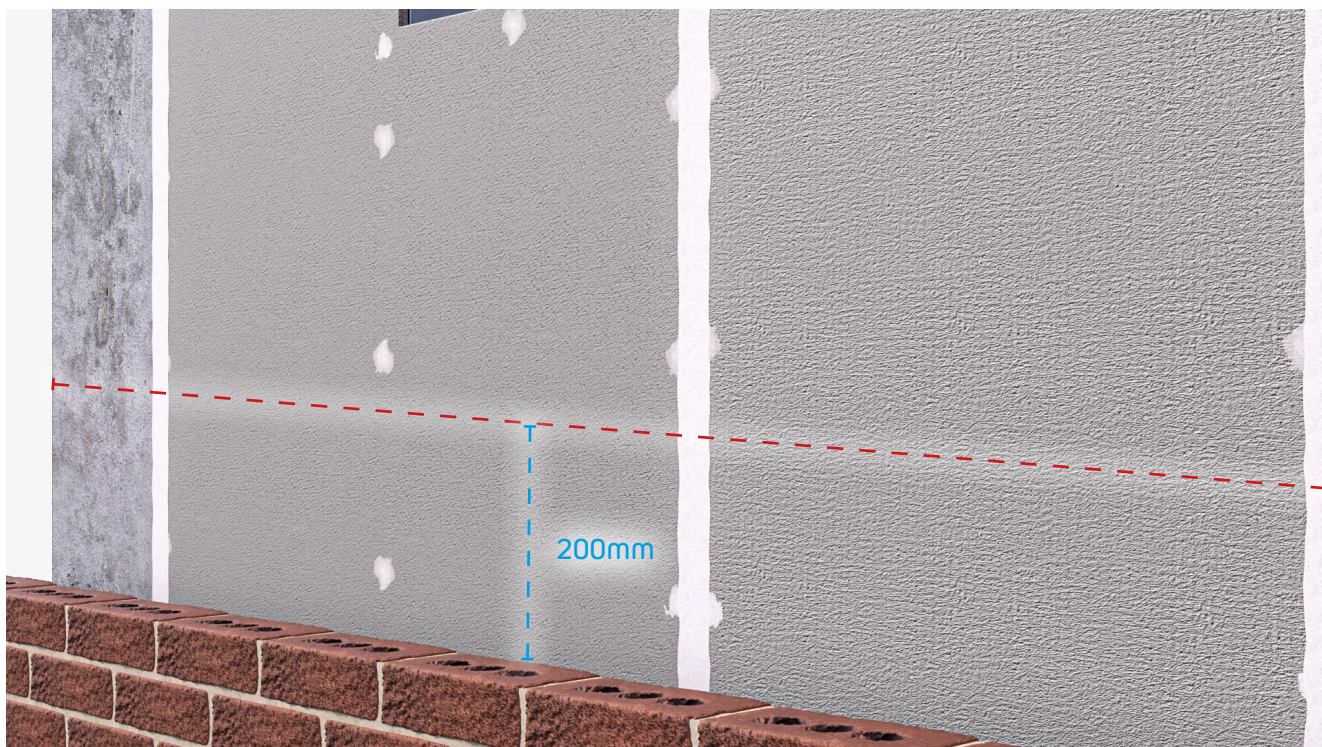


## Cavity Tray - Standard Install



1

Install the building envelope to specification, then lay the brickwork to 200mm below the first specified height of cavity tray.



2

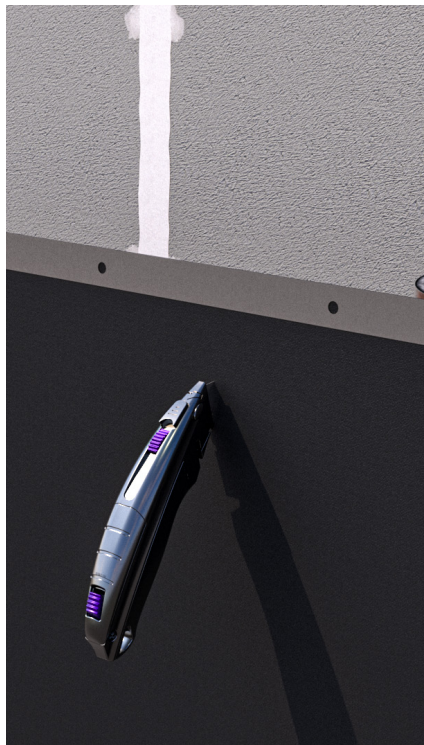
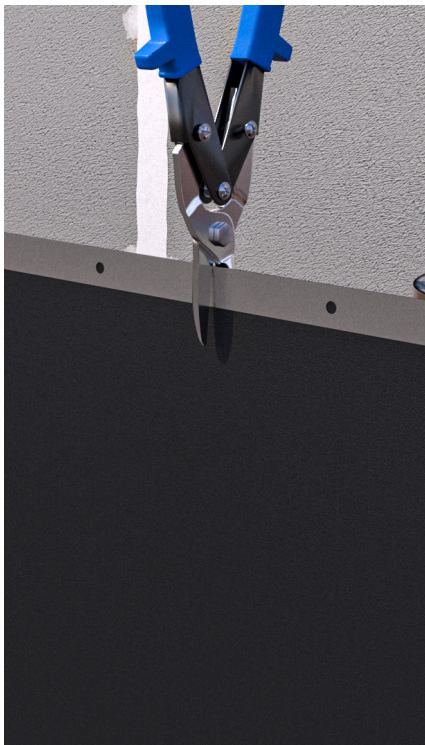
Draw a line on the inner leaf, 200mm above the brickwork height.





3

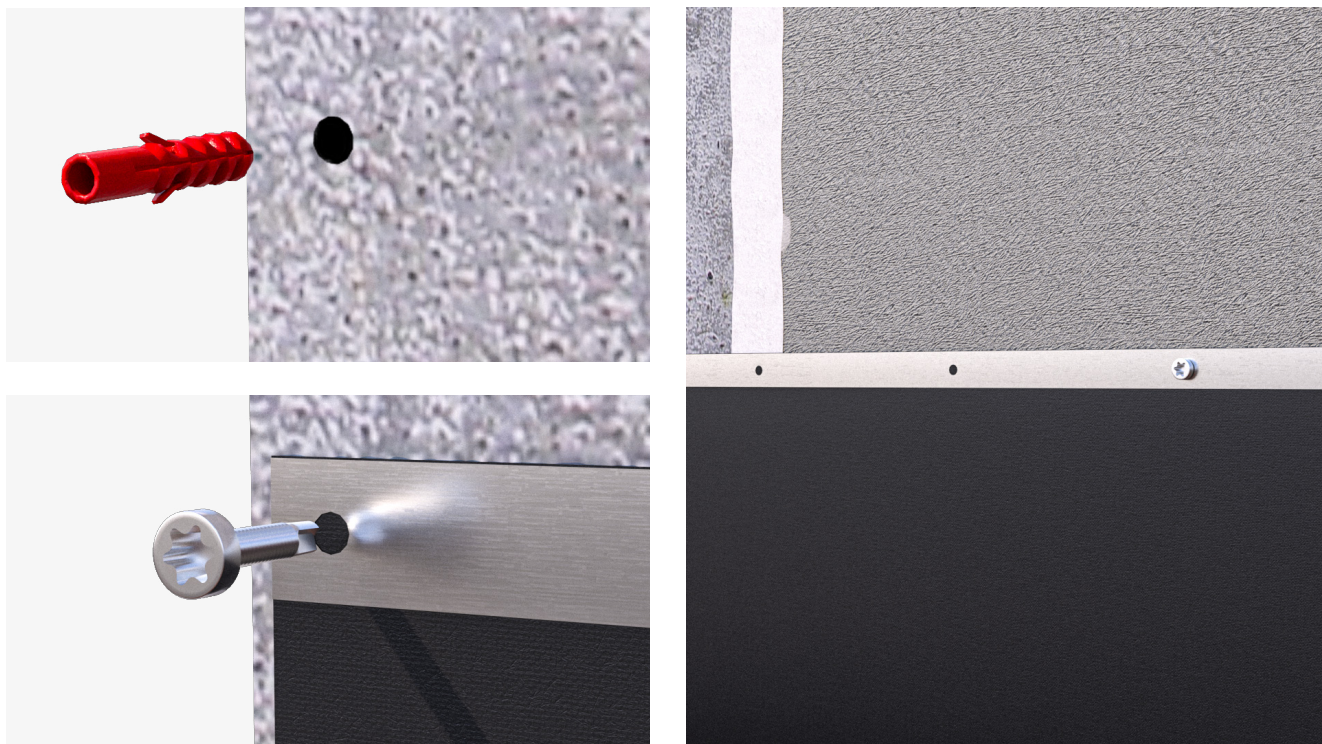
Roll out enough OBEX CORTEX RapidTray to cover the working area.



4

Cut the membrane to length using snips and a knife or membrane shears.

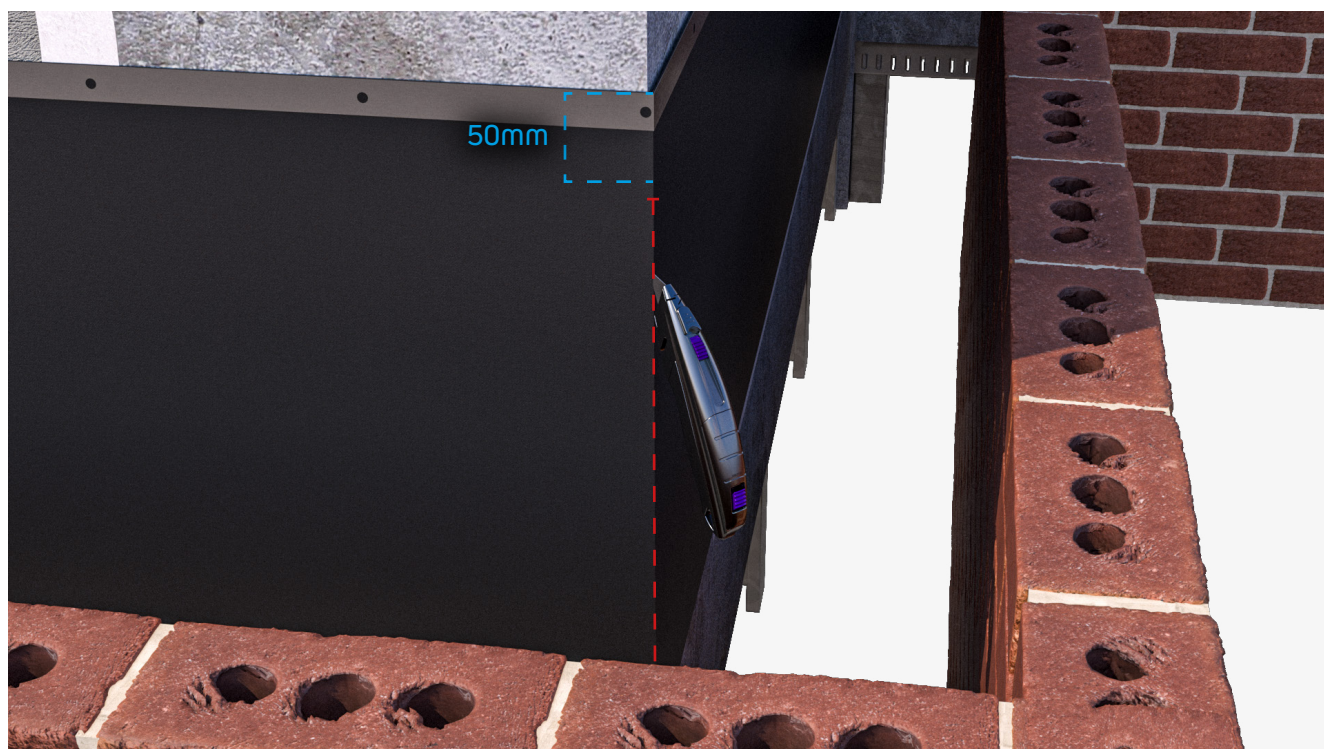




5

Fix the RapidTray in place with 0246FR RapidTray DPC Fixings. Ensure the maximum distance between screws is 600mm. Pre-drilled holes are set every 150mm for easier installation.

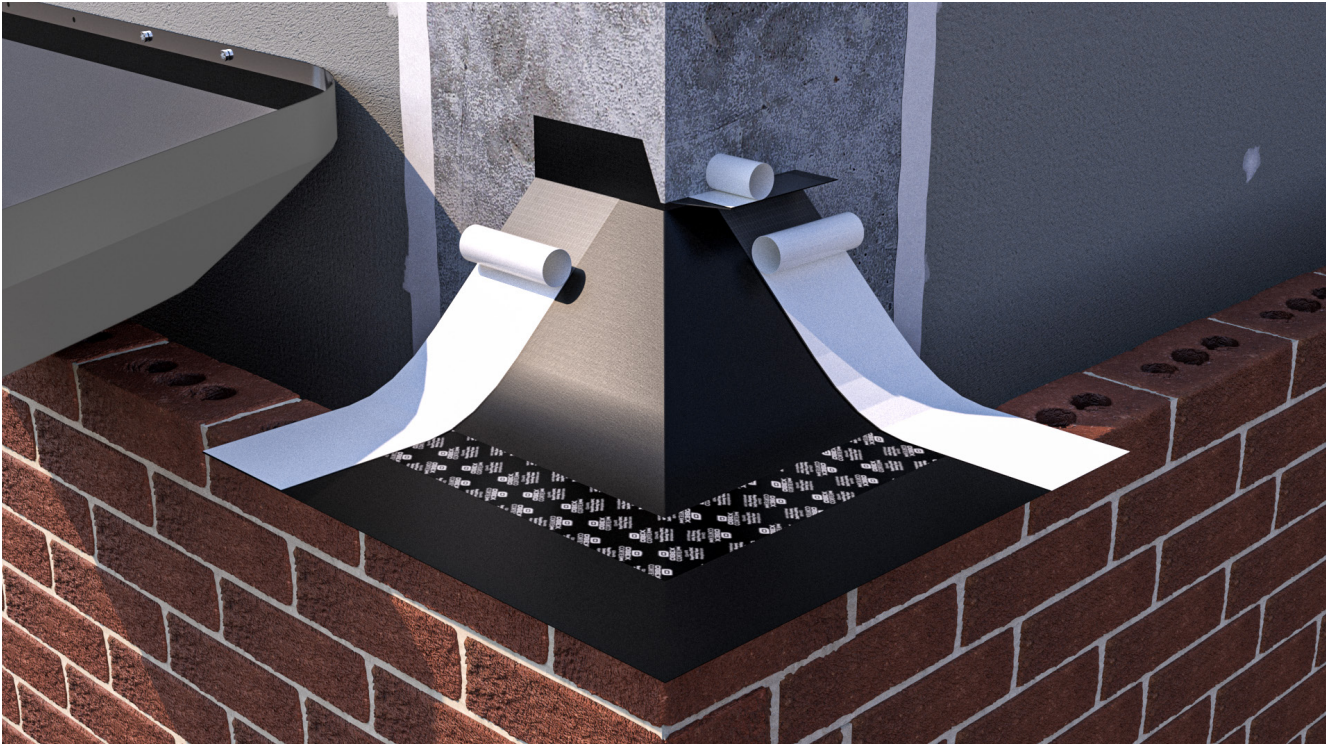
**For concrete installation:** Drill a 6mm hole, Insert 5mm red plug and push in flush, Fix with 0246FR RapidTray DPC Fixing



6

For external corner installation, start by folding the membrane around the corner, creasing the metal strip can aid with this, and then cut down on the apex of the corner, starting 50mm down from the top.





7

Ensure there is a screw through the metal strip at minimum of 600mm from the corner. Pull the main membrane back out of the way, then install the OBEX CORTEX 0242FR RapidTray External Corner. Remove the backing from the rear of the corner first and adhere to the wall, then repeat for the tape on the front face. Remove one strip at a time for easier bonding and positioning.

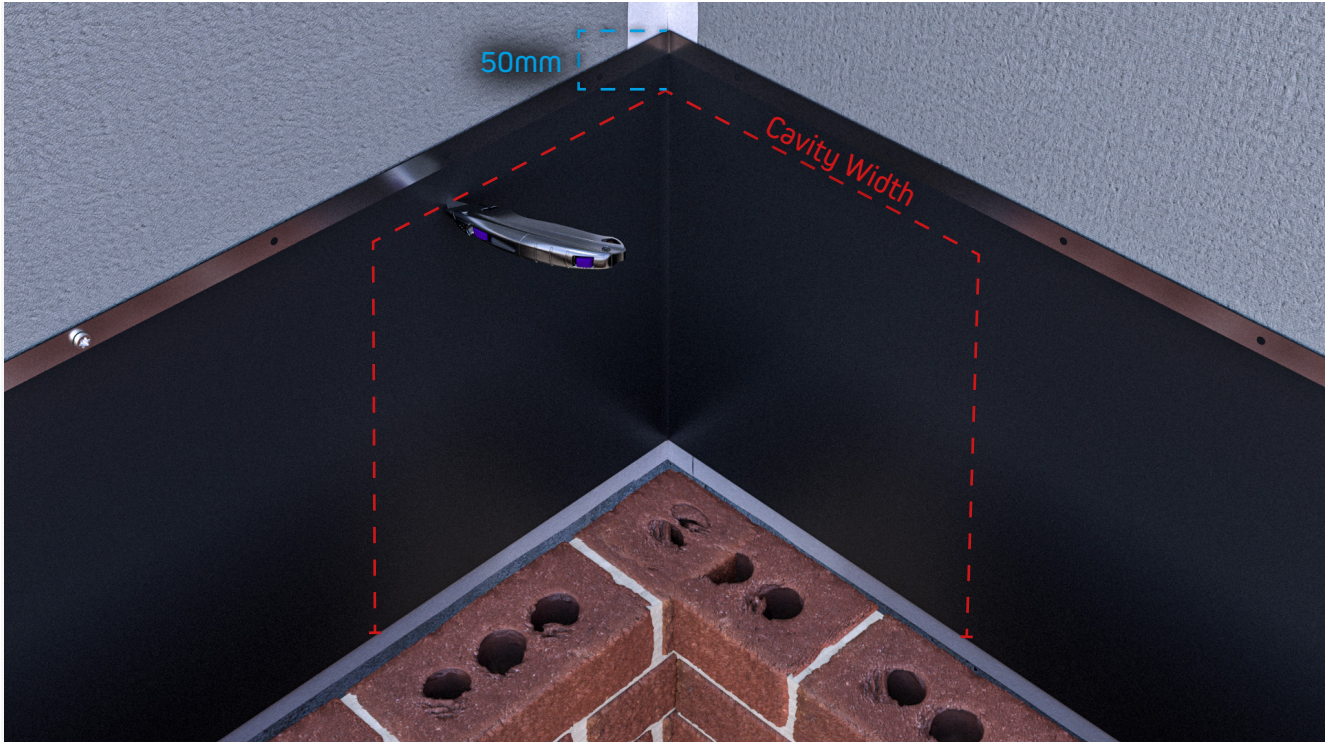
Note: The 0245FR Double-Sided Tape creates a very strong, almost instant bond, so ensure everything is positioned correctly before bonding together.



8

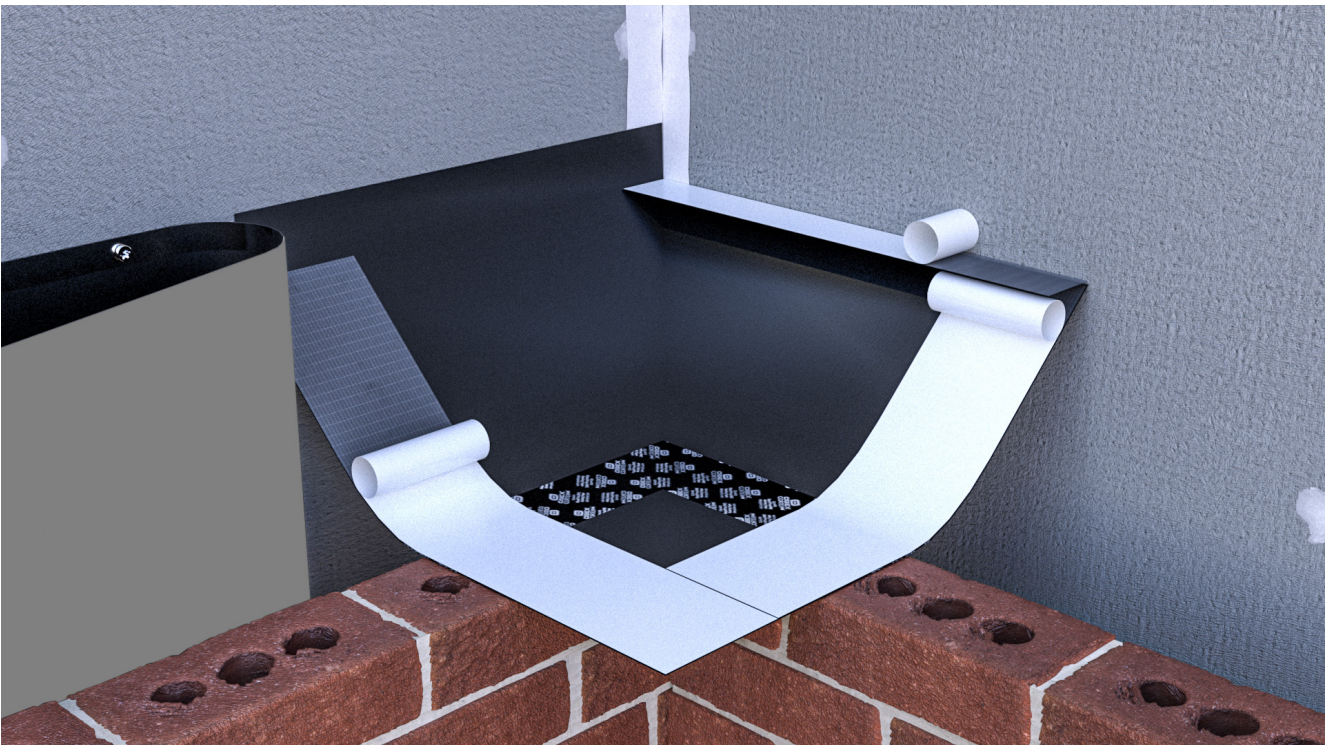
Fold the membrane back over the corner piece, and using a silicone roller apply pressure to bond the two pieces together.





9

For internal corners, start by cutting down the membrane in the corner, starting 50mm from the top. Then cut the width of the cavity on both sides.

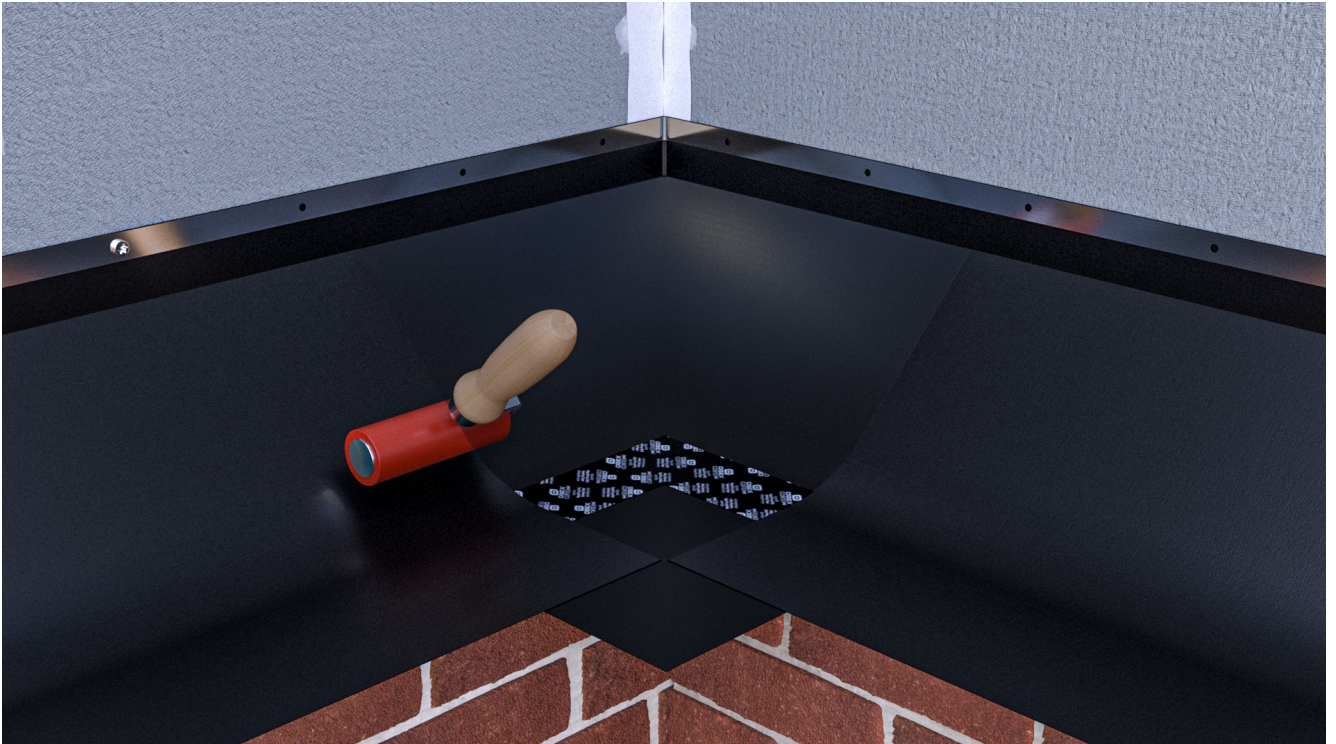


10

Install the OBEX CORTEX 0243FR RapidTray Internal Corner. Start by removing the adhesive strip backing on the rear of the corner, then adhere to the wall. Then remove the adhesive strip backing on the front face of the corner. Remove one strip at a time for easier bonding and positioning.

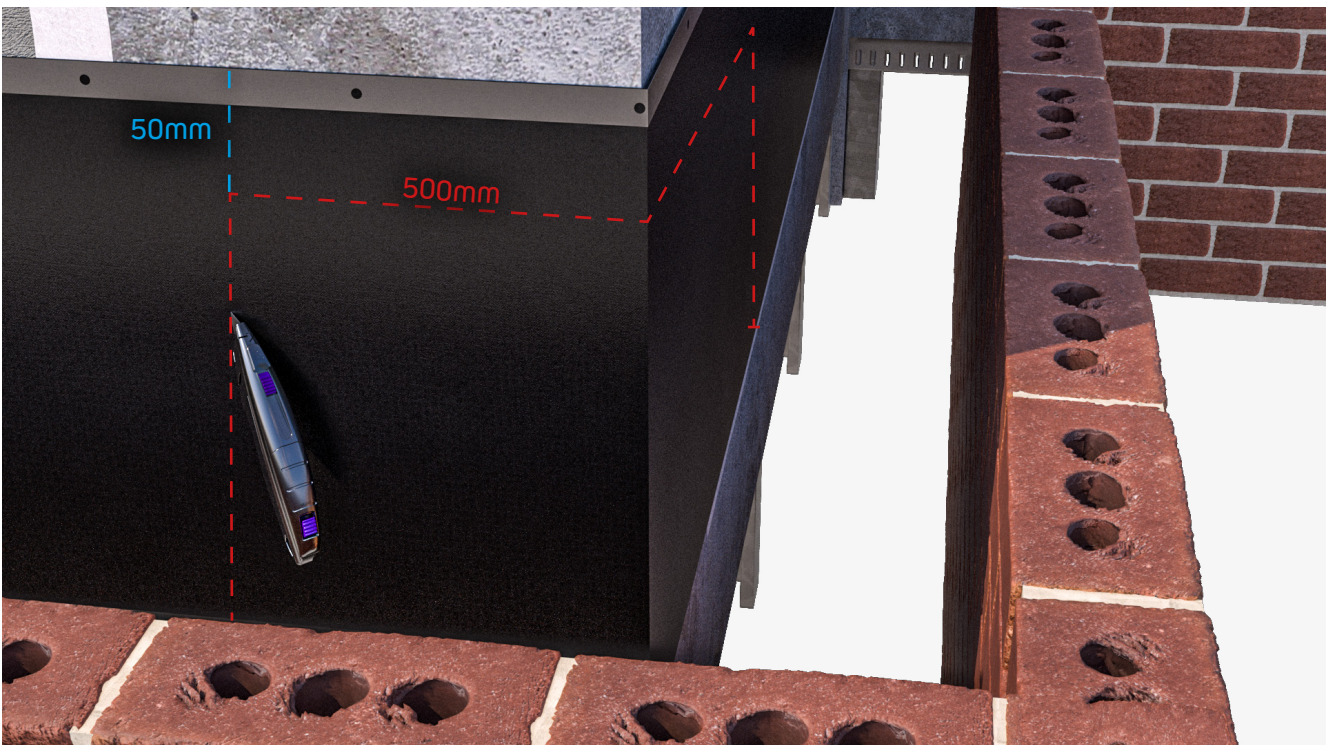
Note: The 0245FR Double-Sided Tape creates a very strong, almost instant bond, so ensure everything is positioned correctly before bonding together.





11

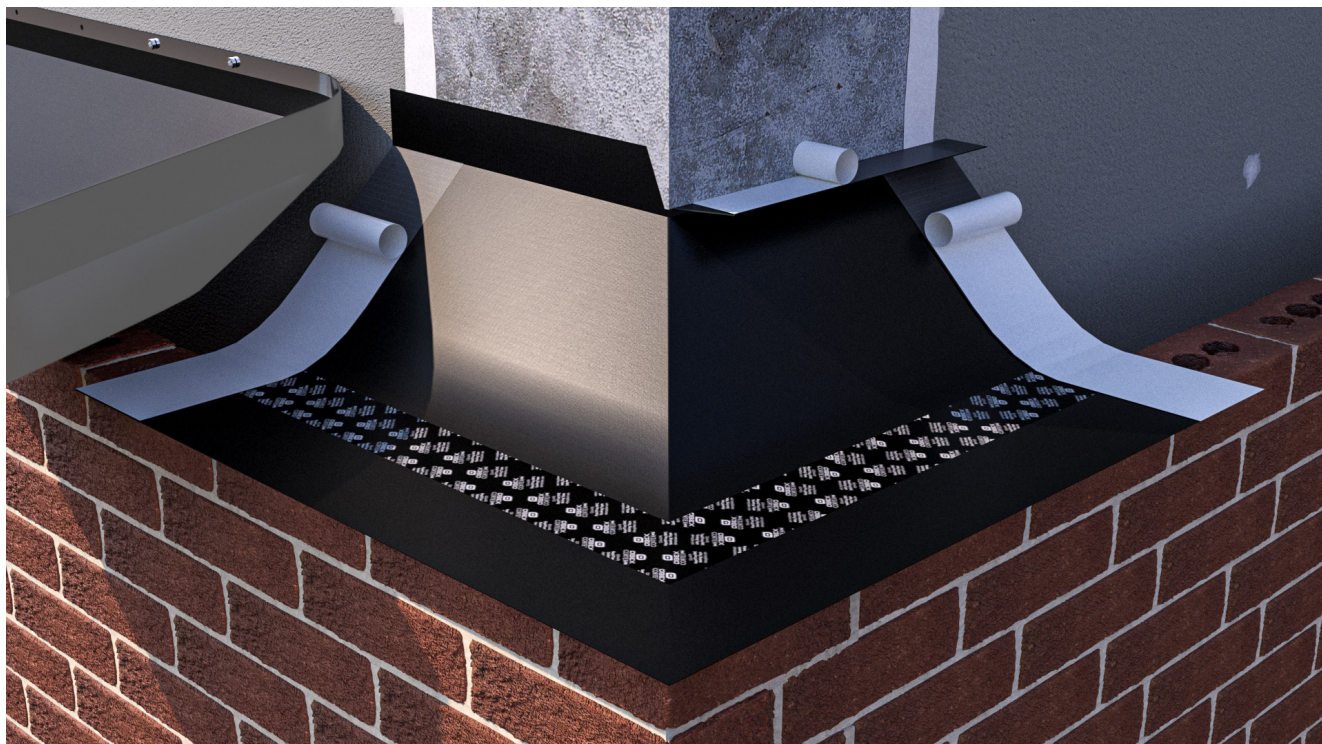
Fold the main RapidTray membrane back over the internal corner, then roll with a silicone roller as per step 8 to ensure a strong bond.



12

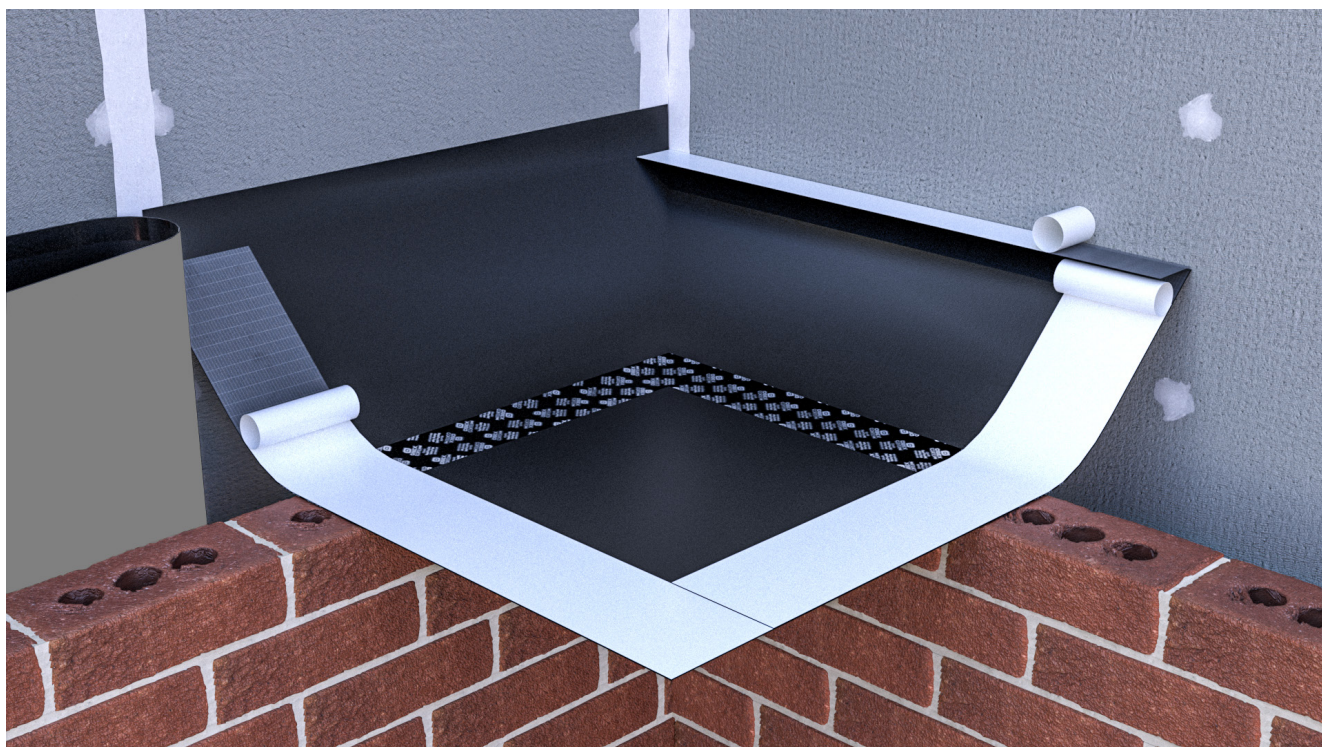
To install the XL version of OBEX CORTEX 0242FR RapidTray External Corner, start by cutting horizontally 50mm down from the top of the RapidTray Membrane and cut 500mm from the apex of the corner. Then cut down to the bottom edge of the RapidTray membrane. Repeat on the other side of the corner. (Cut as per the red lines shown above)





13

Install the external corner as per instructions in steps 7 & 8.



14

To install the XL version of OBEX CORTEX 0243FR RapidTray Internal Corner, follow steps 9 & 10.





15

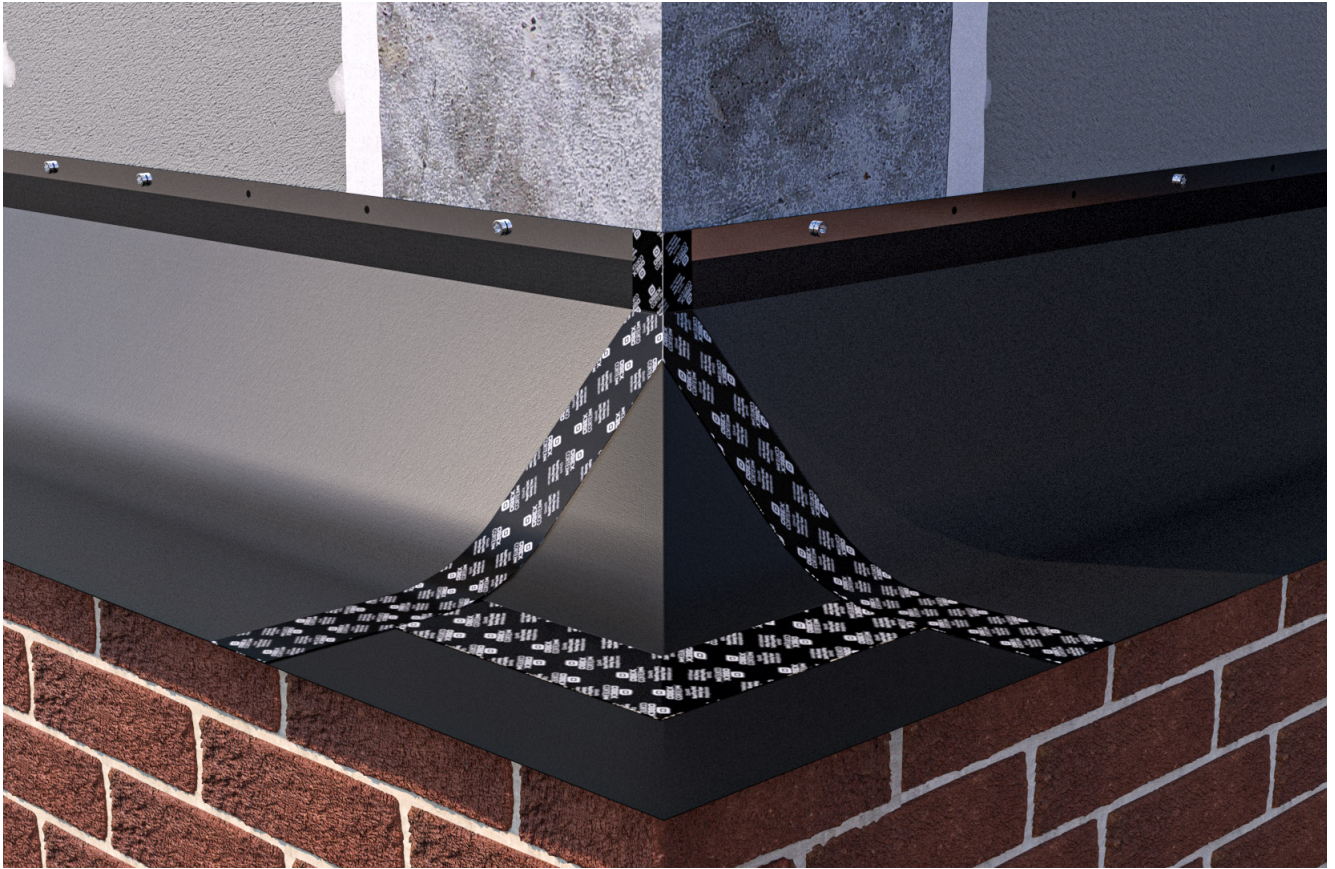
Complete the screws installation, continuing to ensure 600mm maximum spacing between screws.



16

Seal all joints between RapidTray and corners with OBEX CORTEX 0244FR RapidTray DPC Sealing Tape.

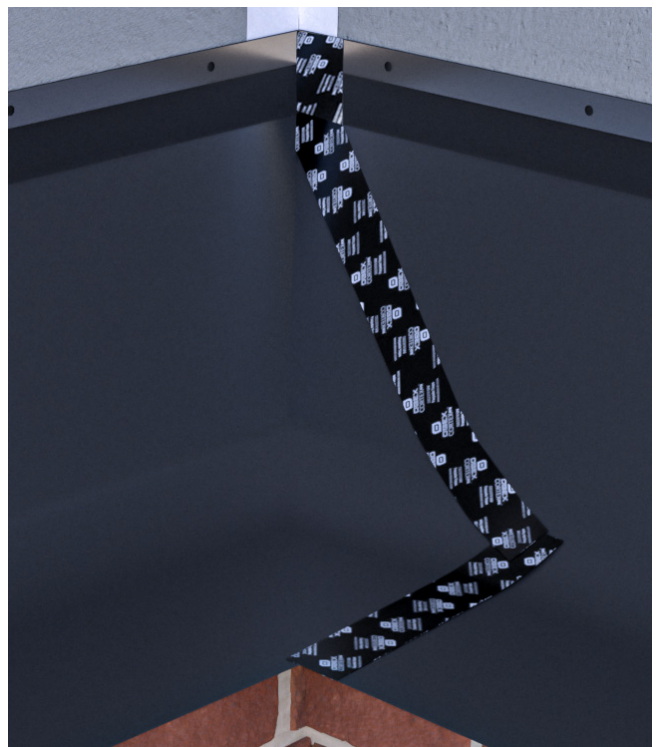






17

Alternatively for internal corners, the membrane can be folded over instead of using a pre-formed corner. To start with install the membrane as per previous instructions, then lift up the corner.

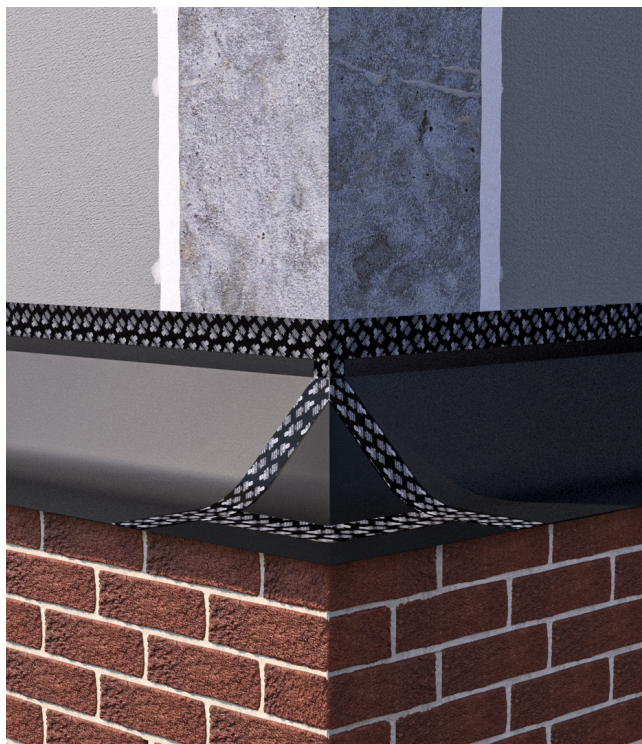


18

Set the membrane on top of the brickwork and then fold over to until the membrane sits flush in the corner, and runs adjacent to the brickwork. Seal with OBEX CORTEX 0244FR RapidTray DPC Sealing Tape. Apply pressure and roll with a silicone roller to ensure a strong bond.

**Please note:** pay attention to where silicone based ISM adhesive or board sealant runs behind the RapidTray. OBEX CORTEX 0210FR Paste Adhesive or a silicone primer may be needed to compliment the 0244FR RapidTray DPC Sealing Tape onto silicone based surfaces.





19

Seal the top edge of the RapidTray with OBEX CORTEX 0244FR RapidTray DPC Sealing Tape. Apply pressure and roll with a silicone roller to ensure a strong bond. The 0244FR RapidTray DPC Sealing Tape should cover the termination bar.

**Please note:** pay attention to where silicone based ISM adhesive or board sealant runs behind the RapidTray. OBEX CORTEX 0210FR Paste Adhesive or a silicone primer may be needed to compliment the 0244FR RapidTray DPC Sealing Tape onto silicone based surfaces.

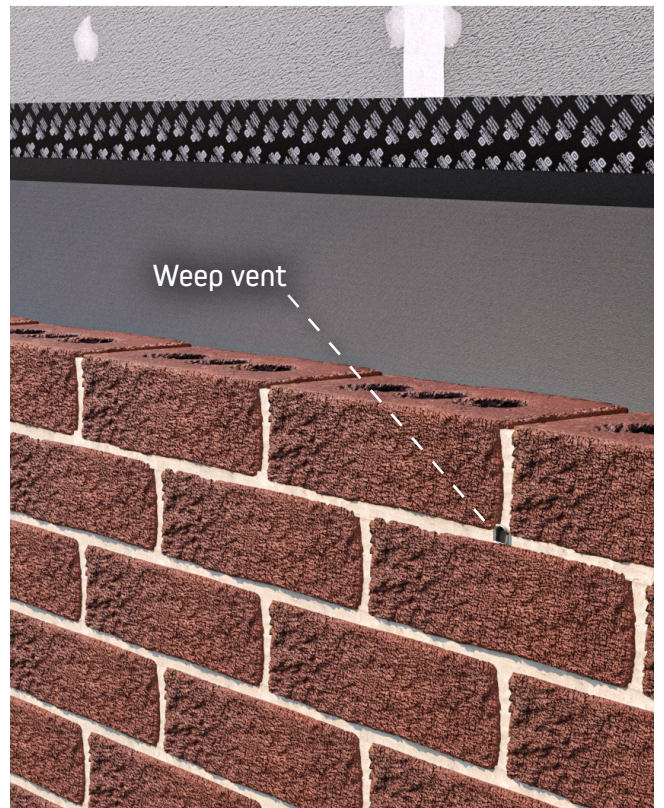
Please reference Cavity Tray application important notes 1e. & 1f.



20

Set the RapidTray on top of the brickwork, then place a few loose bricks on it to hold it in place. Trim the membrane in-line with the brickwork.

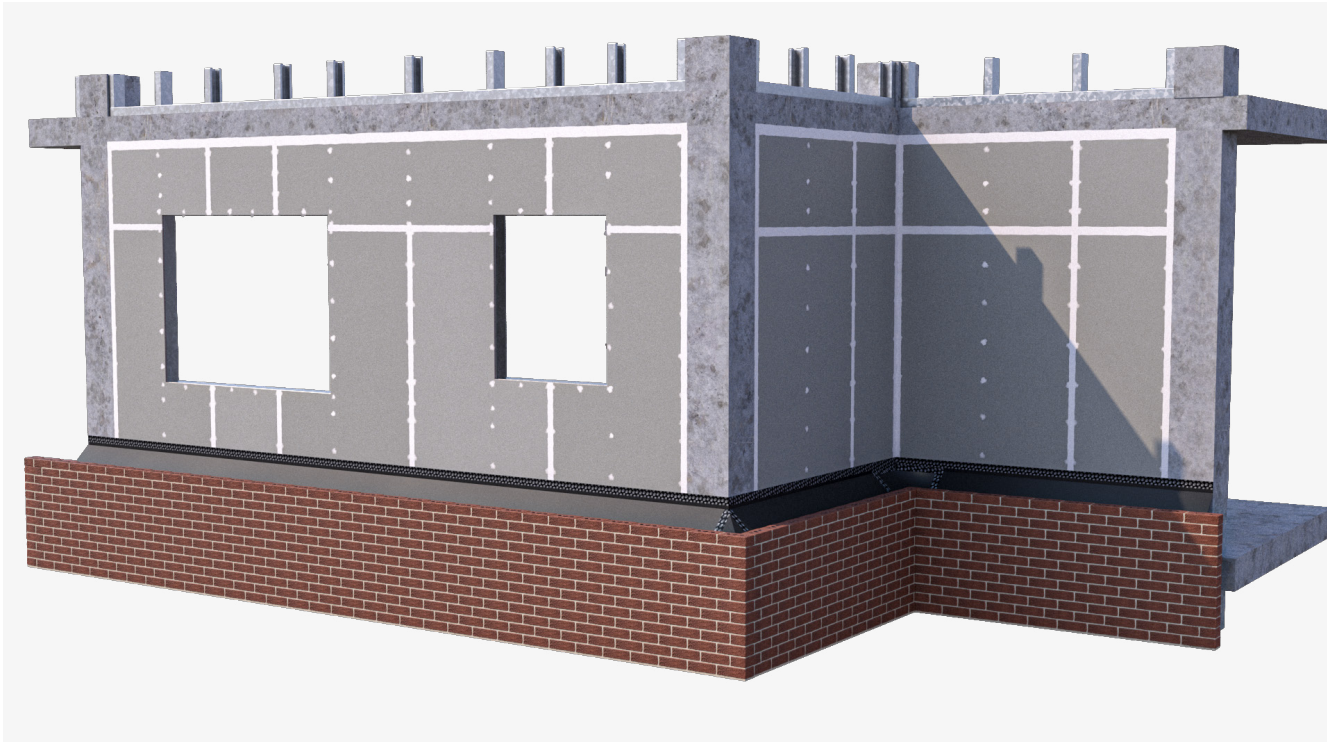




21

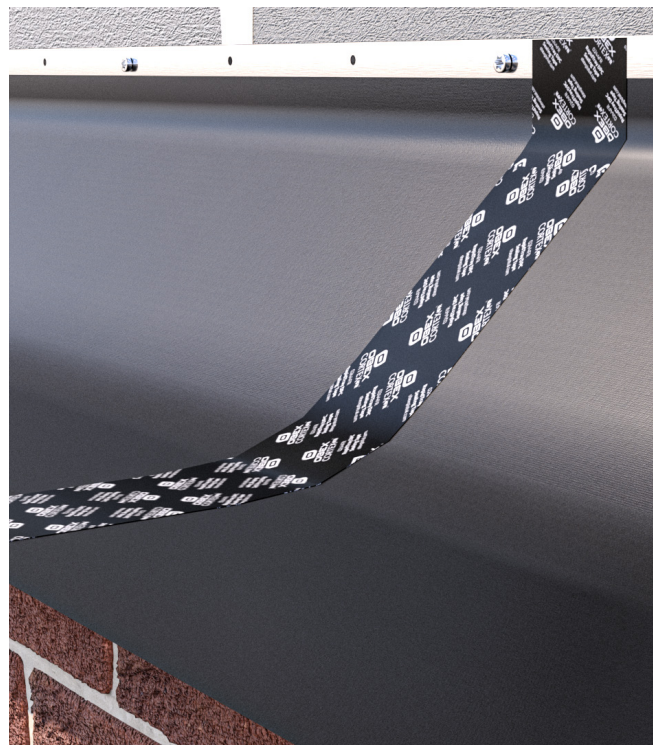
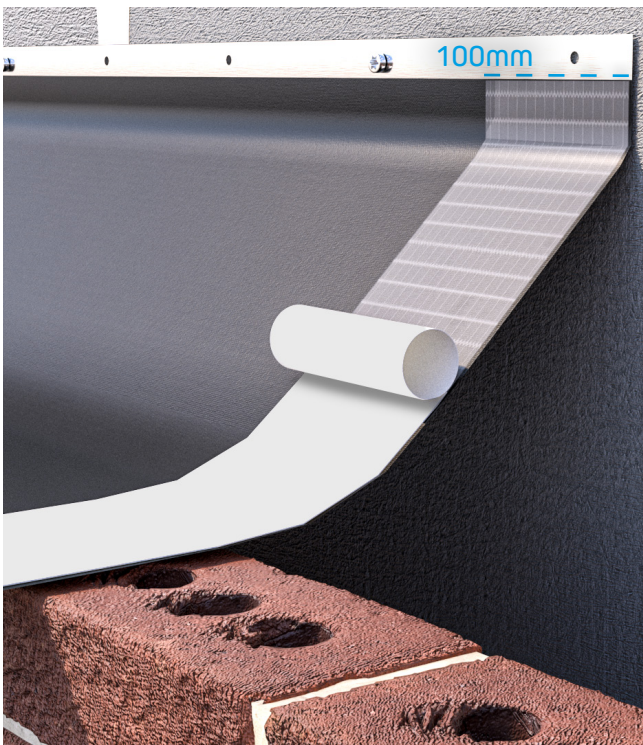
Let the membrane hang down the cavity then spread approx. 5mm of mortar on top of the brickwork. Place the membrane on top of the mortar, in-line with the brickwork face or no more than 5-6mm back from the brickwork face. Spread an additional approx. 5mm of mortar on top of the membrane then lay the next course of bricks on top, ensuring weep holes are inserted as required, or at 900mm spacings on cavity runs, or 450mm spacings above windows and doors. Lastly, continue to build the wall.





22

This is how the wall should look once the RapidTray has been installed.



23

RapidTray jointing detail. 100mm overlap bonded with 100mm 0245FR RapidTray DPC Double-Sided tape, and sealed with 75mm 0244FR RapidTray DPC Single-Sided Tape  
 Note: The 0245FR Double-Sided Tape creates a very strong, almost instant bond, so ensure everything is positioned correctly before bonding together.

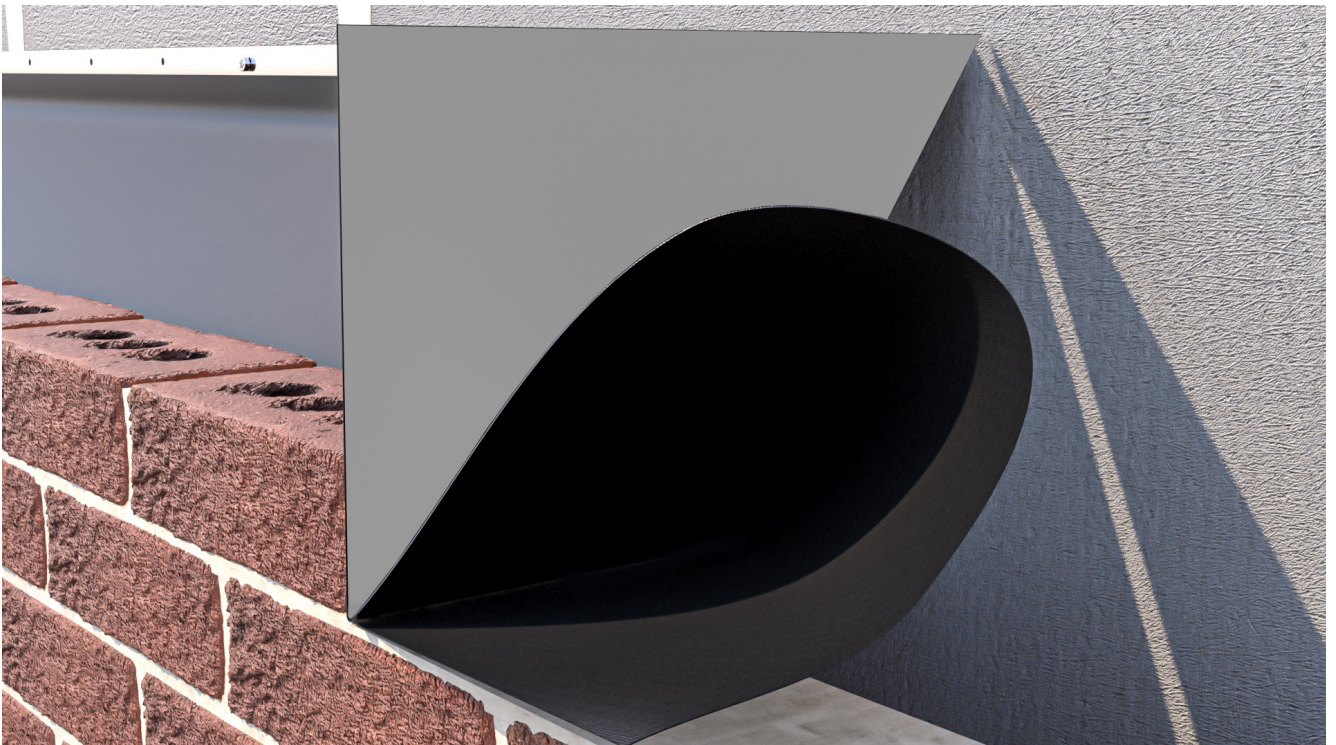


## Cavity Tray - Stop End



24

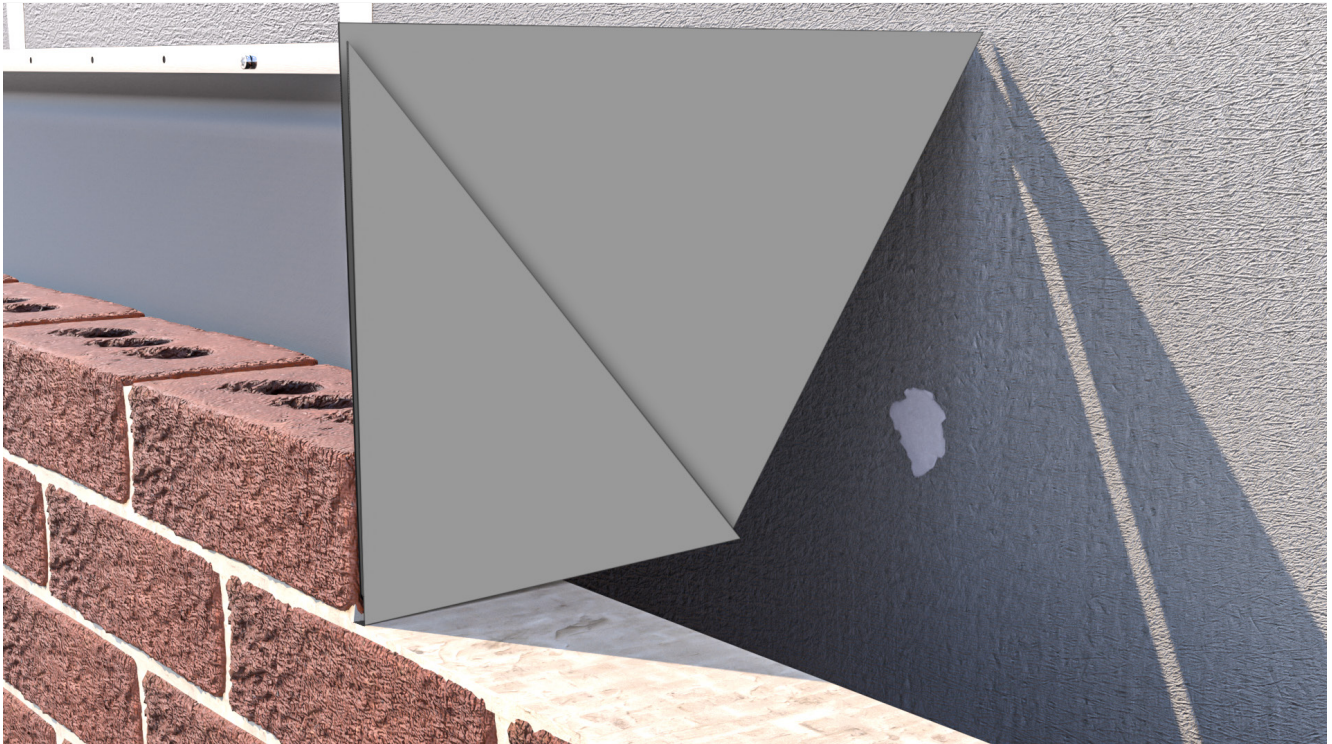
Install OBEX CORTEX RapidTray DPC as per previous instructions. To create a stop-end, start by cutting the membrane the cavity depth + 150mm past the last brick.



25

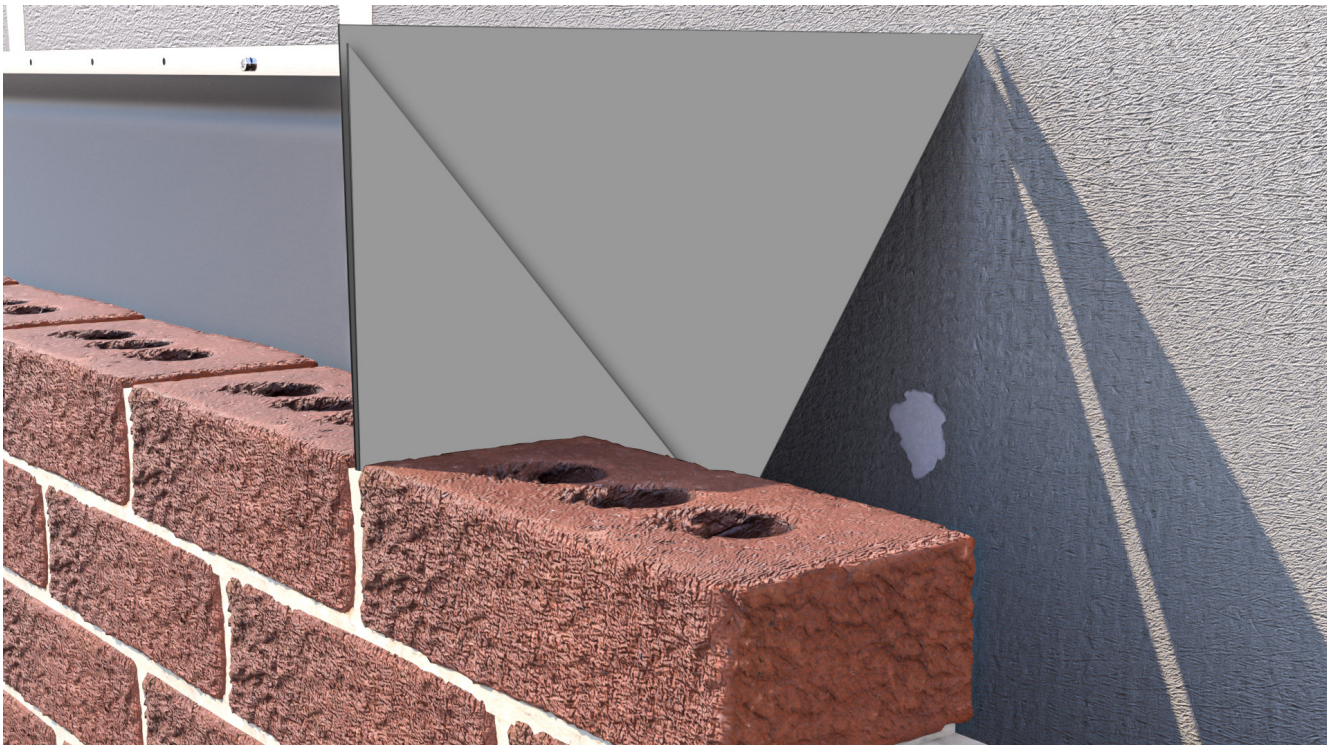
Pull the top of the membrane towards the brickwork as shown, creating a fold in the membrane.





26

Pull the folded section up, and align to the front edge of the stop end. Trim to the brickwork face as necessary.

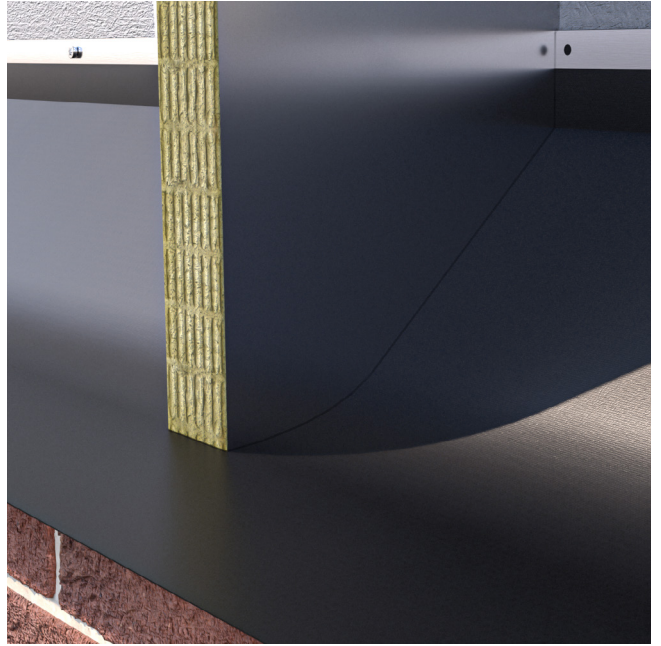
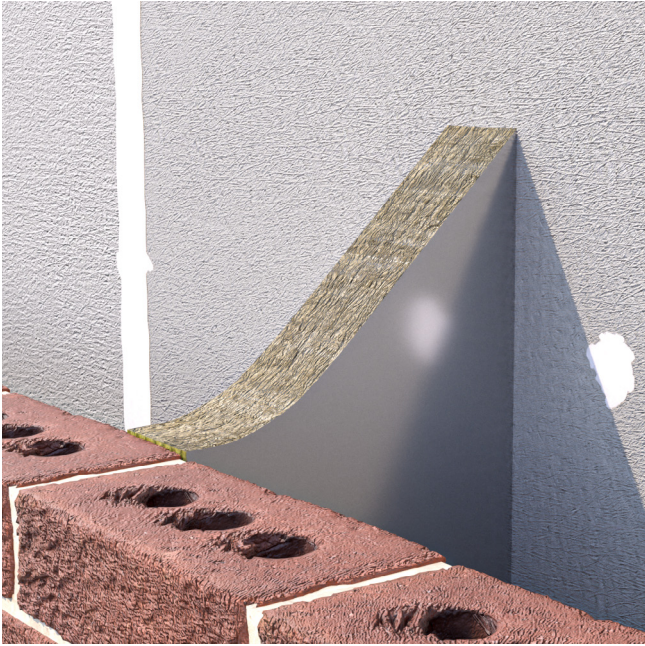


27

Continue the brickwork to hold the stop end in place.



## Cavity Barrier



28

To install Cavity Barriers, install the barrier to the height of the brickwork as per manufactures instructions. Then cut to the angle OBEX CORTEX RapidTray will be installed at. Install OBEX CORTEX RapidTray as per previous instructions. Finally continue the Cavity Barrier above, again cutting it flush to the angle of the cavity tray.

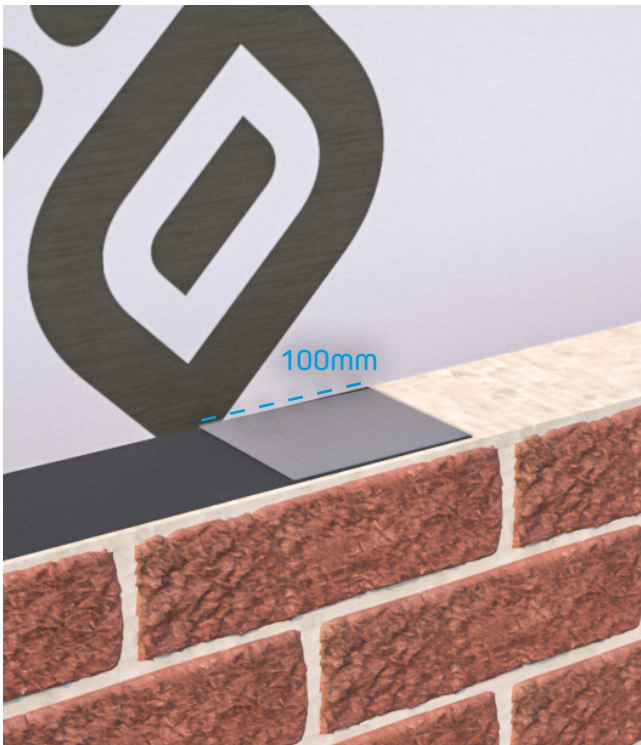


## DPC - Standard install



29

Build the brickwork to the desired height. Spread approx. 5mm of mortar on top of the brickwork. Place OBEX CORTEX RapidTray DPC on top of the mortar, setting it back a couple mm from the edges.



30

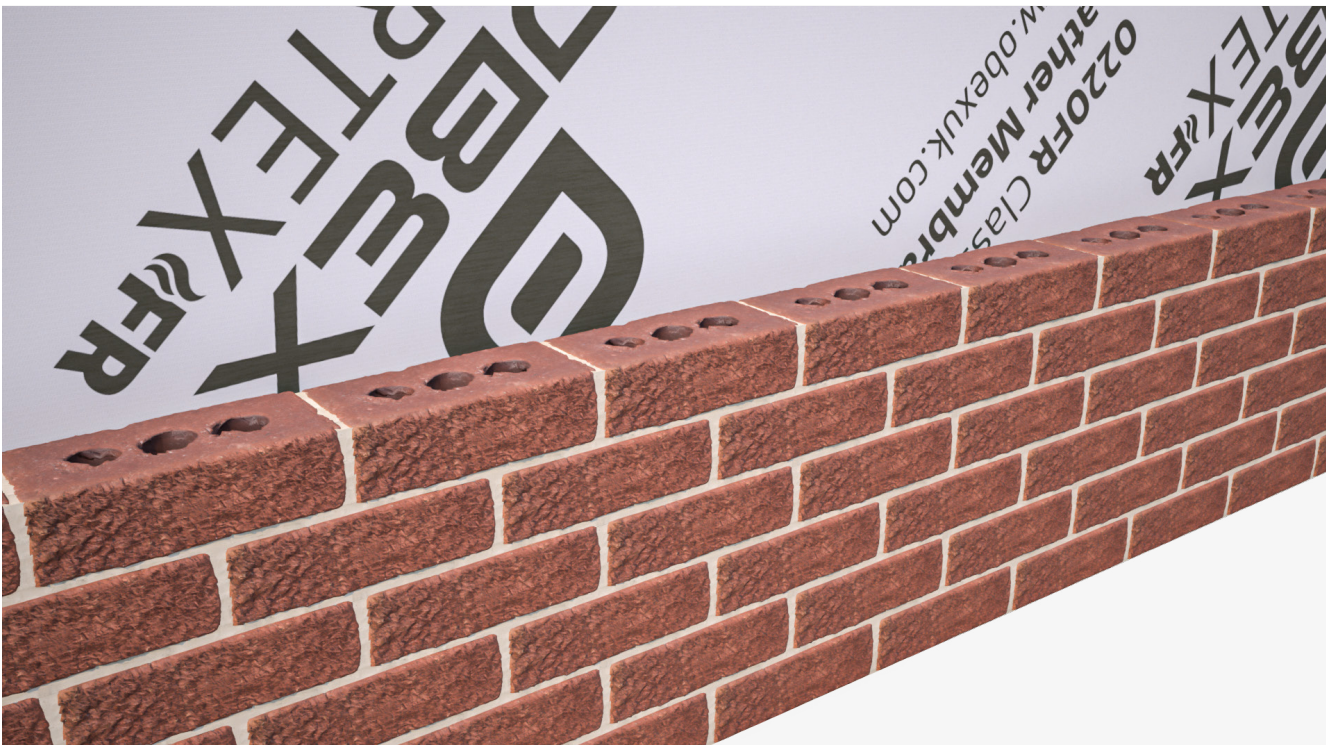
Joints overlapped by 100mm, and bonded with 100mm 0245FR RapidTray DPC Double-Sided Tape, and sealed with 75mm 0244FR RapidTray DPC Single-Sided Tape.





31

Spread an additional 5mm of mortar on top of the membrane.

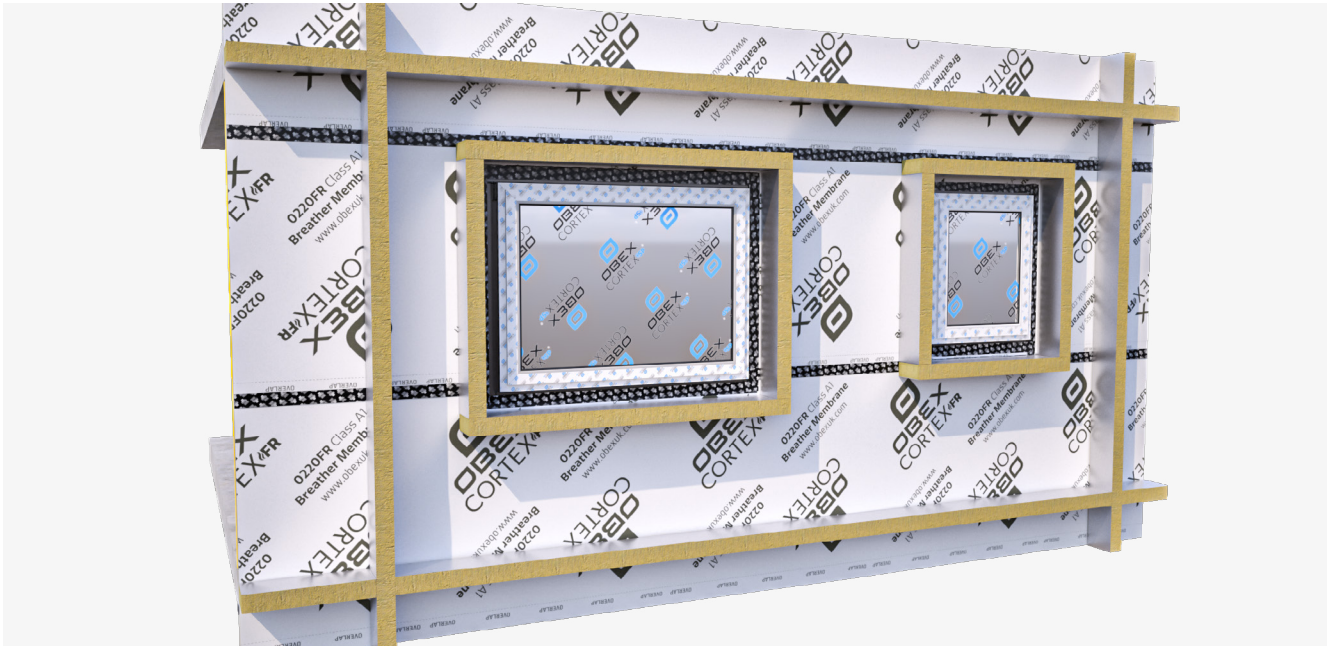


32

Lay the next course of bricks on top and continue to build the wall.



## DPC - Install on Cavity Barriers



33

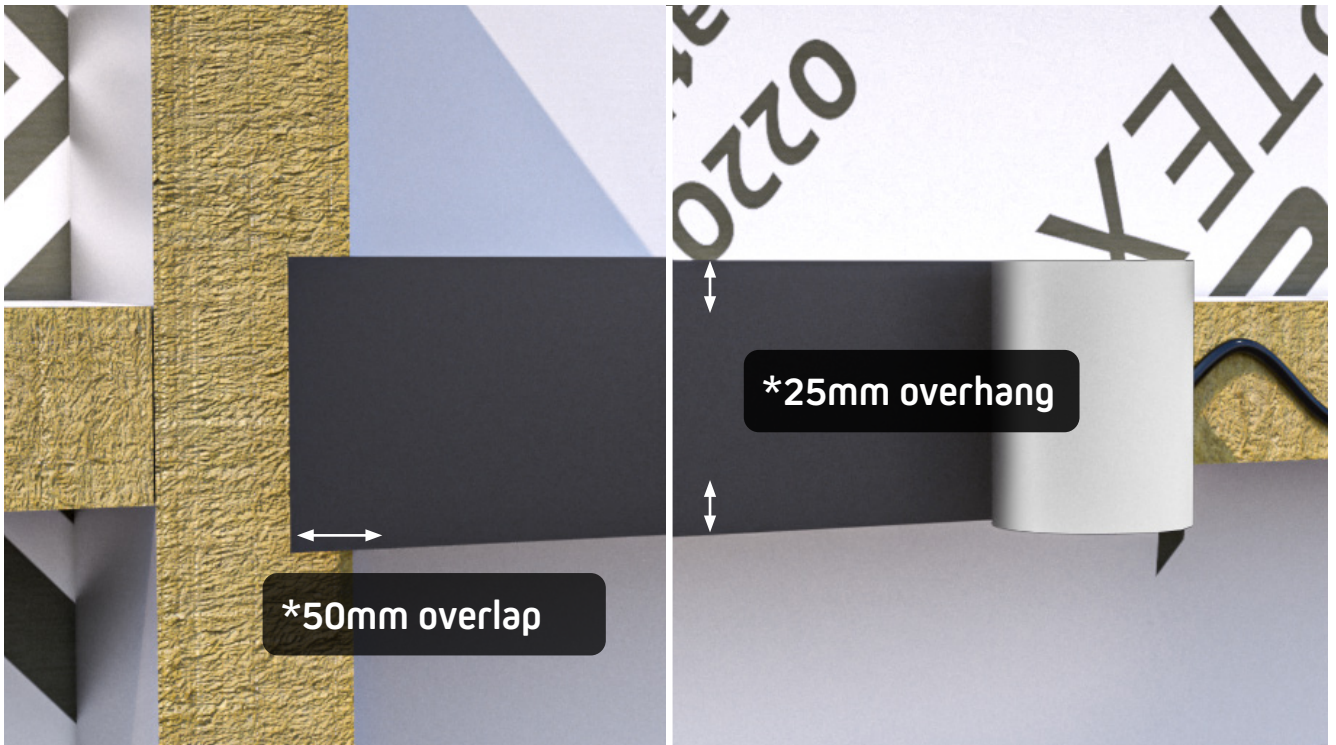
Install cavity barriers as per manufacturers instructions.



34

Apply a bead of OBEX CORTEX 0210FR paste adhesive to the outward face of the cavity barrier. Start with the horizontal cavity barriers.





35

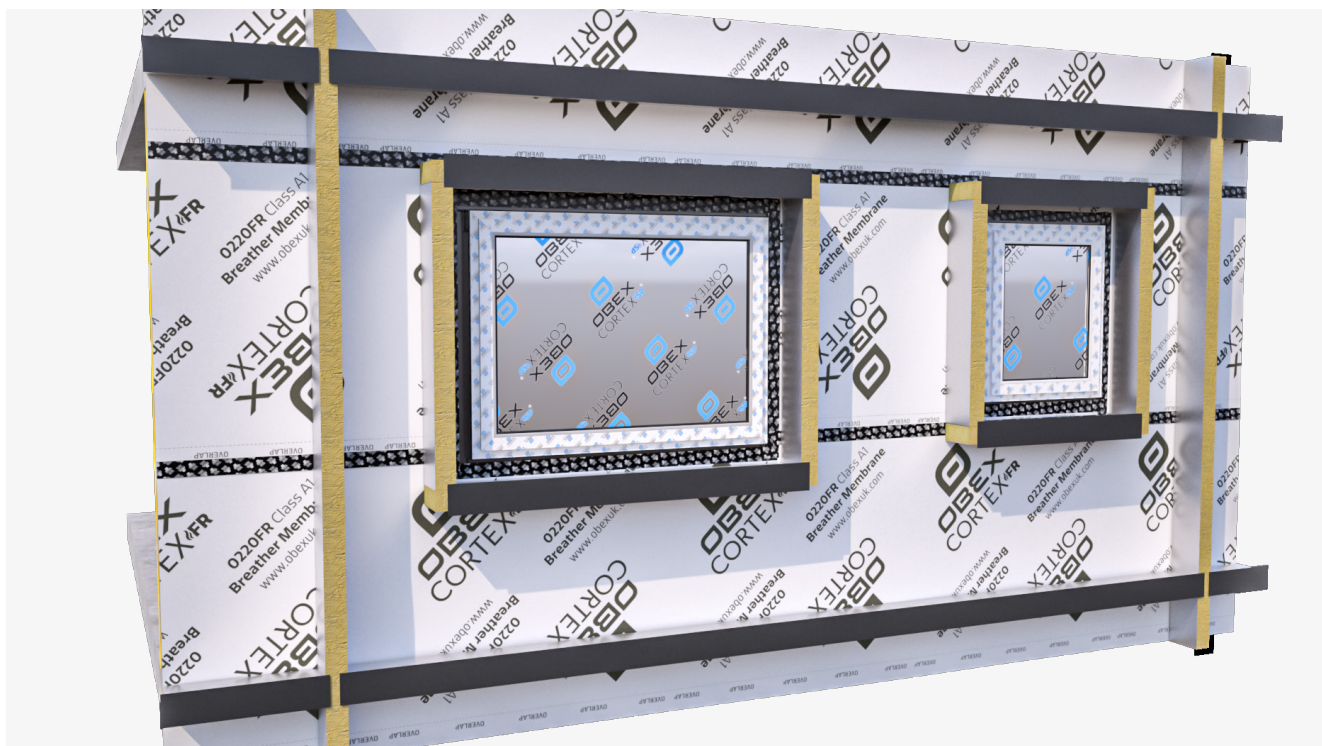
Roll out the OBEX CORTEX RapidTray DPC, ensuring the membrane overlaps the vertical cavity barrier by at least 50mm, also make sure the roll is wide enough to overhang the barrier by 25mm on both side.



36

Firmly roll over the membrane with a silicone roller, ensuring to cover the full width of the cavity barrier below.





37

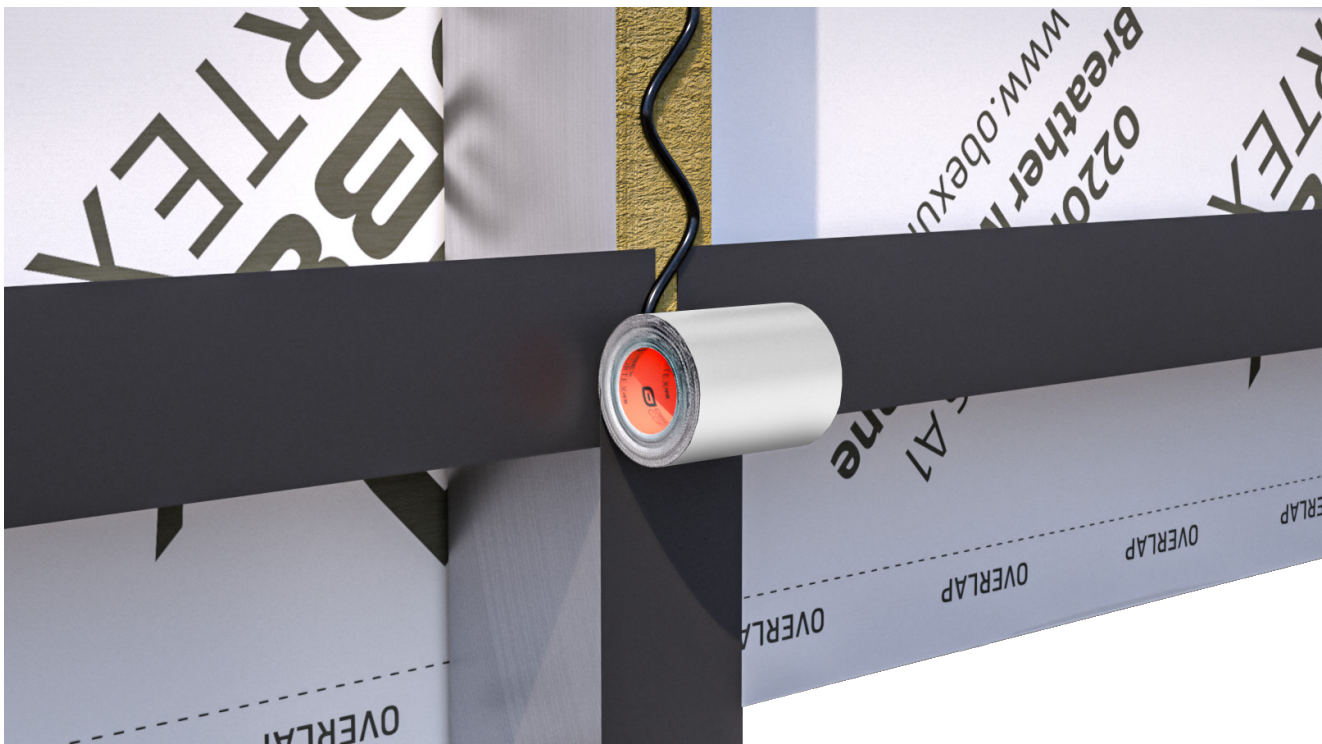
Complete all horizontal faces, and ensure that all membranes overlap the vertical cavity barriers by 50mm.



38

Next start on the verticals by applying OBEX CORTEX 0210FR as per previous instructions.





39

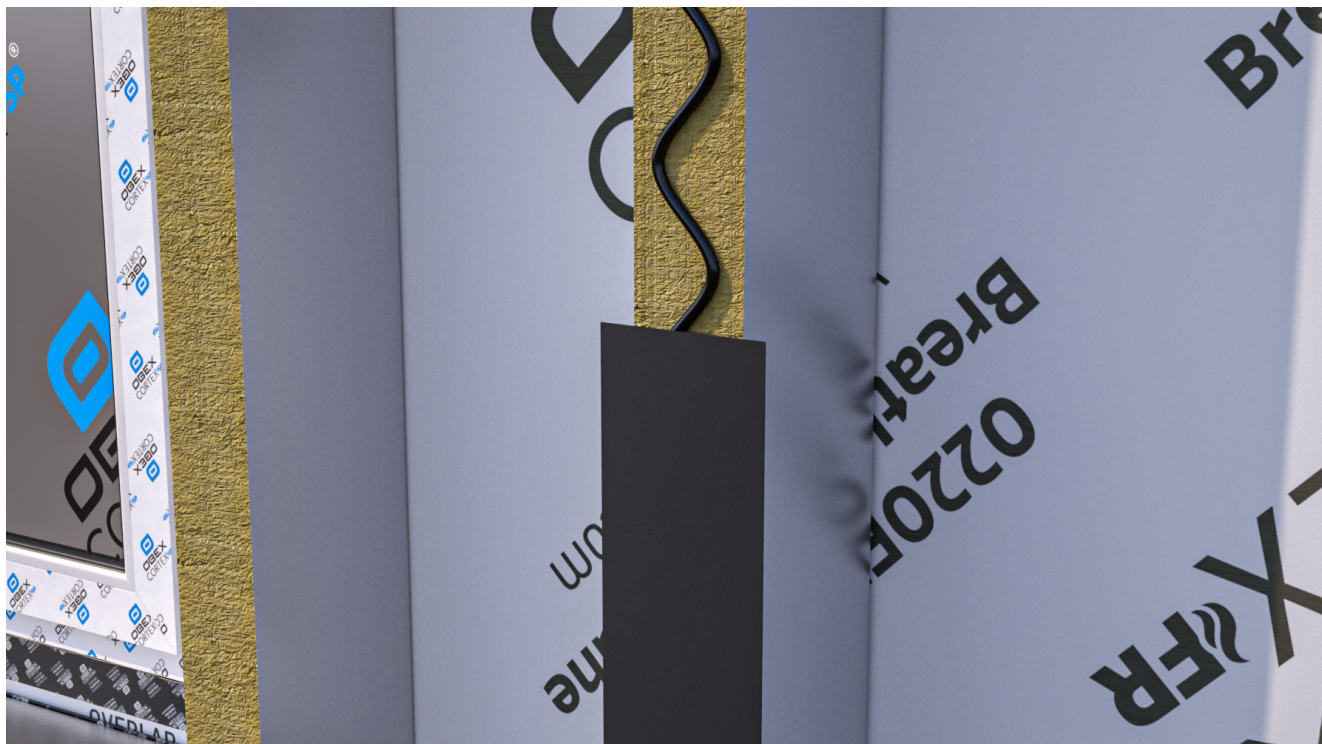
Roll out another length of OBEX CORTEX RapidTray DPC to cover the vertical cavity barrier, ensuring to overlap any horizontal sections.



40

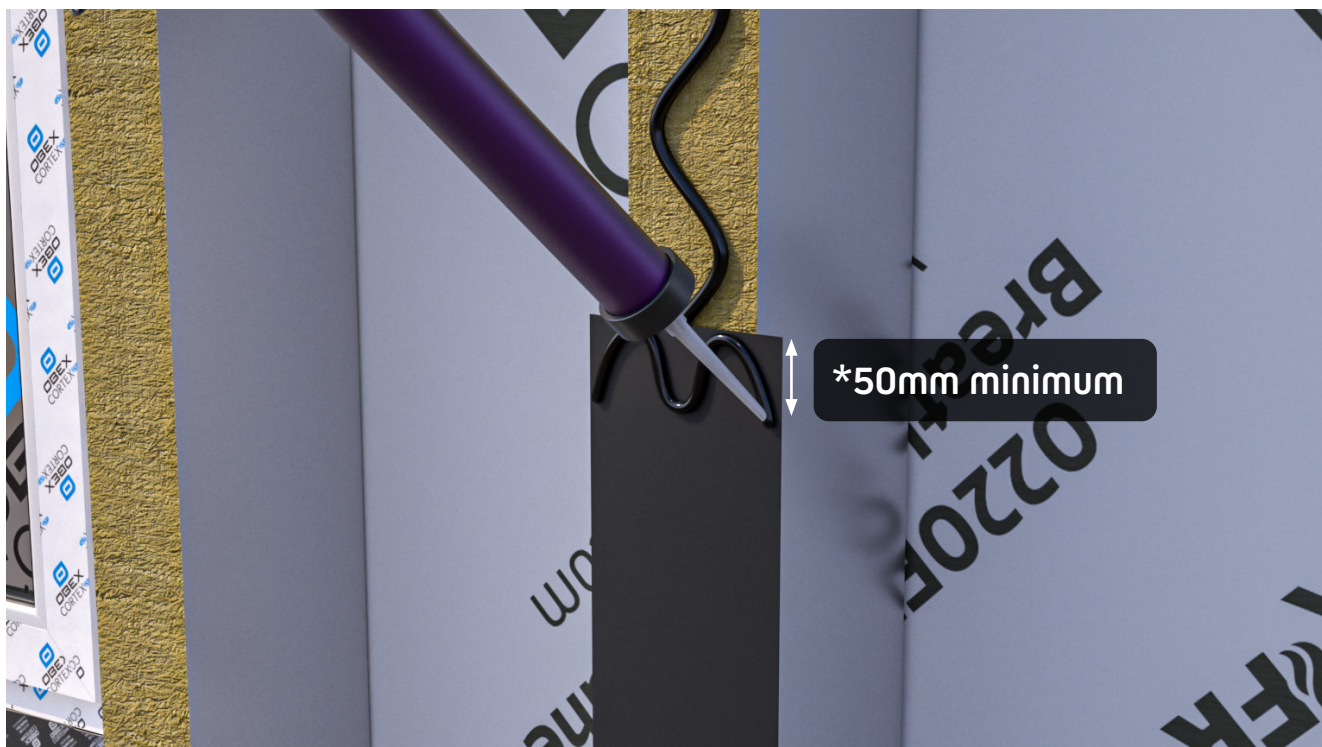
Firmly roll over the membrane with a silicone roller, ensuring to cover the full width of the cavity barrier below.





41

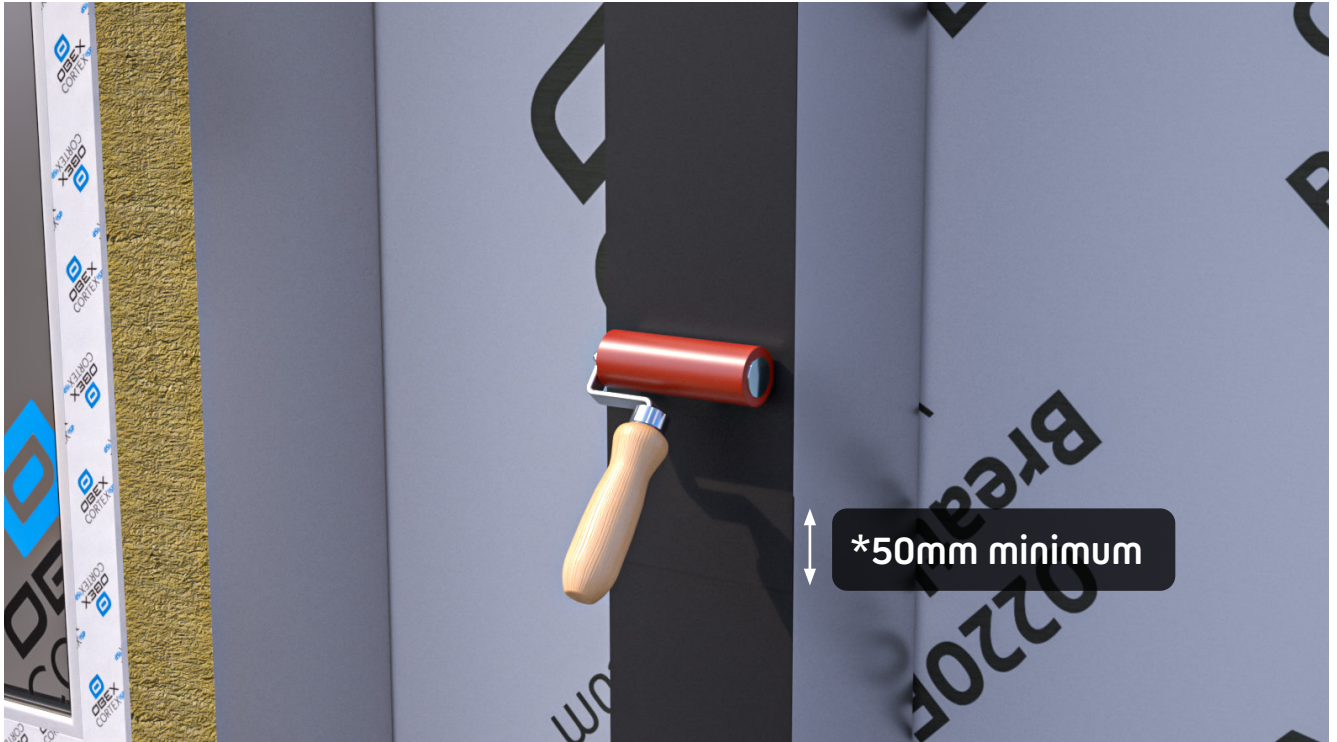
If covering a barrier longer than the remaining membrane on the roll, apply the paste and remaining membrane as per the previous steps then continue to the next step for overlapping guides.



42

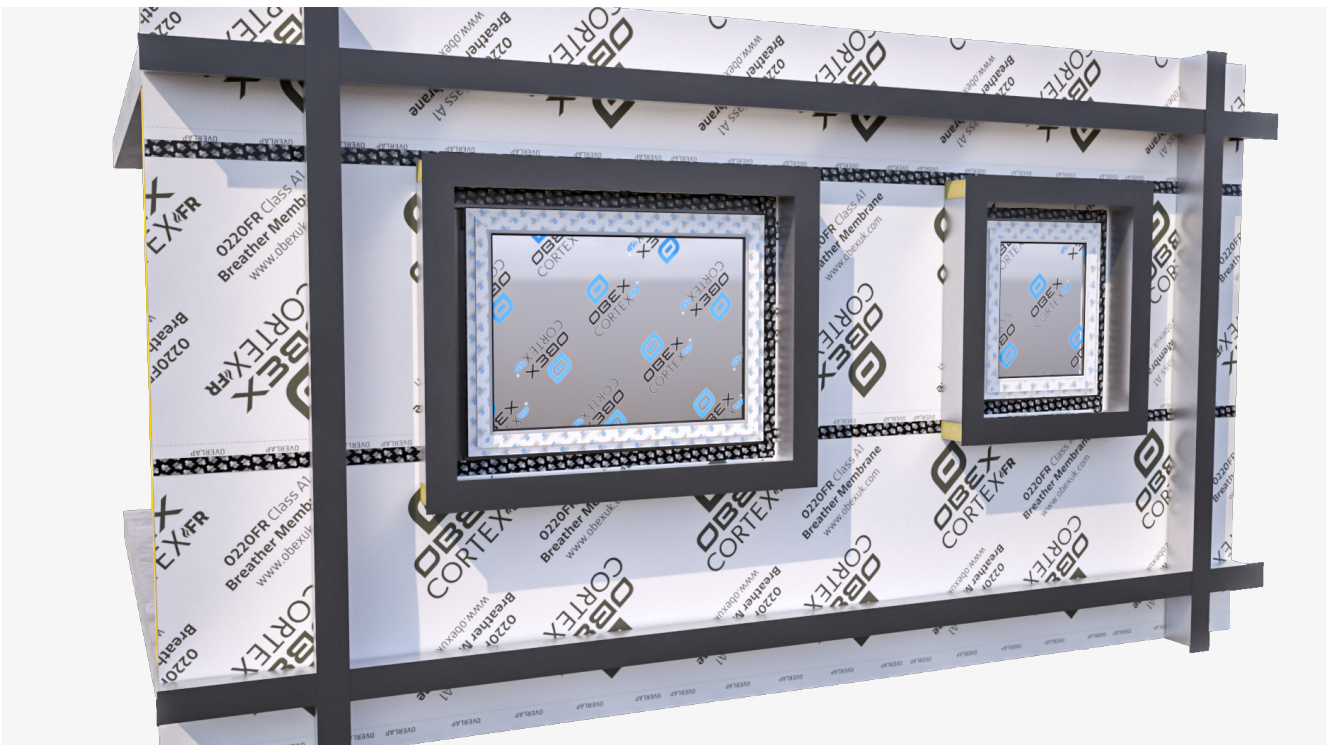
Apply paste to at least 50mm below the joint.





43

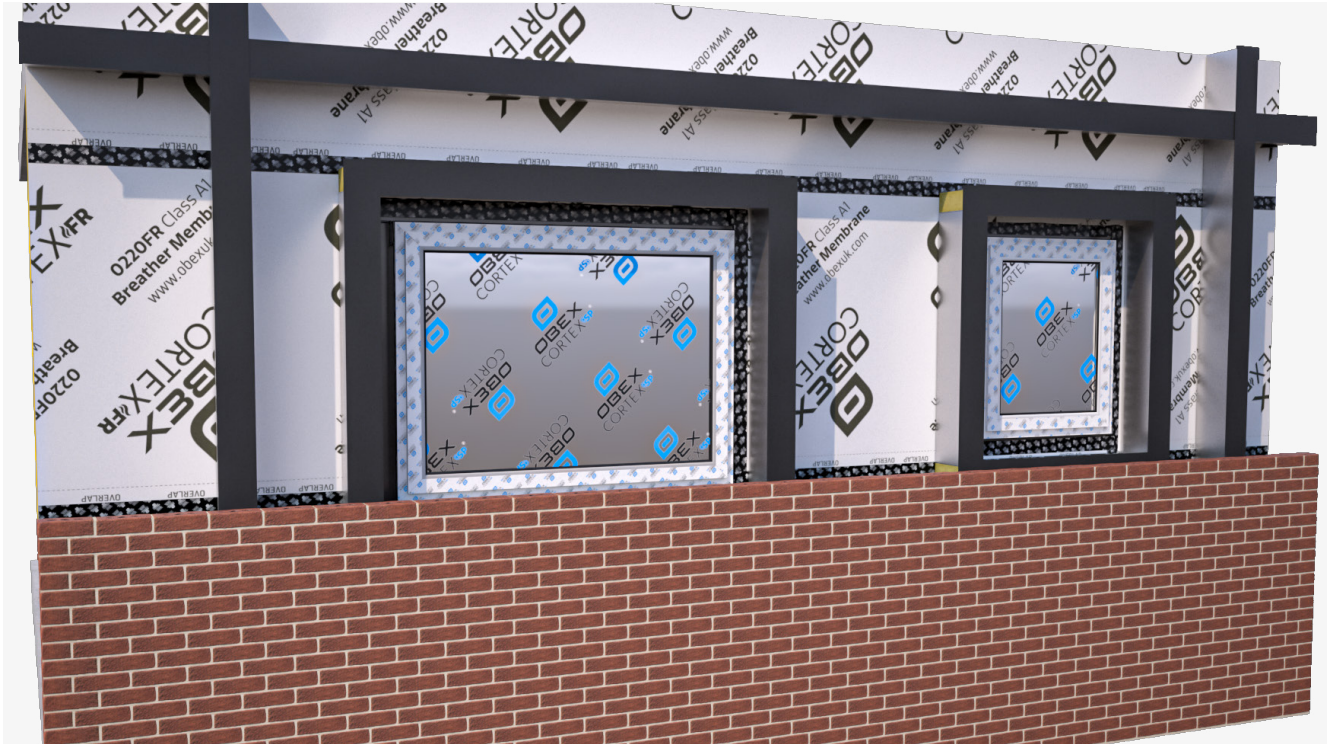
Roll out another length of OBEX CORTEX RapidTray DPC from the new roll, and overhang the lower membrane by 50mm. Apply firm pressure with a silicone roller to ensure maximum adhesion.



44

Continue to complete all vertical sections.





45

This is how the wall should look as the brickwork is built up.













UK  
OBEX Protection Ltd.  
+44 (0)1905 337 800  
[www.obexuk.com](http://www.obexuk.com)

AU  
OBEX Group Pty Ltd.  
+61 (0)248 691 932  
[www.obexau.com](http://www.obexau.com)

EU  
OBEX Protection France  
+33 (0)4 94 65 86 14  
[www.obexeu.com](http://www.obexeu.com)